



## 22 MEDWAY STREET

SW1P 2BA

£2,500

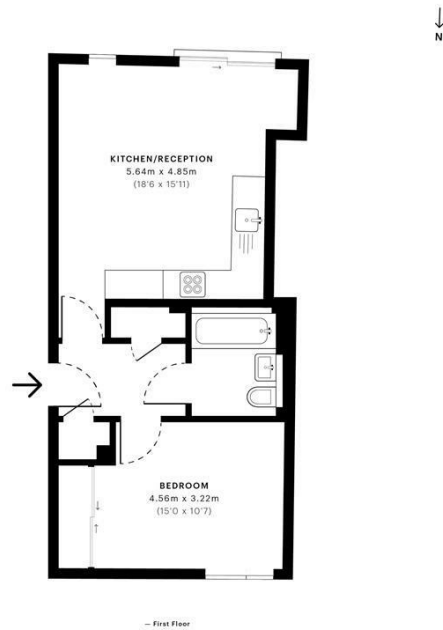
A well presented, one bedroom situated on the first floor of a portered new development in Westminster. The property comprises of an open plan kitchen living area, double bedroom with fitted wardrobes and a modern tiled bathroom.

The local area is extremely well connected with Victoria Railway Station providing national mainline services including the Gatwick Express, and Underground stations at Victoria, St James Park, Westminster and Pimlico all within convenient distances

**Hemmingfords**

Medway Street, SW1P  
 CAPTURE DATE: 18/11/2022 LASER SCAN POINTS: 69346,650

GROSS INTERNAL AREA  
 46.08 sqm / 496.00 sqft



46.08 sqm / 496.00 sqft

43.44 sqm / 463.58 sqft

0.00 sqm / 0.00 sqft

0.27 sqm / 2.92 sqft

spec Verified

RICS Certified Property Measurement

SPCC ID: 543792525475490564146236



Energy Efficiency Rating		
	Current	Potential
Very energy efficient - lower running costs		
(92 plus) <b>A</b>		
(81-91) <b>B</b>	<b>82</b>	<b>83</b>
(69-80) <b>C</b>		
(55-68) <b>D</b>		
(39-54) <b>E</b>		
(21-38) <b>F</b>		
(1-20) <b>G</b>		
Not energy efficient - higher running costs		
<b>England &amp; Wales</b>	EU Directive 2002/91/EC	

Agents Note: Whilst every care has been taken to prepare these particulars, they are for guidance purposes only. All measurements are approximate and are for general guidance purposes only and whilst every care has been taken to ensure their accuracy, they should not be relied upon and potential buyers/tenants are advised to recheck the measurements

Hemmingfords Lettings & Sales  
 Second Floor  
 34 Upper Street  
 London  
 N1 0PN

020 3890 7470  
 info@hemmingfords.co.uk  
 www.hemmingfords.co.uk

**Hemmingfords**