



COBALT 33 BRIDGEWATER SQUARE

LONDON, EC2Y 8AH

£3,250

AVAILABLE IN SEPTEMBER A charming two double bedroom, two bathroom, fourth floor apartment situated in Bridgewater Square, right in the heart of the City.

The bright reception is generously proportioned with the bonus of a Juliet balcony with an attractive and open aspect.

The master bedroom features a generous en-suite bathroom, Juliet balcony and fitted wardrobes. The second bedroom, further bathroom, plus a separate kitchen complete the property.

Hemmingfords

Cobalt Building, EC2Y

Approximate Gross Internal Area
675 sq ft / 62.68 sq m



Fourth Floor

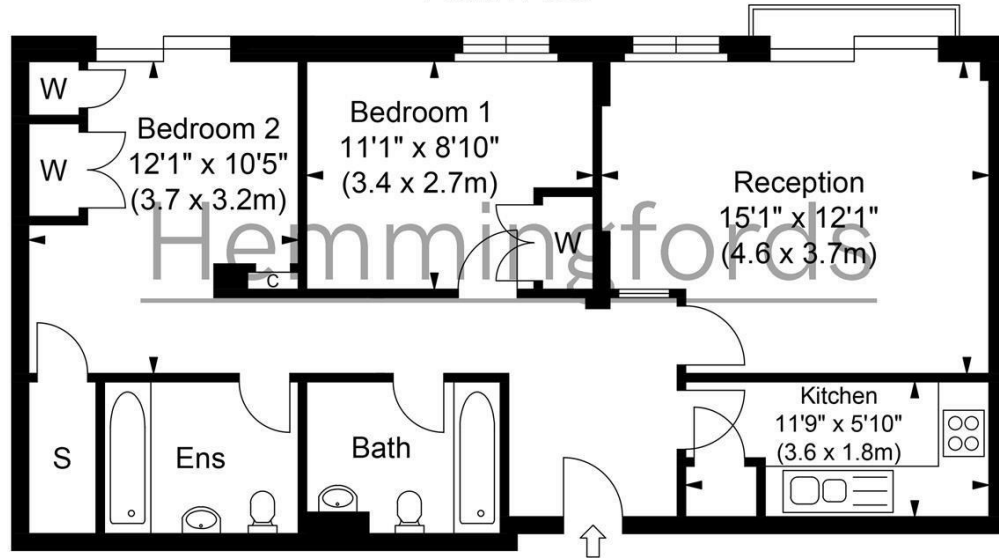


ILLUSTRATION FOR IDENTIFICATION PURPOSES ONLY

ALL MEASUREMENTS ARE MAXIMUM, AND INCLUDE WINDOW BAYS AND WARDROBES WHERE APPLICABLE
THIS PLAN MUST NOT BE REPRODUCED BY ANY OTHER PERSON WITHOUT PERMISSION



Energy Efficiency Rating		
	Current	Potential
Very energy efficient - lower running costs		
(92 plus) A		
(81-91) B		
(69-80) C		
(55-68) D		
(39-54) E		
(21-38) F		
(1-20) G		
Not energy efficient - higher running costs		
England & Wales	77	82
	EU Directive 2002/91/EC	

Agents Note: Whilst every care has been taken to prepare these particulars, they are for guidance purposes only. All measurements are approximate and are for general guidance purposes only and whilst every care has been taken to ensure their accuracy, they should not be relied upon and potential buyers/tenants are advised to recheck the measurements

Hemmingfords Lettings & Sales
Second Floor
34 Upper Street
London
N1 0PN

020 3890 7470
info@hemmingfords.co.uk
www.hemmingfords.co.uk

Hemmingfords