

Hemmingfords



2 Copperfield Mews London

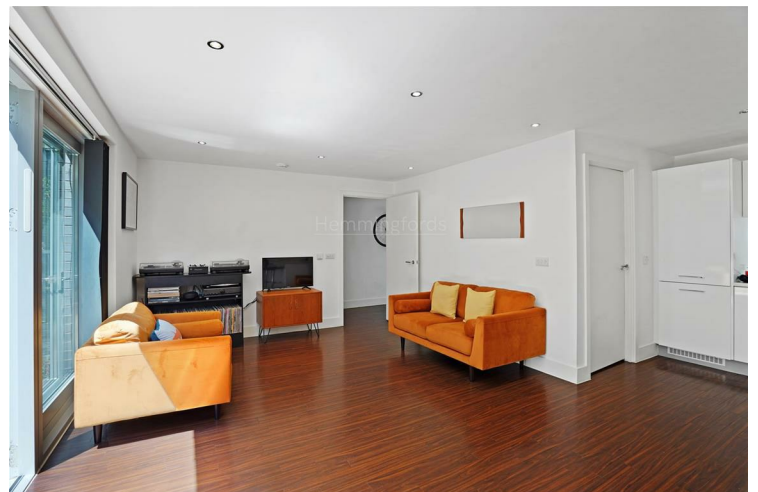
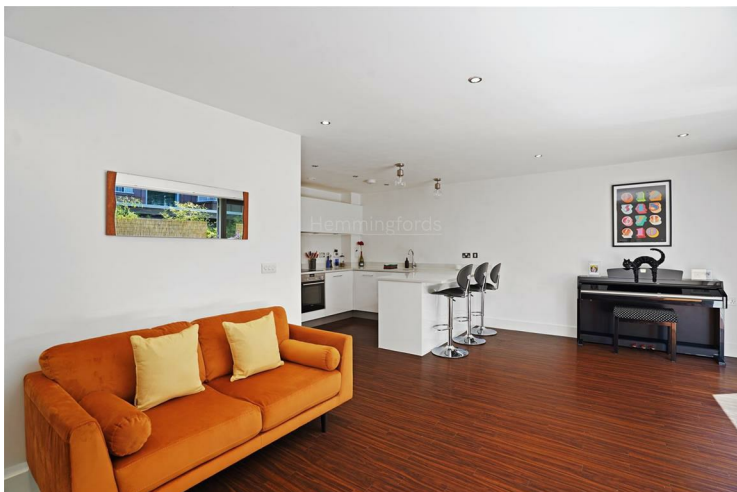
£925,000
FREEHOLD

Experience the charm of this immaculate three-bedroom house, nestled within a gated mews development perfectly situated between the vibrant neighbourhoods of Shoreditch and Bethnal Green.

Ground Floor

The ground floor boasts a substantial open-plan lounge and kitchen, featuring large double doors that open out onto a private patio garden, perfect for outdoor entertaining. The modern kitchen offers ample storage and includes access to a convenient utility room. Additionally, the ground floor includes a cloakroom accessible from the hallway.

First Floor



Approximate Area = 93.7 sq m / 1008 sq ft
 Including Limited Use Area (1.4 sq m / 15 sq ft)
 For identification only. Not to scale.
 © Fourwalls



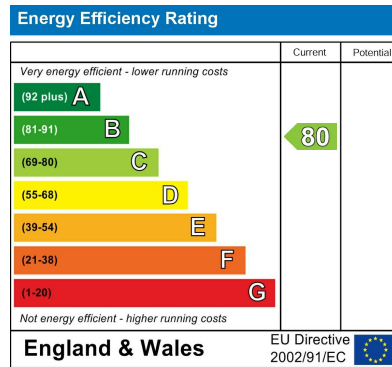
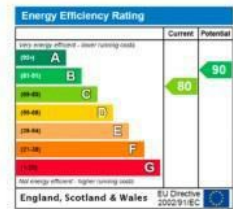
Ground Floor



First Floor

☐ = Reduced head height below 1.5m

Surveyed and drawn in accordance with the International Property Measurement Standards (PMS 2: Residential)
 fourwalls-group.com 295220



Agents Note: Whilst every care has been taken to prepare these particulars, they are for guidance purposes only. All measurements are approximate and are for general guidance purposes only and whilst every care has been taken to ensure their accuracy, they should not be relied upon and potential buyers/tenants are advised to recheck the measurements

Hemmingfords Sales & Lettings
 Second Floor
 34 Upper Street
 London
 N1 0PN

02038907470
 info@hemmingfords.co.uk
 www.hemmingfords.co.uk

Hemmingfords