



## 285 FELLOWS COURT WEYMOUTH TERRACE

E2 8LL

£500,000  
LEASEHOLD

A newly refurbished, stunning, bright and spacious three bedroom split level maisonette situated over the second and third floors (Top) of this purpose built building, with the property having been completed with bespoke fixtures and fittings throughout.

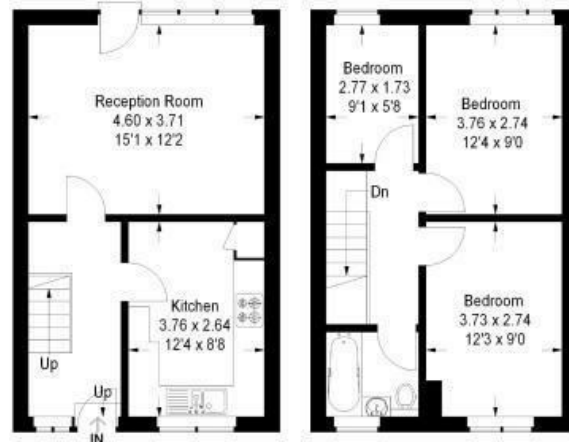
The property comprises of three bedrooms, separate fully integrated kitchen, inviting living room with a Juliet balcony and a modern tiled bathroom

Fellows Court on Weymouth Terrace places you in a vibrant neighbourhood with a plethora of amenities and attractions. Enjoy leisurely strolls in the nearby parks, explore eclectic boutiques, or diverse local eateries. For the daily essentials, supermarkets and shops are just a stone's throw away. Transportation is a breeze, with convenient access to nearby bus stops and train stations. The property's location ensures easy connectivity to the city and beyond, making daily commuting a seamless experience.

**Hemmingfords**

## Fellows Court, E2

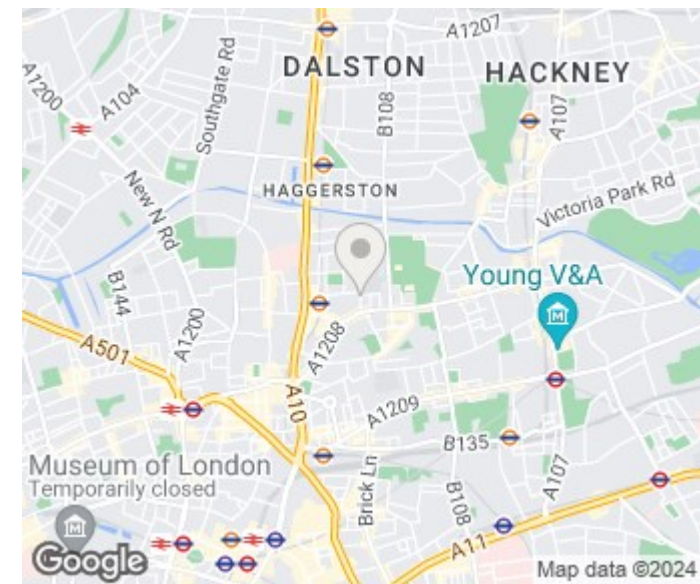
Approximate Gross Internal Area  
 Second Floor = 35.5 sq m / 382 sq ft  
 Upper Floor = 35.2 sq m / 379 sq ft  
 Total = 70.7 sq m / 761 sq ft



Second Floor

Upper Floor

This plan is for layout guidance only. Not drawn to scale unless stated. Windows and door openings are approximate. Whilst every care is taken in the preparation of this plan, please check all dimensions, shapes and compass bearings before making any decisions reliant upon them. (ID179513)



Energy Efficiency Rating		
	Current	Potential
Very energy efficient - lower running costs		
(92 plus) <b>A</b>		
(81-91) <b>B</b>		
(69-80) <b>C</b>	72	79
(55-68) <b>D</b>		
(39-54) <b>E</b>		
(21-38) <b>F</b>		
(1-20) <b>G</b>		
Not energy efficient - higher running costs		
<b>England &amp; Wales</b>	EU Directive 2002/91/EC	

Agents Note: Whilst every care has been taken to prepare these particulars, they are for guidance purposes only. All measurements are approximate and are for general guidance purposes only and whilst every care has been taken to ensure their accuracy, they should not be relied upon and potential buyers/tenants are advised to recheck the measurements

Hemmingfords Lettings & Sales  
 Second Floor  
 34 Upper Street  
 London  
 N1 0PN

020 3890 7470  
 info@hemmingfords.co.uk  
 www.hemmingfords.co.uk

**Hemmingfords**