



## 100 St. Margarets Road

Plympton, Plymouth, PL7 4SB

£480,000



Well-presented extended Stanbury-built detached house sitting on a generous corner plot, offering a double driveway & double garage, with lovely gardens providing all-day sunshine. The accommodation consists of a kitchen/breakfast room & open plan lounge/diner, conservatory & downstairs cloakroom with 4 bedrooms & family bathroom. In the garden there is a home office with power, lighting and USB connection points.



100 ST MARGARETS ROAD, PLYMPTON, PLYMOUTH PL7 4SB

ACCOMMODATION

Wood-effect composite door opening into the entrance porch.

ENTRANCE PORCH

uPVC double-glazed door with obscured glass panels opening into the entrance hall.

ENTRANCE HALL 14'4" x 12'9" (4.392 x 3.897)

A sizeable area with a staircase ascending to the first floor landing and 2 storage cupboards beneath. Open plan access into the kitchen/breakfast room. Doors opening into the lounge/diner, downstairs cloakroom and bedroom four/office. uPVC double-glazed window to the front elevation. Access hatch to boarded, insulated loft space with pull-down ladder.

BEDROOM FOUR/OFFICE 10'5" x 9'1" (3.189 x 2.782)

uPVC triple-glazed window to the side elevation. Range of built-in wardrobes. Dropped accent ceiling with feature lighting and spotlights.

DOWNSTAIRS CLOAKROOM 4'1" x 4'1" (1.263 x 1.266)

Obscured double-glazed uPVC window to the side elevation. Fully-tiled walls and floor. Aquaboarded ceiling panel. Low-level wc and pedestal wash handbasin with mixer tap. Wall-mounted radiator.

LOUNGE 14'1" x 12'7" (4.308 x 3.856)

Triple-glazed uPVC window to the front elevation. Feature fireplace with a marble surround. Open plan access into the dining room.

DINING ROOM 11'1" x 12'6" (3.379 x 3.812)

Feature uPVC double-glazed portal-style window with decorative stained-glass to the side elevation. Set of uPVC triple-glazed sliding doors opening into the conservatory.

CONSERVATORY 13'3" x 12'8" (4.056 x 3.886)

A large room, constructed beneath an insulated roof, with uPVC double-glazed windows to 3 elevations and uPVC double-glazed doors to the side elevation opening to an area of decking. Views over the garden.

KITCHEN/BREAKFAST ROOM 15'3" x 11'7" (4.657 x 3.547)

Fitted with a matching range of base and wall-mounted units incorporating a wood square-edged worktop and an inset Lamona induction hob with a Bosch extraction hood over, an inset one-&a-half composite sink with mixer tap and an attractive tiled splash-back. Integrated Bosch oven and grill. Space and plumbing for a washing machine, dishwasher, tumble dryer and a large free-standing fridge/freezer. Wood peninsula with space for seating beneath. Tiled flooring. Ceiling spotlighting. Contemporary vertical radiator. 2 triple-glazed uPVC windows to the rear elevation overlooking the garden. uPVC double-glazed door, with inset obscured glass panel, opening to the side porch.

SIDE PORCH 11'1" x 3'10" (3.393 x 1.182)

uPVC double-glazed window to the rear elevation. Wall-mounted electric heater. Double-glazed sliding doors providing access to the rear garden.

FIRST FLOOR LANDING

Doors providing access to the first floor accommodation. Triple-glazed uPVC window to the side elevation.

BEDROOM ONE 11'8" x 14'0" (3.576 x 4.276)

Triple-glazed uPVC window to the front elevation.

BEDROOM TWO 11'8" x 12'6" (3.572 x 3.827)

Triple-glazed uPVC window to the rear elevation.

BEDROOM THREE 9'11" x 6'11" (3.030 x 2.129)

Triple-glazed uPVC window to the front elevation.

BATHROOM 7'9" x 6'9" (2.387 x 2.076)

2 obscured double-glazed windows to the side elevation. Panelled bath and low-level wc. Double shower cubicle with mains-fed waterfall shower head and additional hand-held attachment, vanity wash handbasin with mixer tap and storage below. Chrome heated towel rail. Fully-tiled walls and floor. Ceiling spotlighting.

DOUBLE GARAGE

uPVC double-glazed courtesy door to the side providing access to the garden.

OUTSIDE

The property is approached via a tiled pathway leading to the front door with bordering areas of lawn and a beautiful selection of palm trees. A double driveway leads to the double garage with external EV charging points and a Mitsubishi electric Ecodan heat pump system. A side gate provides access to the rear garden via a tiled pathway, leading to a covered deck area with outside electric points. Adjacent to the conservatory there is a raised decking area bordered by attractive glass balustrading providing a beautiful al fresco entertainment space and with an outside water tap, electricity and a heated swimming pool. The garden is a real feature of the property - extremely attractive and being south and westerly-facing it is a sun trap. It is fully-enclosed with feather-boarded fence panels, including raised planters with beautiful mature borders, a selection of fruit trees a chicken coop and run. To the very rear of the garden there is a home office.

HOME OFFICE 11'2" x 13'2" (3.406 x 4.021)

Accessed via anthracite grey double-glazed bi-folding doors. Power and lighting. Space for a sizeable office desk or bedroom furniture. Attractive drop ceiling with feature lighting.

COUNCIL TAX

Plymouth City Council  
Council Tax Band: E

SERVICES

The property is connected to all the mains services: gas, electricity, water and drainage.

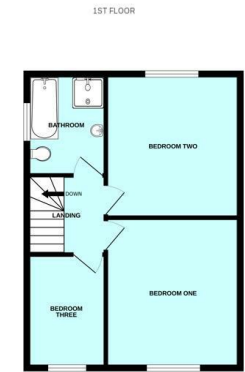
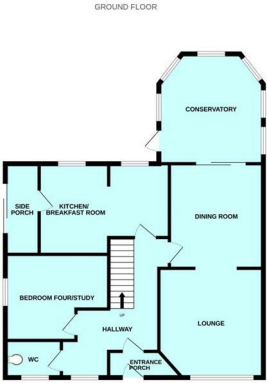
WHAT3WORDS

///mats.modest.zealous

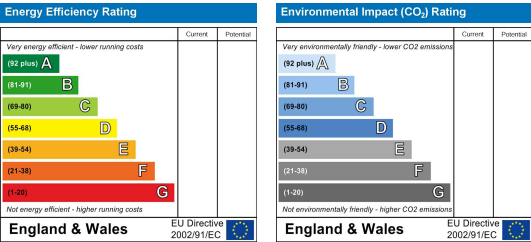
Area Map



Floor Plans



Energy Efficiency Graph



These particulars, whilst believed to be accurate are set out as a general outline only for guidance and do not constitute any part of an offer or contract. Intending purchasers should not rely on them as statements of representation of fact, but must satisfy themselves by inspection or otherwise as to their accuracy. No person in this firms employment has the authority to make or give any representation or warranty in respect of the property.