



35 Auctioneers Close

Plympton, Plymouth, PL7 1AH

£280,000



Situated in a quiet cul-de-sac, conveniently located for the local playing fields, shops & schools, this well-presented family home offers bright, spacious accommodation including an entrance hall, lounge, kitchen/diner & downstairs wc whilst upstairs there are 3 bedrooms & a 4-piece family bathroom. Outside, there is a garage & driveway with a fully-enclosed garden to the side.



AUCTIONEERS CLOSE, PLYMPTON, PLYMOUTH PL7 1AH

ACCOMMODATION

Dual material door, with inset obscured uPVC double-glazed windows, opening into the entrance hall.

ENTRANCE HALL 12'0" x 6'11" (3.68 x 2.13)

Doors providing access to the ground floor accommodation. Stairs ascending to the first floor landing.

LOUNGE 15'10" x 9'10" (4.83 x 3.01)

uPVC double-glazed window to the front elevation. uPVC double-glazed patio doors opening to the garden.

KITCHEN/DINER 15'10" x 16'5" narr to 9'2" (4.83 x 5.02 narr to 2.81)

Fitted with a matching range of base and wall-mounted units incorporating a roll-edged wood-effect laminate worktop with inset 4-burner gas hob and extractor over, stainless-steel sink and mixer tap. Integrated oven. Spaces for washing machine, tumble dryer, dishwasher and American-style fridge/freezer. The boiler is enclosed with a wall-mounted unit. Pantry storage. uPVC double-glazed window to the rear elevation. The dining room area is currently being utilised as an office space with a uPVC double-glazed window to the front elevation.

DOWNSTAIRS WC 6'5" x 4'8" (1.98 x 1.44)

Low-level wc and pedestal wash handbasin with separate taps. Obscured uPVC double-glazed window to the front elevation.

FIRST FLOOR LANDING 10'4" x 6'5" (3.16 x 1.96)

Doors providing access to the first floor accommodation. uPVC double-glazed window to the rear elevation.

BEDROOM ONE 13'1" x 9'1" (4.00 x 2.78)

uPVC double-glazed window to the front elevation.

BEDROOM TWO 9'11" x 8'6" (3.03 x 2.60)

Built-in double wardrobe. Airing cupboard. Drop-down access hatch with ladder to partially-boarded, insulated loft with power and lighting. uPVC double-glazed windows to the front elevation.

BEDROOM THREE 6'11" x 6'5" (2.13 x 1.98)

uPVC double-glazed window to the side elevation.

BATHROOM 9'3" x 6'5" (2.82 x 1.97)

Fitted with a matching white suite comprising panelled bath with mixer tap, a double corner shower unit with waterfall attachment and a vanity storage unit housing a wash handbasin with mixer tap and concealed cistern wc. Extractor. Obscured uPVC double-glazed window to the rear elevation.

GARAGE

Situated adjacent to the property, beneath the coach house, with an up-&-over door.

OUTSIDE

The property is approached via a brick-paved driveway leading to the front door with a gate opening to a fully-enclosed easterly-facing side garden, which is laid to artificial grass and a patio seating area, bordered by red stone chippings, decorated with pot plants and a sapling, enclosed by feather-edged fencing.

AGENT'S NOTE

The garage lease is 99 years from May 2011.
Grounds maintenance £164.40 p/a - PS & B Estate Management

COUNCIL TAX

Plymouth City Council
Council Tax Band: D

SERVICES

The property is connected to all the mains services: gas, electricity, water and drainage.

WHAT3WORDS

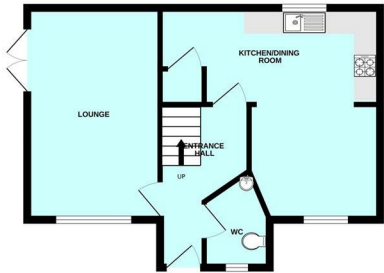
///saves.care.sheep

Area Map

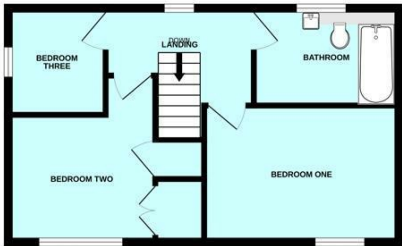


Floor Plans

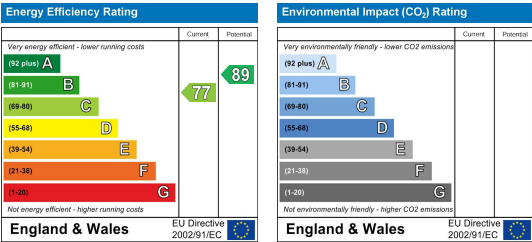
GROUND FLOOR



1ST FLOOR



Energy Efficiency Graph



These particulars, whilst believed to be accurate are set out as a general outline only for guidance and do not constitute any part of an offer or contract. Intending purchasers should not rely on them as statements of representation of fact, but must satisfy themselves by inspection or otherwise as to their accuracy. No person in this firm's employment has the authority to make or give any representation or warranty in respect of the property.