



103 Underwood Road

Plympton, Plymouth, PL7 1TA

£340,000



A characterful semi-detached home in the heart of Plympton with accommodation comprising lounge, dining room, conservatory, kitchen/breakfast room & a bedroom with an ensuite on the ground floor. On the first floor there are 2 further bedrooms, a wet room & access out onto a roof garden. There is a large garage & off-road parking for 2 vehicles.



UNDERWOOD ROAD, PLYMPTON, PLYMOUTH PL7 1TA

ACCOMMODATION

uPVC door, with inset obscured double-glazed glass panel, opening into the lounge.

LOUNGE 13'7" x 12'7" (4.15 x 3.86)

Feature fireplace with a slate hearth, natural stone mantel and surround. Door opening to bedroom three. uPVC double-glazed window to the front elevation. Open plan access with steps leading down into the dining area. Under-floor heating.

DINING AREA 10'2" x 9'11" (3.10 x 3.03)

Walkway with stairs ascending to the first floor landing. Storage cupboard. Doors leading to the kitchen/breakfast room, conservatory and downstairs wc. Under-floor heating.

KITCHEN 16'7" x 10'5" (5.06 x 3.18)

Fitted with a range of matching wooden base and wall-mounted units incorporating a breakfast bar and square-edged solid wood work top with inset 5-ring gas burner and extractor over, ceramic sink, drainer and mixer tap. Integrated oven, microwave, washing machine, dishwasher, fridge and freezer. Storage cupboard. uPVC double-glazed window to the rear elevation overlooking the garden.

CONSERVATORY 12'2" x 9'4" (3.72 x 2.86)

uPVC double-glazed windows to the side and rear elevations. uPVC obscured double-glazed door giving access to the driveway. Storage cupboard.

DOWNSTAIRS WC 6'11" x 3'0" (2.12 x 0.92)

Fitted with a close-coupled wc and pedestal wash handbasin. Obscured uPVC double-glazed window to the side elevation.

BEDROOM THREE 8'4" x 6'6" (2.55 x 1.99)

uPVC double-glazed window to the front elevation. Door opening into the ensuite.

ENSUITE 6'5" x 3'2" (1.98 x 0.97)

Corner shower unit with mains-fed shower, pedestal wash handbasin and close-coupled wc. Extractor fan.

FIRST FLOOR LANDING 11'8" x 9'6" (3.56 x 2.91)

Open tread steps leading up to doors providing access to the bathroom and bedroom one. Door providing access to bedroom. uPVC double-glazed patio doors opening to the garden balcony.

BEDROOM ONE 13'0" x 12'3" (3.97 x 3.75)

Range of fitted wardrobes. uPVC double-glazed window to the front elevation.

BEDROOM TWO 10'3" x 10'2" (3.13 x 3.11)

uPVC double-glazed window to the rear elevation overlooking the garden.

WET ROOM 13'0" x 6'7" (3.97 x 2.02)

A spacious bathroom, fitted with a 4-piece suite comprising corner bath with shower attachment, walk-in shower with waterfall shower head, large storage unit with inset wash handbasin and mixer tap and close-coupled wc. Chrome heated towel rail. Wet room flooring. Access hatch to insulated loft. Obscured uPVC double-glazed window to the front elevation.

GARAGE 32'3" x 12'11" (9.85 x 3.96)

Up-&-over door. Power and lighting.

OUTSIDE

The property is approached via a driveway which runs along the side of the property, with a right of access to the garage and parking spaces. Pedestrian access is via a public walkway. There is a balconied garden area, accessed from the first floor landing, laid to astroturf with a middle section of metal grating and the remainder laid to non-slip matting. There are also seating areas with views over Plympton and beyond.

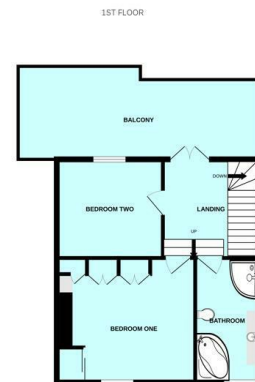
AGENT'S NOTE

Plymouth City Council
Council Tax Band: B

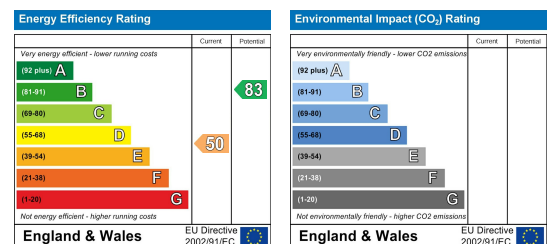
Area Map



Floor Plans



Energy Efficiency Graph



These particulars, whilst believed to be accurate are set out as a general outline only for guidance and do not constitute any part of an offer or contract. Intending purchasers should not rely on them as statements of representation of fact, but must satisfy themselves by inspection or otherwise as to their accuracy. No person in this firm's employment has the authority to make or give any representation or warranty in respect of the property.