

Newcourt Road, Exeter, EX5 4HR
Asking Price £280,000

 3  1  1  D



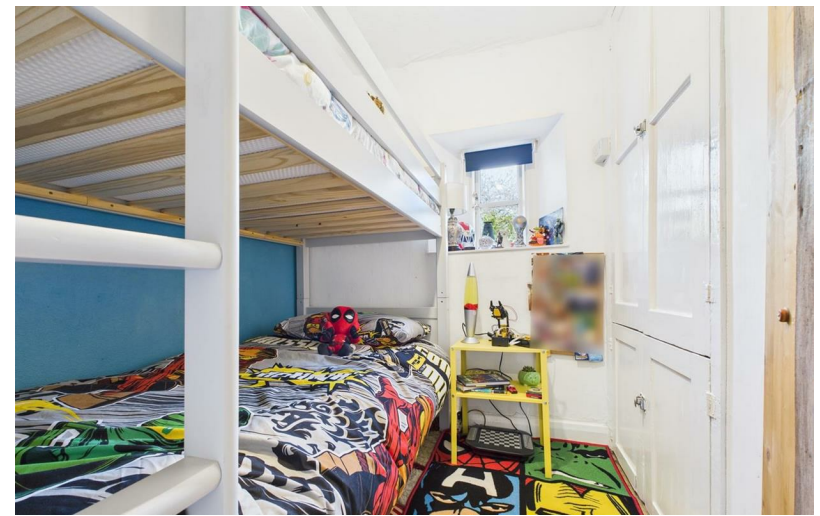
Newcourt Road

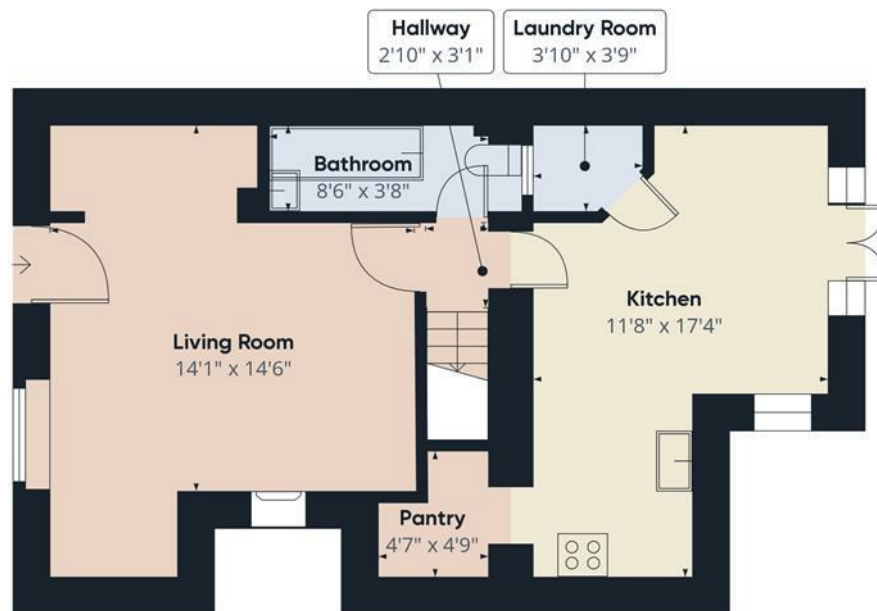
Exeter, EX5 4HR

Nestled in the heart of Silverton, one of Mid Devon's most charming and well-connected villages, this bright and airy three-bedroom mid-terrace cottage is bursting with character and combines period charm with spacious living and an exceptional outdoor area—large with lots of different purposes. The ground floor features a welcoming living room with a stunning stone fireplace and wood-burning stove, while the colourful, light-filled kitchen/diner—complete with vibrant tiled walls, wooden cabinets, and a skylight—opens through French doors onto a private courtyard. A stylish bathroom with adjoining utility space completes the downstairs. Upstairs offers three bedrooms, including a generous master, a cheerful second bedroom, and a versatile third room ideal as a nursery or study. Full of original details, cosy nooks, and rustic charm throughout, this cottage has plenty of character at every turn. Outside, the beautifully landscaped rear garden includes multiple seating areas, raised beds, a lawn with play space, and a large shed—perfect for entertaining and family life. The location is equally appealing, offering a peaceful countryside setting with local amenities including two pubs, a Post Office, primary school, and regular buses to Exeter and Tiverton. For commuters, it's a short drive to the M5 and Exeter St Davids, providing direct rail links to London, Bristol, and beyond—making this a perfect blend of village charm and connectivity.









Ground Floor



Floor 1



Approximate total area⁽¹⁾
716.23 ft²

(1) Excluding balconies and terraces

While every attempt has been made to ensure accuracy, all measurements are approximate, not to scale. This floor plan is for illustrative purposes only.

Calculations are based on RICS IPMS 3C standard.

GIRAFFE360