



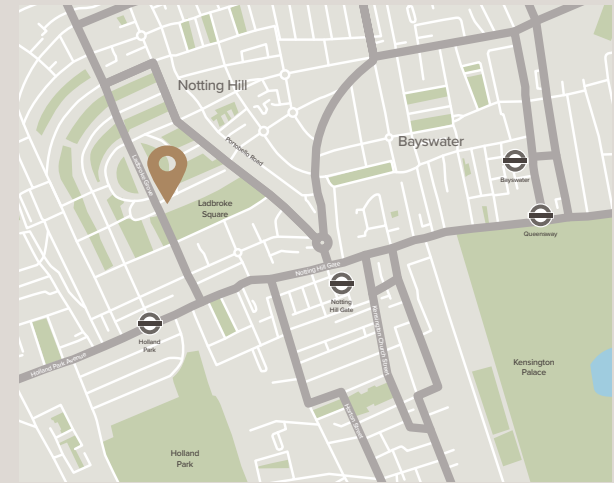
# The Lodge

Kensington Park Gardens  
Notting Hill W11



A wonderful first floor flat with an abundance of entertaining space as well as two bedrooms, including a principal suite in the heart of Notting Hill. The Lodge is situated on Kensington Park Gardens, one of Notting Hill's best-regarded roads, with a porter and lift as well as access to Ladbrooke Square Gardens.





## Accommodation

- Reception room
- Dining room
- TV room
- Kitchen
- Principal bedroom suite with bathroom and dressing room
- Further bedroom
- Shower room
- Cloakroom

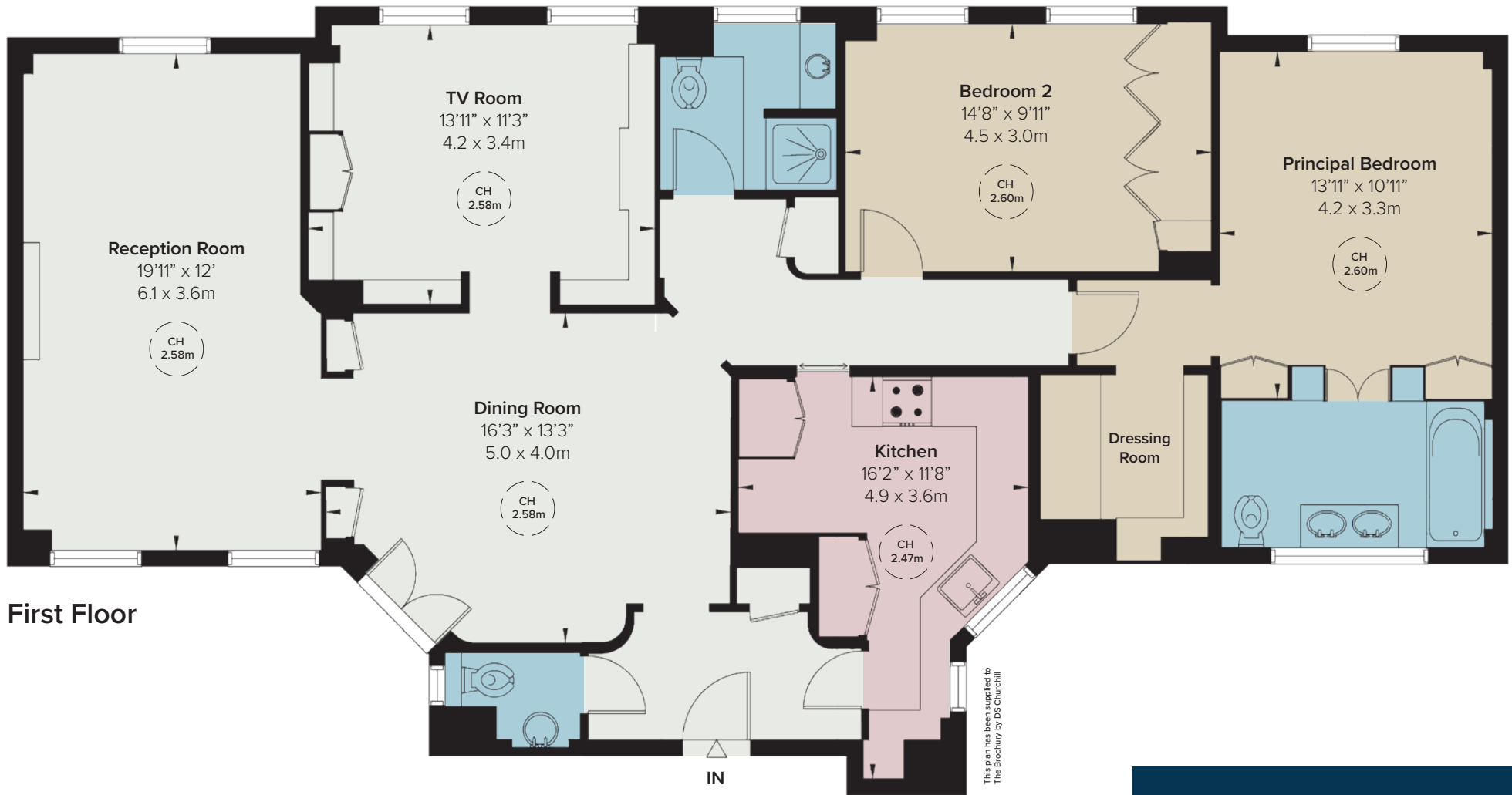
## Terms

Tenure: Leasehold

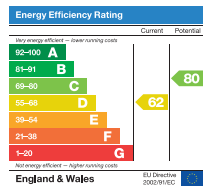
Local Authority: Kensington & Chelsea

Council Tax: Band G





## First Floor



Approximate Gross  
Internal Area  
1,386 sq ft / 129 sq m

# DS Churchill

29 Farm Street London W1J 5RL  
+44 (0)20 7629 7563  
info@dchurchill.com  
dchurchill.com