



Land - Building Plot
Two House Plot,
Torbeg Farm
Development,
Torbeg,
Blackwaterfoot,
KA27 8HE



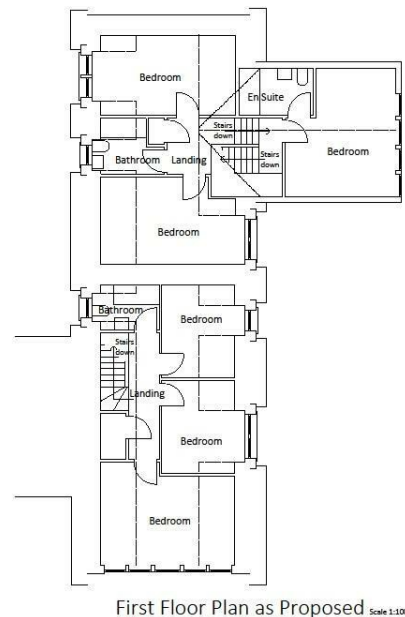
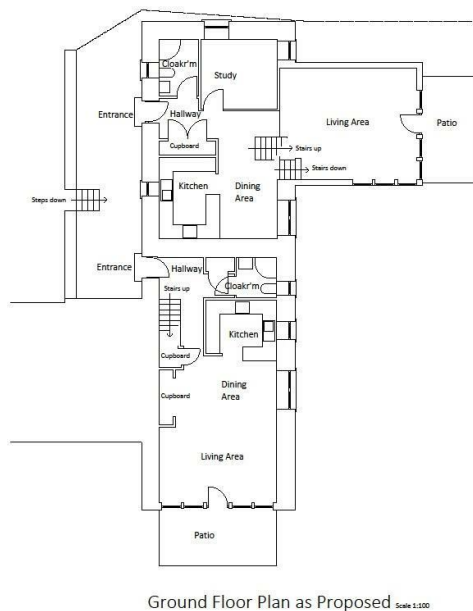
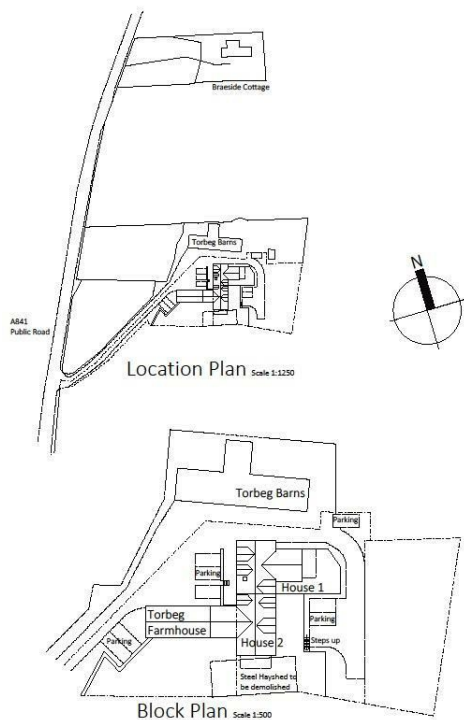
Arran
ESTATE AGENTS

ISLAND OWNED & RUN SINCE 1990

LOCATION, LOCATION, LOCATION,
 AN EXCELLENT DEVELOPMENT OPPORTUNITY TO CREATE TWO FULL TIME RESIDENCES, OR LETTING VILLAS, IN A BEAUTIFUL LOCATION ENJOYING
 WONDERFUL VIEWS OVER THE SHISKINE VALLEY - FROM THE MOUNTAINS TO THE NORTH, TO BLACKWATERFOOT AND THE FIRTH OF CLYDE AND BEYOND,
 TO THE SOUTH. THIS IS A RARE INVESTMENT OPPORTUNITY WITH POTENTIAL FOR EXCELLENT RETURNS IN THIS POPULAR AREA OF THE ISLAND

- Torbeg Farm development presently has three smaller completed conversions and planning approval has been granted for a further two.
- The proposed houses will be barn conversions with contemporary additions and will capitalise on the spectacular location.
- Each of the new villas will comprise spacious open plan ground floor living accommodation consisting of living, dining and lounge areas plus shower rooms - with the upper floors benefiting from three bedrooms and a family bathroom. Each property will have dedicated parking and private gardens.
- Additionally, there is a further plot which within the site. Planning approval would be required in order to build on this plot.
- Details of the planning consent can be viewed on the NAC website at : www.eplanning.northayrshire.gov.uk using reference 16/00717/PP

Located in a small clachan of properties, a short distance from all the amenities within Blackwaterfoot. The village and the Shiskine valley enjoys an active community with a village hall, primary school and benefits from a varied selection of shops, including a bakers, butchers, newsagents, general store with post office, garage with fuel station, hotel with leisure facilities, restaurants and bars. As well as the famous Shiskine Golf and Tennis Club, a beautiful sandy beach and access to a myriad of coastal and mountain trails.
 The primary school with early years classes is approximately two miles away in Shiskine and the secondary school is at Lamlash to which pupils are conveyed by bus daily.



DIRECTIONS

From Brodick Pier turn right and proceed through the village taking the B880 String Road to Blackwaterfoot. On reaching the main A841 road turn right down into Blackwaterfoot, travel through the village and up the hill heading towards Torbeg. Torbeg Farm is located on the right hand side. Proceed down the track to the courtyard where the plots are situated.

CONTACT

Invercloy House Brodick
 Isle of Arran
 North Ayrshire
 KA27 8AJ

E: sales@arranestateagents.co.uk
 T: 01770 302310
www.arranestateagents.co.uk

Arran
 ESTATE AGENTS

ISLAND OWNED & RUN SINCE 1990