

23 Sackville Road, Bexhill On Sea, TN39 3JD

£9,000

Maltbys are excited to offer new to the market this versatile commercial space situated in an area of high foot traffic. Situated over two floors, the ground floor is the retail space and the basement offers great storage. Available immediately and on a new lease, please call Maltbys for further information.

23 Sackville Road, Bexhill On Sea, TN39 3JD

£9,000



- Area Of High Foot Traffic
- Close To Seafront
- Basement Storage
- New Lease
- Town Centre Location
- Available Immediately

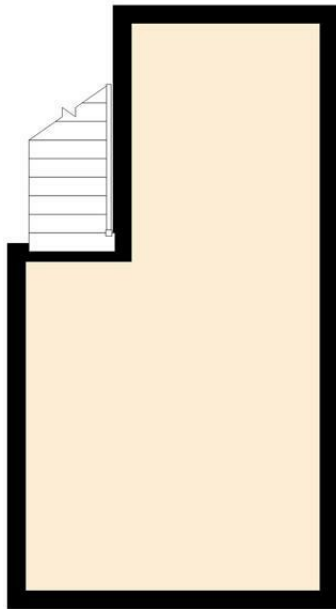


[Directions](#)

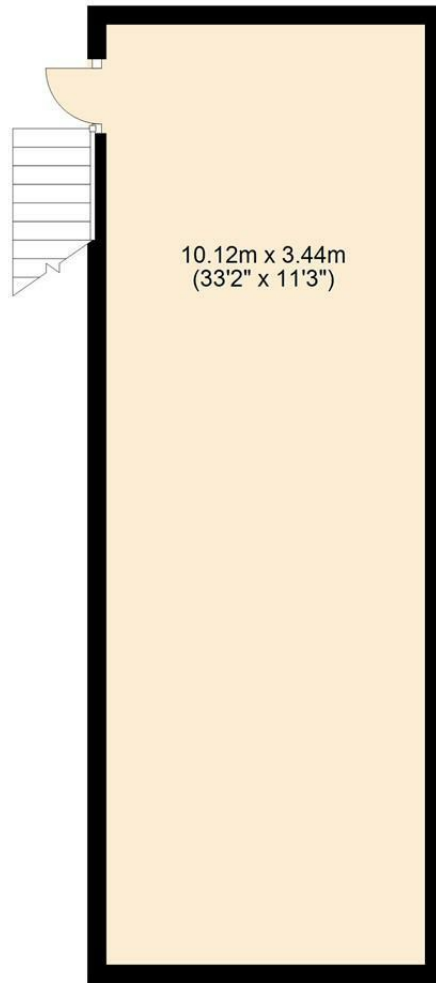
Tel: 01424 730678



Basement
Approx. 16.4 sq. metres (176.3 sq. feet)



Ground Floor
Approx. 34.8 sq. metres (374.3 sq. feet)



Total area: approx. 51.2 sq. metres (550.6 sq. feet)

Energy Efficiency Rating		Environmental Impact (CO ₂) Rating	
Current	Potential	Current	Potential
Very energy efficient - lower running costs (92 plus) A (81-91) B (69-80) C (55-68) D (39-54) E (21-38) F (1-20) G Not energy efficient - higher running costs		Very environmentally friendly - lower CO ₂ emissions (92 plus) A (81-91) B (69-80) C (55-68) D (39-54) E (21-38) F (1-20) G Not environmentally friendly - higher CO ₂ emissions	
England & Wales	EU Directive 2002/91/EC	England & Wales	EU Directive 2002/91/EC

These particulars, whilst believed to be accurate are set out as a general outline only for guidance and do not constitute any part of an offer or contract. Intending purchasers should not rely on them as statements of representation of fact, but must satisfy themselves by inspection or otherwise as to their accuracy. No person in this firm's employment has the authority to make or give any representation or warranty in respect of the property.