

2 Queens Parade, Hove BN3 8JG | 01273 322766
sales@wpgsussex.co.uk | www.wpgsussex.co.uk

Company Registration No: 11397540



WEATHERILL
Property Group
Your Property Matters



47 Alexandra Court Hove BN3 7RF

The Weatherill Property Group are pleased to present this good sized and well laid out Top Floor Retirement Flat, with benefits including a passenger lift, a guest suite, a communal lounge and beautiful gardens. Alexandra Court is located within St Peters Close, a very quiet and peaceful road, close to the windmill in Hove's popular Nevill area.



Offers In The Region Of £200,000 Leasehold

All of our properties are available to view online at www.weatherillpropertygroup.co.uk



Viewing

Call us on 01273 322766 or email us: sales@wpgsussex.co.uk


Agents Notes

Arranged over a single level, the apartment itself contains a **DOUBLE BEDROOM, A SHOWER ROOM, A LOUNGE/DINING ROOM, AN ENTRANCE HALL AND A KITCHEN.**

Within the block itself, Alexandra Court has a **PASSENGER LIFT** to all floors, **BEAUTIFUL COMMUNAL GARDENS AND GROUNDS**, a communal lounge and kitchen, a guest suite and a laundry room. St Peters Close is located close to local shops, bus services and the Waitrose store in Nevill Road. Without question it is one of the most highly regarded retirement blocks within the city, therefore we would welcome anyone aged 55 or over viewing the property.

- AN IMPRESSIVE & WELL LAID OUT TOP FLOOR FLAT
- PASSENGER LIFT ACCESS TO ALL FLOORS
- VIEWS OVER THE COMMUNAL GARDENS FROM THE PRINCIPAL ROOMS
- A DOUBLE BEDROOM, SHOWER ROOM, LOUNGE/DINING ROOM
- SEPARATE KITCHEN

EPC

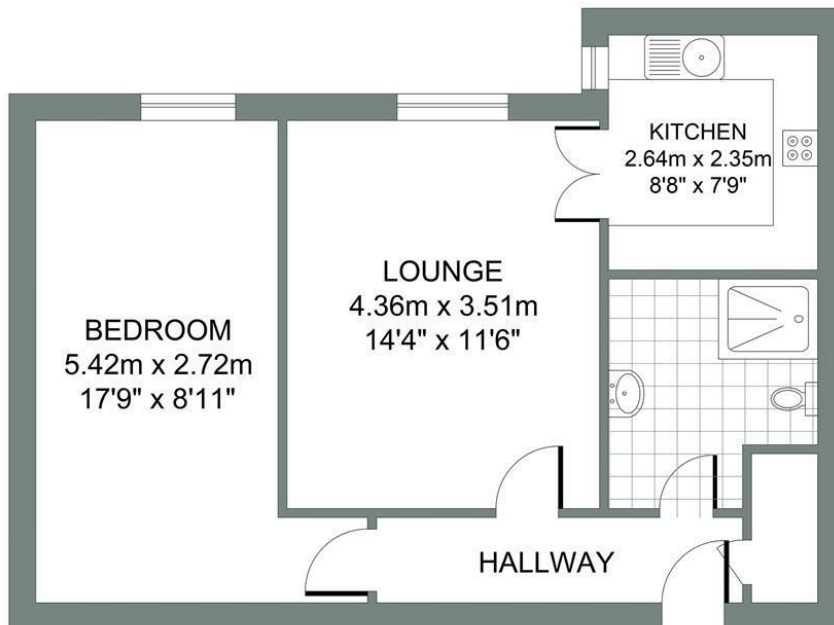
Energy Efficiency Rating		Current	Potential
Very energy efficient - lower running costs			
(92 plus)	A		
(81-91)	B		
(69-80)	C	73	75
(55-68)	D		
(39-54)	E		
(21-38)	F		
(1-20)	G		
Not energy efficient - higher running costs			
England & Wales		EU Directive 2002/91/EC 	



Floor plans

SECOND FLOOR

Approximate Gross Internal Area
35.07 sq m / 377.49 sq ft



ALEXANDRA COURT, ST PETERS CLOSE, HOVE

Total Area : 35.07m² = 377.49ft²

Illustration for identification purposed only, measurements are approximate, not to scale.
© Weatherill Property Group

You may download, store and use the material for your own personal use and research. You may not republish, retransmit, redistribute or otherwise make the material available to any party or make the same available on any website, online service or bulletin board of your own or of any other party or make the same available in hard copy or in any other media without the website owner's express prior written consent. The website owner's copyright must remain on all reproductions of material taken from this website.