

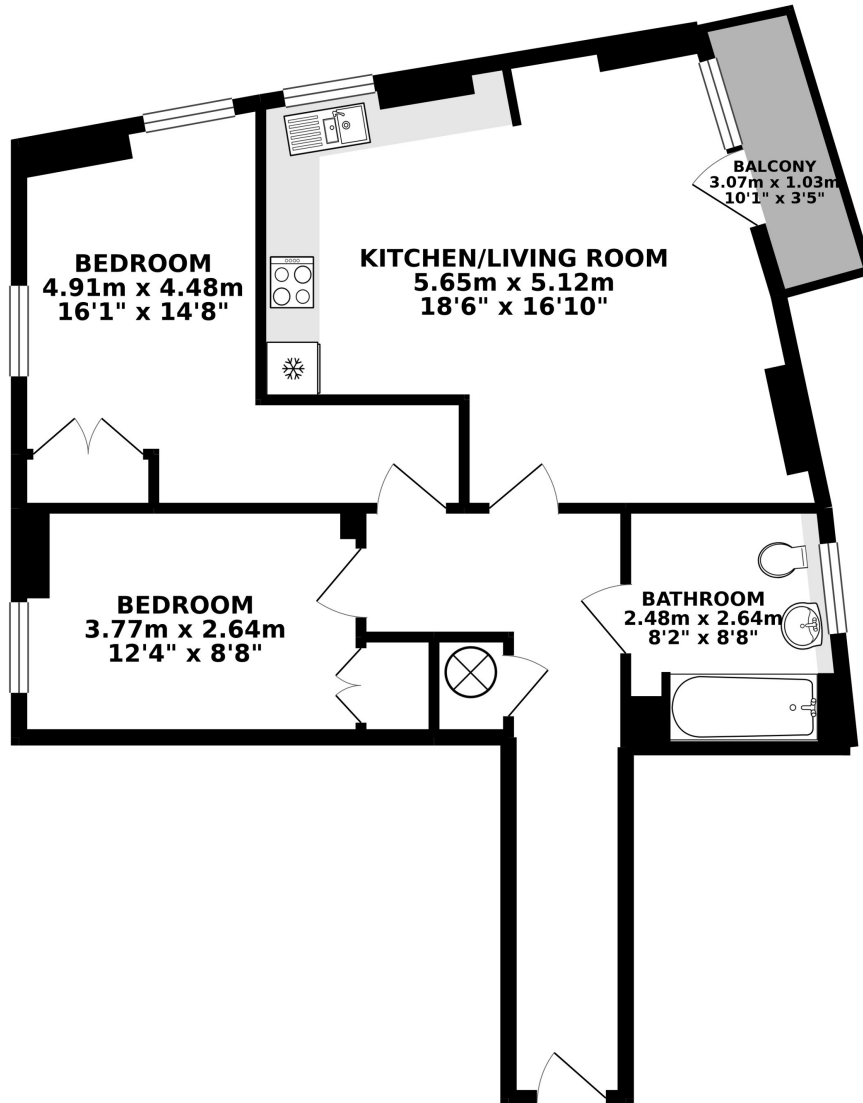


CHRISP STREET, E14

£1,900 pcm

Two well-proportioned bedrooms and a three-piece bathroom, offered fully furnished with neutral interiors. The building features a communal roof terrace and video-phone entry. Located above Langdon Park DLR station, providing quick access to the City and Canary Wharf. Suitable for professionals or couples. Viewings available.

- 2 Bed
- 1 Bath
- Private balcony
- Communal Roof Terrace
- Furnished
- Close to Langdon Park DLR 8



TOTAL FLOOR AREA : 67.07 sq. m. (721.93 sq. ft.) approx.

Whilst every attempt has been made to ensure the accuracy of the floorplan contained here, measurements of doors, windows, rooms and any other items are approximate and no responsibility is taken for any error, omission or mis-statement. This plan is for illustrative purposes only and should be used as such by any prospective purchaser. The services, systems and appliances shown have not been tested and no guarantee as to their operability or efficiency can be given.
Made with Metropix ©2019



LiFE RESIDENTIAL

16 Royal Crest Avenue,
London, E16 2TQ
Sales: 020 3846 3332
Lettings: 020 3846 3311

Energy Rating: B. We aim to make our particulars both accurate and reliable. However they are not guaranteed; nor do they form part of an offer or contract. If you require clarification on any points then please contact us, especially if you're traveling some distance to view. Please note that appliances and heating systems have not been tested and therefore no warranties can be given as to their good working order.