

Rutland Court, SW7



A Beautiful three bedroom apartment located in this gated secure portered period mansion block in the heart of Knightsbridge. The apartment benefits from numerous high-tech specifications, including 3D televisions, integrated sound system and remote blinds. With added benefit of parking CCTV, 24hr security and residents Gym. ALSO AVAILABLE FOR SHORT LETS AT £3000 PER WEEK

1410.00 sq ft | 1 RECEPTION ROOM | 3 BEDROOMS | EN SUITE SHOWER ROOM | 3 BATHROOMS | KITCHEN



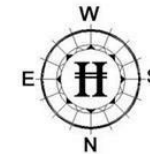
£1,250 Per Week

020 7937 9070
www.croftinternational.co.uk

Furnished



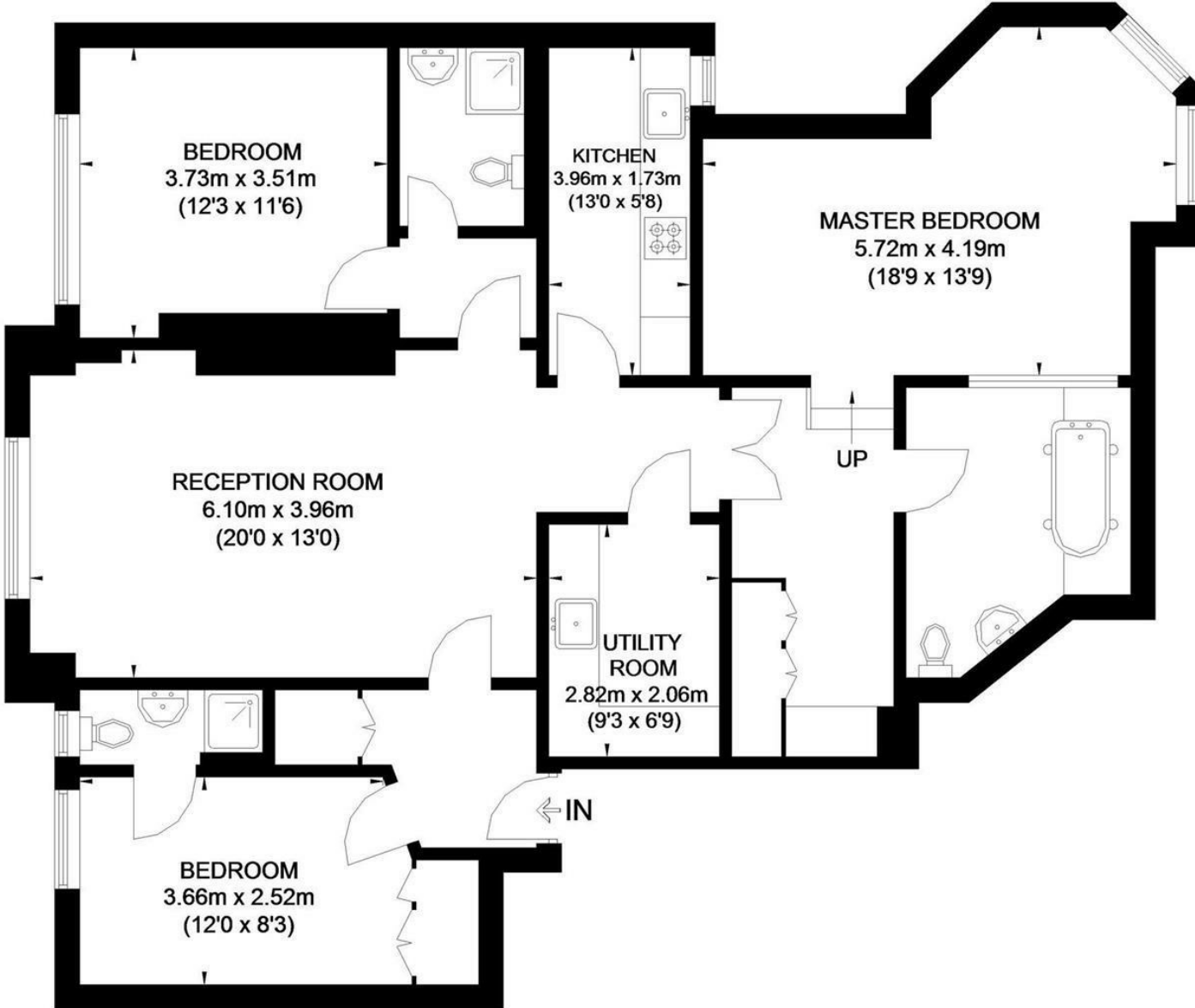
RUTLAND COURT



THIS PLAN HAS BEEN DRAWN FROM SUPPLIED PLANS, STRICTLY FOR USE AS A GUIDE ONLY

APPROXIMATE GROSS INTERNAL AREA
LOWER GROUND FLOOR
1410 SQ. FT. (131.06 SQ. M.)

This plan is for layout guidance only. Not drawn to scale unless stated. Windows and door openings are approximate. Whilst every care is taken in the preparation of this plan, please check all dimensions, shapes and compass bearings before making any decisions reliant upon them. Please be advised that Hamptons International / our agents have not seen or reviewed any building regulations or planning permission in relation to works carried out to the property (ID416562)



LOWER GROUND FLOOR

