

PLOT 9

# THE ORCHARDS

DUNSTON

3 bed | 3 bath | 1 reception



**THE NEW  
HOMES  
AGENT**

[thenewhomesagent.co.uk](http://thenewhomesagent.co.uk)  
[enquiries@tnha.co.uk](mailto:enquiries@tnha.co.uk)

+44 (0)1522 440 445

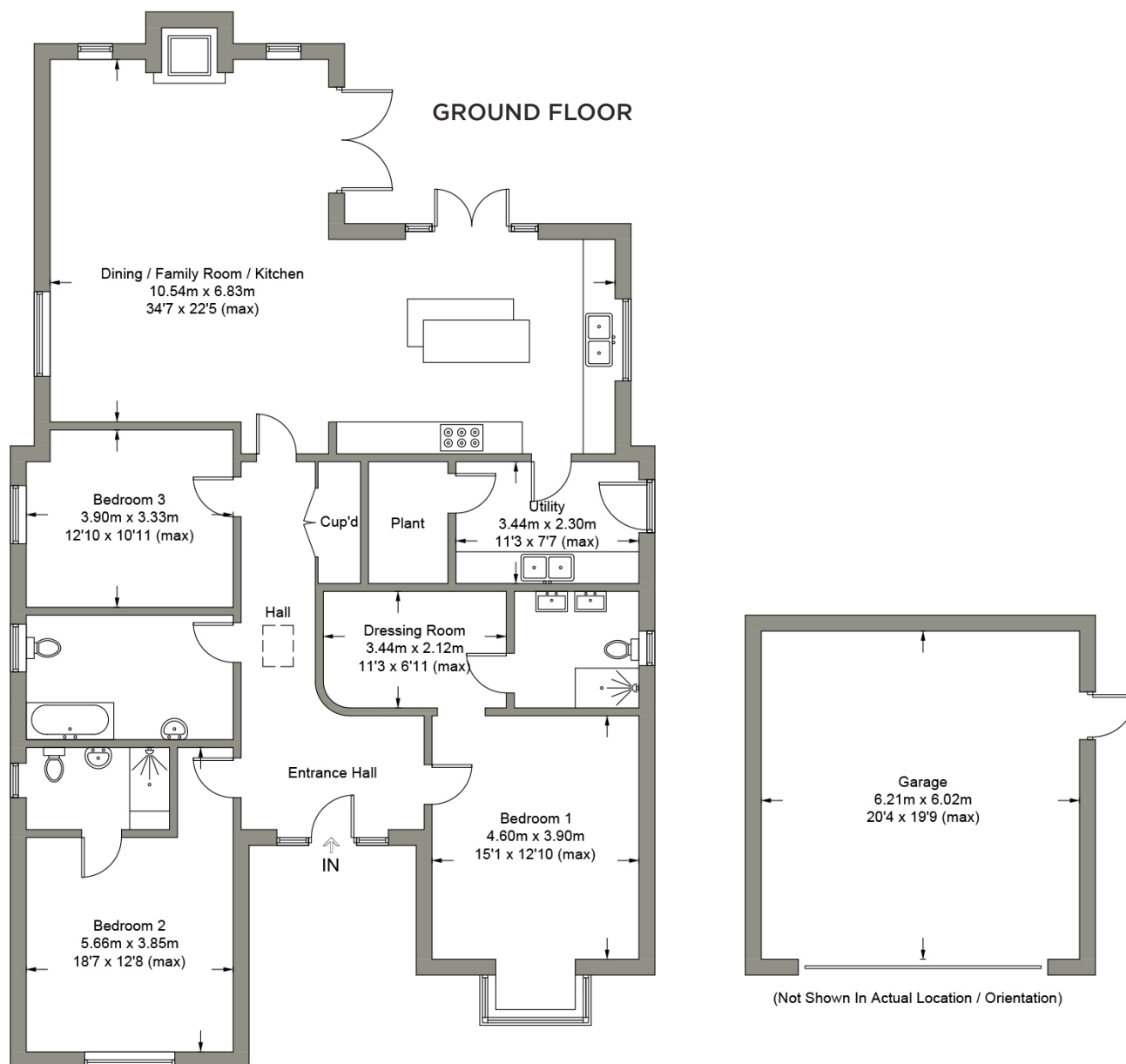
Scan me ▶  
to see  
full details  
online



## FLOOR PLANS

Ground Floor	Size (m)	Size (ft)
Hallway		
Dining/Family Room/ Kitchen	10.54m x 6.83m	34'7 x 22'5
Utility	3.44m x 2.30m	11'3 x 7'7
Plant	1.51m x 2.30m	4'11 x 7'7

Ground Floor	Size (m)	Size (ft)
Bedroom 1	4.60m x 3.90m	15'1 x 12'10
Dressing Room	3.44m x 2.12m	11'3 x 6'11
En-suite	2.35m x 2.12m	7'9 x 6'11
Bedroom 2	5.66m x 3.85m	18'7 x 12'8
En-suite	2.77m x 1.53m	9'1 x 5'0
Family Bathroom	3.90m x 2.35m	12'10 x 7'9
Bedroom 3	3.90m x 3.33m	12'10 x 10'11



**FLOOR PLANS** ARE FOR LAYOUT GUIDANCE ONLY. NOT DRAWN TO SCALE UNLESS STATED. WINDOWS AND DOOR OPENINGS ARE APPROXIMATE. WHILST EVERY CARE IS TAKEN IN THE PREPARATION OF THESE PLANS, PLEASE CHECK ALL DIMENSIONS, SHAPES AND COMPASS BEARINGS, BEFORE MAKING ANY DECISIONS RELIANT UPON THEM.

a moving experience

**ALL VIEWINGS ARE TO BE ORGANISED VIA THE NEW HOMES AGENT.**

WHILST EVERY CARE HAS BEEN TAKEN TO PREPARE THESE SALES PARTICULARS, THEY ARE FOR GUIDANCE PURPOSES ONLY. ALL MEASUREMENTS ARE APPROXIMATE AND FOR GENERAL GUIDANCE PURPOSES ONLY AND WHILST EVERY CARE HAS BEEN TAKEN TO ENSURE THEIR ACCURACY, THEY SHOULD NOT BE RELIED UPON AND POTENTIAL BUYERS ARE ADVISED TO RECHECK THE MEASUREMENTS.