

THE FARMHOUSE

MANOR FARMYARD

FISKERTON

4 bed | 3 bath | 3 reception



**THE NEW
HOMES
AGENT**

thenewhomesagent.co.uk
enquiries@tnha.co.uk

+44 (0)1522 440 445

Scan me ▶
to see
full details
online



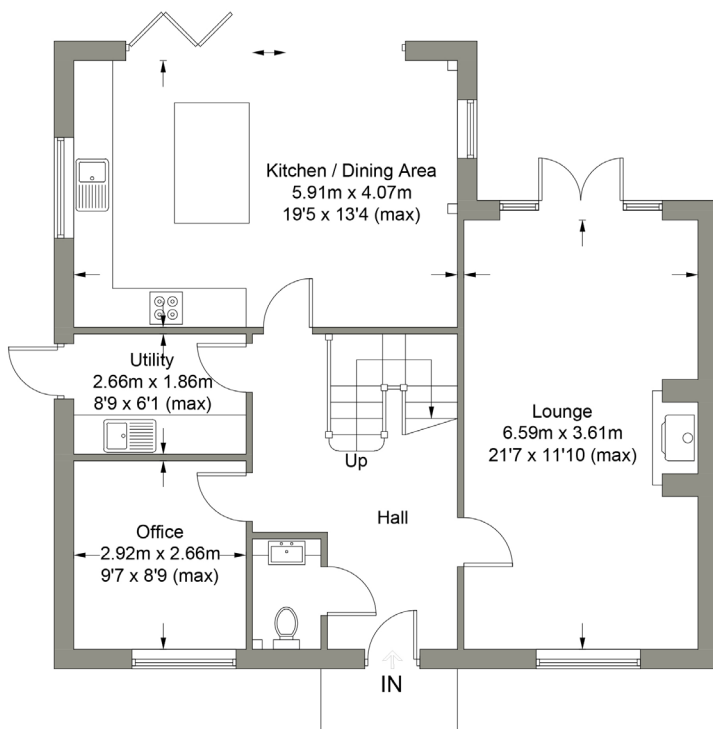
FLOOR PLANS

Ground Floor	Size (m)	Size (ft)
Hall		
WC		
Lounge	6.59m x 3.61m	21'7 x 11'10
Kitchen/Dining Area	5.91m x 4.07m	19'5 x 13'4
Utility	2.66m x 1.86m	8'9 x 6'1
Office	2.92m x 2.66m	8'9 x 9'7

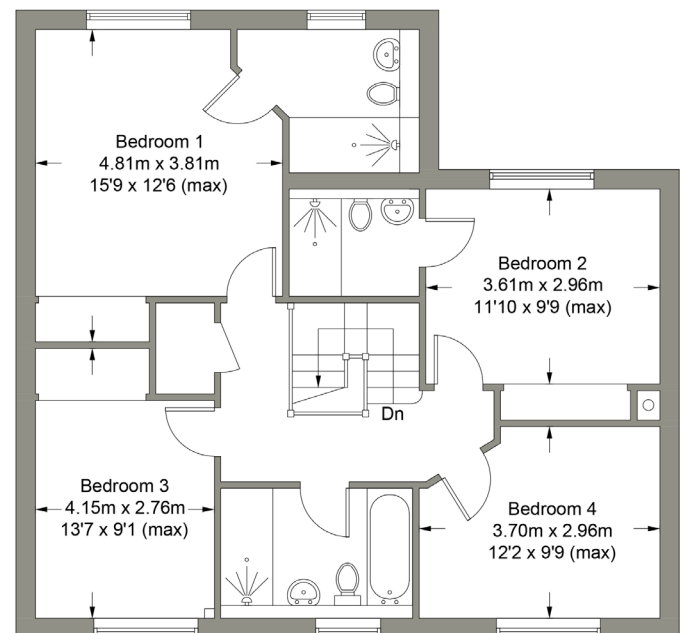
First Floor	Size (m)	Size (ft)
Landing		
Bedroom 1	3.81m x 4.81m	12'6 x 15'9
En-suite		
Bedroom 2	3.61m x 2.96m	11'10 x 9'9
En-suite	2.00m x 1.80m	6'7 x 5'11
Bedroom 3	2.76m x 4.15m	9'1 x 13'7
Bedroom 4	3.70m x 2.96m	12'2 x 9'9
Family Bathroom	2.96m x 2.00m	9'9 x 6'7

DIGITALLY ENHANCED IMAGES: Some internal and external photographs of this property have been digitally enhanced to add landscaping and furniture, to help buyers to visualise how this property will look once complete and furnished. These images are provided as a guide only and cannot be relied upon for 100% accuracy.

GROUND FLOOR



FIRST FLOOR



FLOOR PLANS ARE FOR LAYOUT GUIDANCE ONLY. NOT DRAWN TO SCALE UNLESS STATED. WINDOWS AND DOOR OPENINGS ARE APPROXIMATE. WHILST EVERY CARE IS TAKEN IN THE PREPARATION OF THESE PLANS, PLEASE CHECK ALL DIMENSIONS, SHAPES AND COMPASS BEARINGS, BEFORE MAKING ANY DECISIONS RELIANT UPON THEM.

a moving experience

ALL VIEWINGS ARE TO BE ORGANISED VIA THE NEW HOMES AGENT.

WHILST EVERY CARE HAS BEEN TAKEN TO PREPARE THESE SALES PARTICULARS, THEY ARE FOR GUIDANCE PURPOSES ONLY. ALL MEASUREMENTS ARE APPROXIMATE AND FOR GENERAL GUIDANCE PURPOSES ONLY AND WHILST EVERY CARE HAS BEEN TAKEN TO ENSURE THEIR ACCURACY, THEY SHOULD NOT BE RELIED UPON AND POTENTIAL BUYERS ARE ADVISED TO RECHECK THE MEASUREMENTS.