

NEWMARCH HOUSE

INGHAM

6 bed | 5 bath | 5 reception



THE NEW
HOMES
AGENT

thenewhomesagent.co.uk
enquiries@tnha.co.uk

+44 (0)1522 440 445

Scan me ▶
to see
full details
online

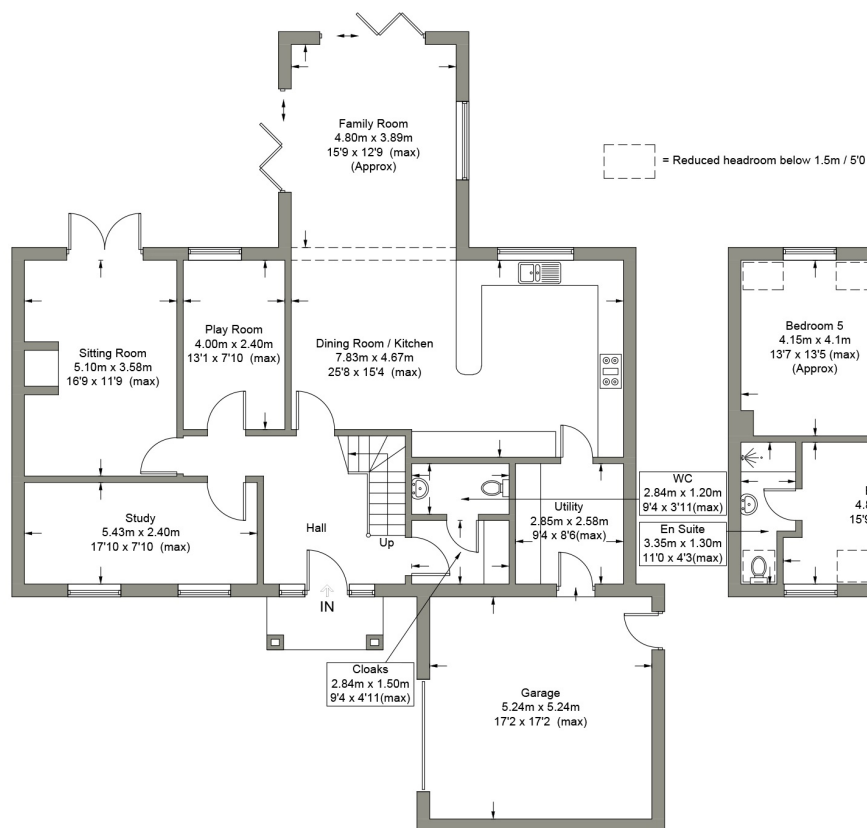


FLOOR PLANS

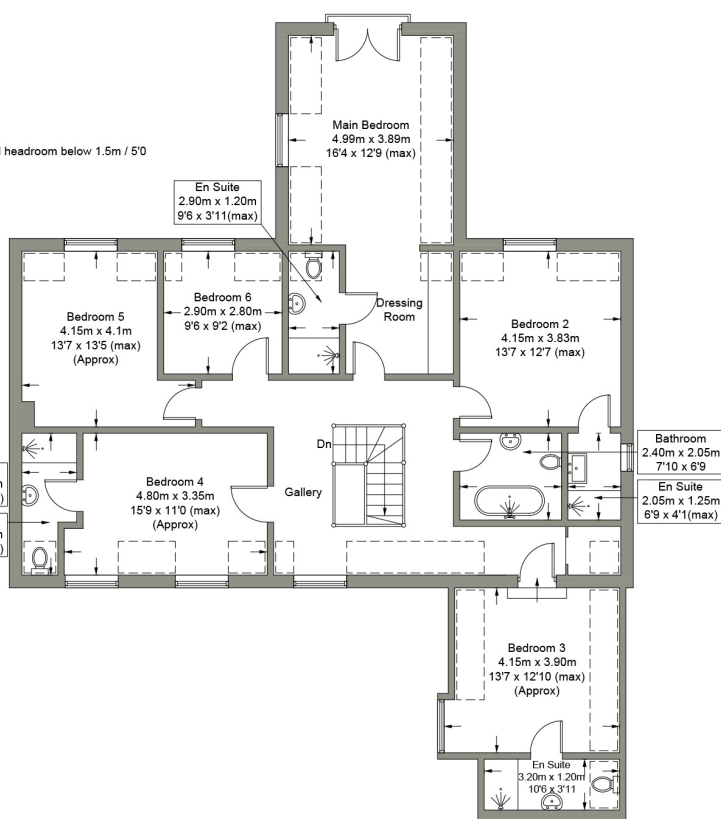
Ground Floor	Size (m)	Size (ft)
Hall		
Cloaks	2.84m x 1.50m	9'4 x 4'11
WC	2.84m x 1.20m	9'4 x 3'11
Study	5.43m x 2.40m	17'10 x 7'10
Sitting Room	5.10m x 3.58m	16'9 x 11'9
Play Room	4.00m x 2.40m	13'1 x 7'10
Dining Room/Kitchen	7.83m x 4.67m	25'8 x 15'4
Family Room	4.80m x 3.89m	15'9 x 12'9
Utility	2.85m x 2.58m	9'4 x 8'6
Garage	5.24m x 5.24m	17'2 x 17'2

First Floor	Size (m)	Size (ft)
Main Bedroom	4.99m x 3.89m	16'4 x 12'9
Dressing Room		
En-suite	2.90m x 1.20m	9'6 x 3'11
Bedroom 2	4.15m x 3.83m	13'7 x 12'7
En-suite	2.05m x 1.25m	6'9 x 4'1
Bedroom 3	4.15m x 3.90m	13'7 x 12'10
En-suite	3.20m x 1.20m	10'6 x 3'11
Bedroom 4	4.80m x 3.35m	15'9 x 11'0
En-suite	3.35m x 1.30m	11'0 x 4'3
Bedroom 5	4.15m x 4.10m	13'7 x 13'5
Bedroom 6	2.90m x 2.80m	9'6 x 9'2
Family Bathroom	2.40m x 2.05m	7'10 x 6'9

GROUND FLOOR



FIRST FLOOR



FLOOR PLANS ARE FOR LAYOUT GUIDANCE ONLY. NOT DRAWN TO SCALE UNLESS STATED. WINDOWS AND DOOR OPENINGS ARE APPROXIMATE. WHILST EVERY CARE IS TAKEN IN THE PREPARATION OF THESE PLANS, PLEASE CHECK ALL DIMENSIONS, SHAPES AND COMPASS BEARINGS, BEFORE MAKING ANY DECISIONS RELIANT UPON THEM.

a moving experience

ALL VIEWINGS ARE TO BE ORGANISED VIA THE NEW HOMES AGENT.

WHILST EVERY CARE HAS BEEN TAKEN TO PREPARE THESE SALES PARTICULARS, THEY ARE FOR GUIDANCE PURPOSES ONLY. ALL MEASUREMENTS ARE APPROXIMATE AND FOR GENERAL GUIDANCE PURPOSES ONLY AND WHILST EVERY CARE HAS BEEN TAKEN TO ENSURE THEIR ACCURACY, THEY SHOULD NOT BE RELIED UPON AND POTENTIAL BUYERS ARE ADVISED TO RECHECK THE MEASUREMENTS.