

POTTERS BARN

THE WILLOWS

GLENTHAM

4 bed | 2 bath | 3 reception



**THE NEW
HOMES
AGENT**

thenewhomesagent.co.uk
enquiries@tnha.co.uk

+44 (0)1522 440 445

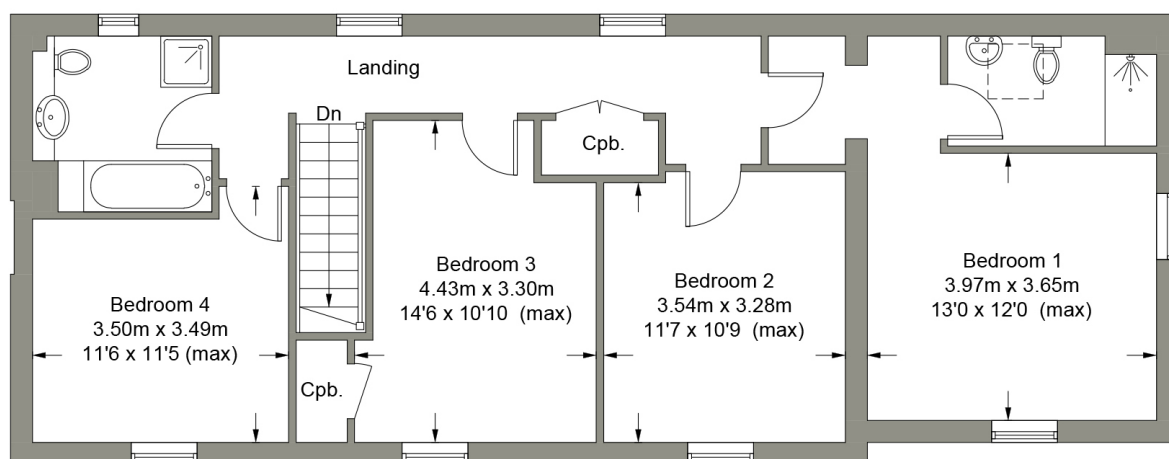
Scan me ▶
to see
full details
online



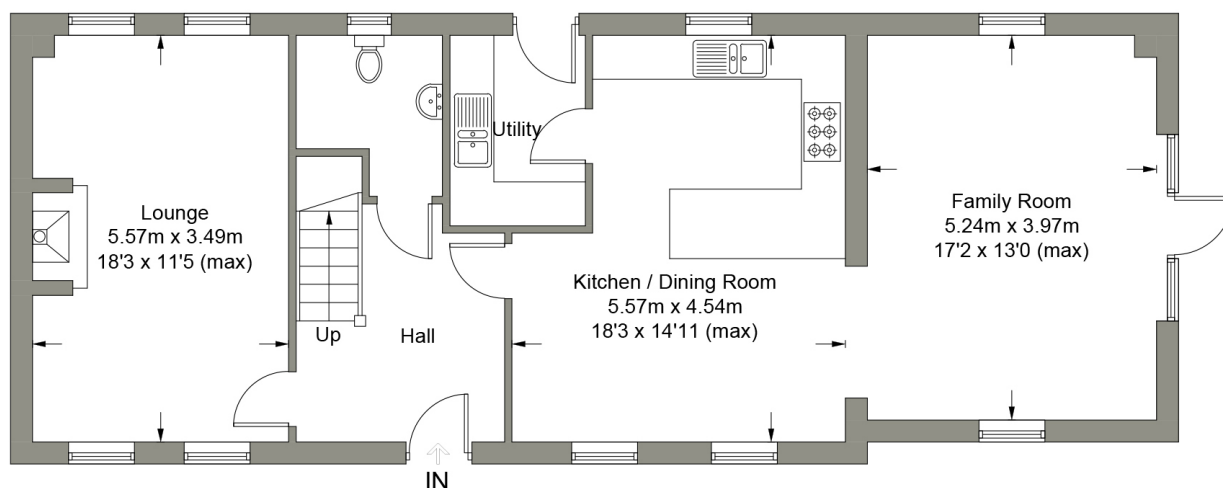
FLOOR PLANS

Ground Floor	Size (m)	Size (ft)
Hallway		
WC		
Kitchen/Dining Room	5.57m x 4.54m	18'3 x 14'11
Family Room	5.24m x 3.97m	17'2 x 13'0
Utility Room	1.85m x 2.60m	6'1 x 8'6
Lounge	5.57m x 3.49m	18'3 x 11'5

First Floor	Size (m)	Size (ft)
Landing		
Bedroom 1	3.97m x 3.65m	13'0 x 12'0
En-suite to Bed 1	2.84m x 1.50m	9'4 x 4'11
Bedroom 2	3.54m x 3.28m	11'7 x 10'9
Bedroom 3	4.43m x 3.30m	14'6 x 10'10
Bedroom 4	3.50m x 3.49m	11'6 x 11'5
Family Bathroom	2.45m x 2.44m	8'0 x 8'0



FIRST FLOOR



GROUND FLOOR

FLOOR PLANS ARE FOR LAYOUT GUIDANCE ONLY. NOT DRAWN TO SCALE UNLESS STATED. WINDOWS AND DOOR OPENINGS ARE APPROXIMATE. WHILST EVERY CARE IS TAKEN IN THE PREPARATION OF THESE PLANS, PLEASE CHECK ALL DIMENSIONS, SHAPES AND COMPASS BEARINGS, BEFORE MAKING ANY DECISIONS RELIANT UPON THEM.

a moving experience

ALL VIEWINGS ARE TO BE ORGANISED VIA THE NEW HOMES AGENT.

WHILST EVERY CARE HAS BEEN TAKEN TO PREPARE THESE SALES PARTICULARS, THEY ARE FOR GUIDANCE PURPOSES ONLY. ALL MEASUREMENTS ARE APPROXIMATE AND FOR GENERAL GUIDANCE PURPOSES ONLY AND WHILST EVERY CARE HAS BEEN TAKEN TO ENSURE THEIR ACCURACY, THEY SHOULD NOT BE RELIED UPON AND POTENTIAL BUYERS ARE ADVISED TO RECHECK THE MEASUREMENTS.