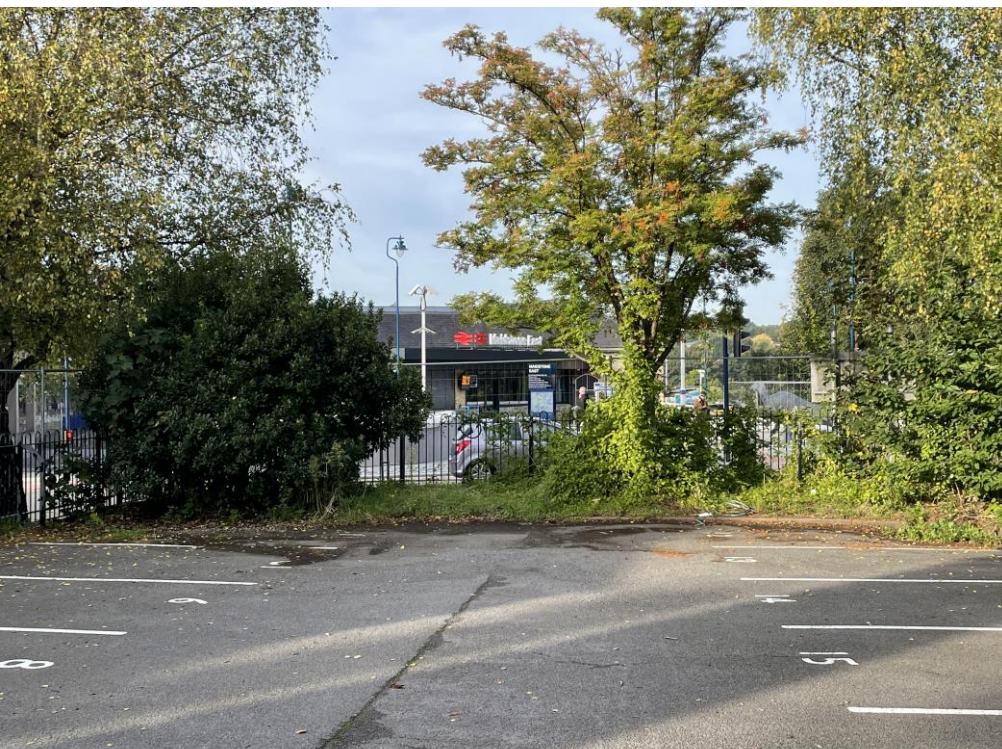


**LAND AT WEEK STREET / COUNTY ROAD, MAIDSTONE, KENT, ME14 1RH**

**SIBLEY PARES**

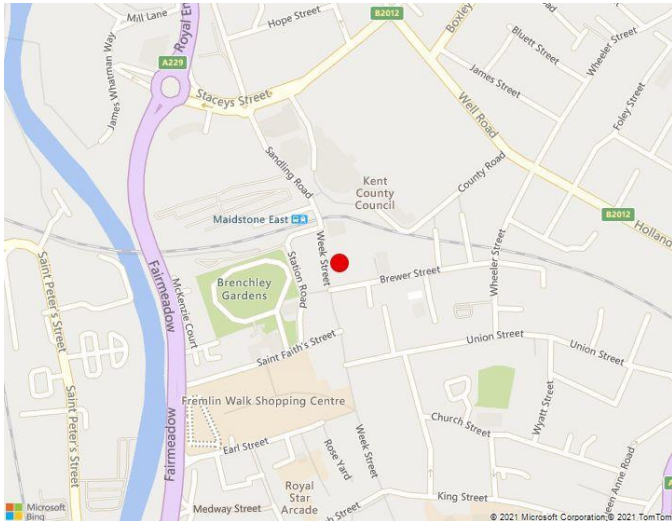
**CHARTERED SURVEYORS & ESTATE AGENTS**



- Town centre location
- 23 car parking spaces
- Directly opposite Maidstone East Train Station
- £25,000 per annum
- Located on the corner of Week Street and County Road, opposite Sessions House



# LAND AT WEEK STREET / COUNTY ROAD, MAIDSTONE, KENT, ME14 1RH



## Rent/Price

£25,000 per annum

## Terms

To take a new lease by negotiation.

## Legal Costs

Each side to bear its own legal and professional costs

## VAT

Unless otherwise stated, all rents/prices are quoted exclusive of Value Added Tax (VAT). Prospective occupiers should satisfy themselves as to any VAT payable in respect of any transaction.

## Viewing



**Matthew Sadler**

matt.sadler@sibleypares.co.uk



## Location

The property is located on Week Street, one of the main pedestrianised shopping areas in Maidstone, the county town of Kent. The property is located opposite Maidstone East Train Station and Kent County Council's Offices.

Maidstone is located approximately 38 miles south east of London and 20 miles north west of Ashford. It has a large catchment population of circa 332,000 with an over representation of those within the highest AB and C1 social categories, and an extremely low rate of unemployment. There are excellent transport links with regular departures to the Capital and journey times of under an hour. Both stations are within a short walk from the property.

## Description

To Let - Town Centre Car Park with 23 spaces opposite Maidstone East Train Station

## Accommodation

The site comprises 23 numbered car parking spaces.

## Rateable Value

To be re-assessed



**SIBLEY PARES**

**CHARTERED SURVEYORS & ESTATE AGENTS**

**01622 673086**

**sibleypares.co.uk**

**NOTE:** Rental, prices or any other charges are inclusive of VAT unless otherwise stated. MISREPRESENTATION ACT 1967. These particulars are believed to be correct, their accuracy cannot be guaranteed and are expressly excluded from any other contract. Any intending purchaser must satisfy himself by inspection or otherwise as to the correctness of each of the statements contained in these particulars. No fittings, appliances or services mentioned have been tested by Sibley Pares.