



ASPIRE RESIDENTIAL

Service | Expertise | Accountability



Hamble Road, Lancing, BN15 0ES

£900 PCM

Open Day Saturday 11th between 10am-11.30am

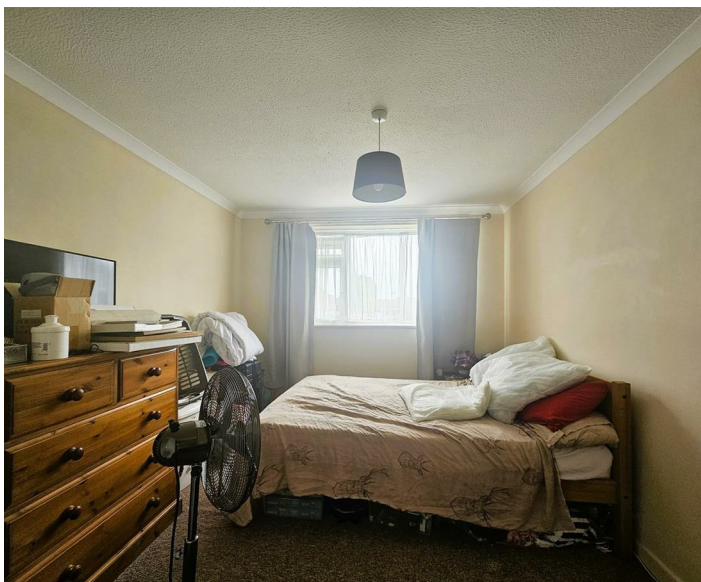
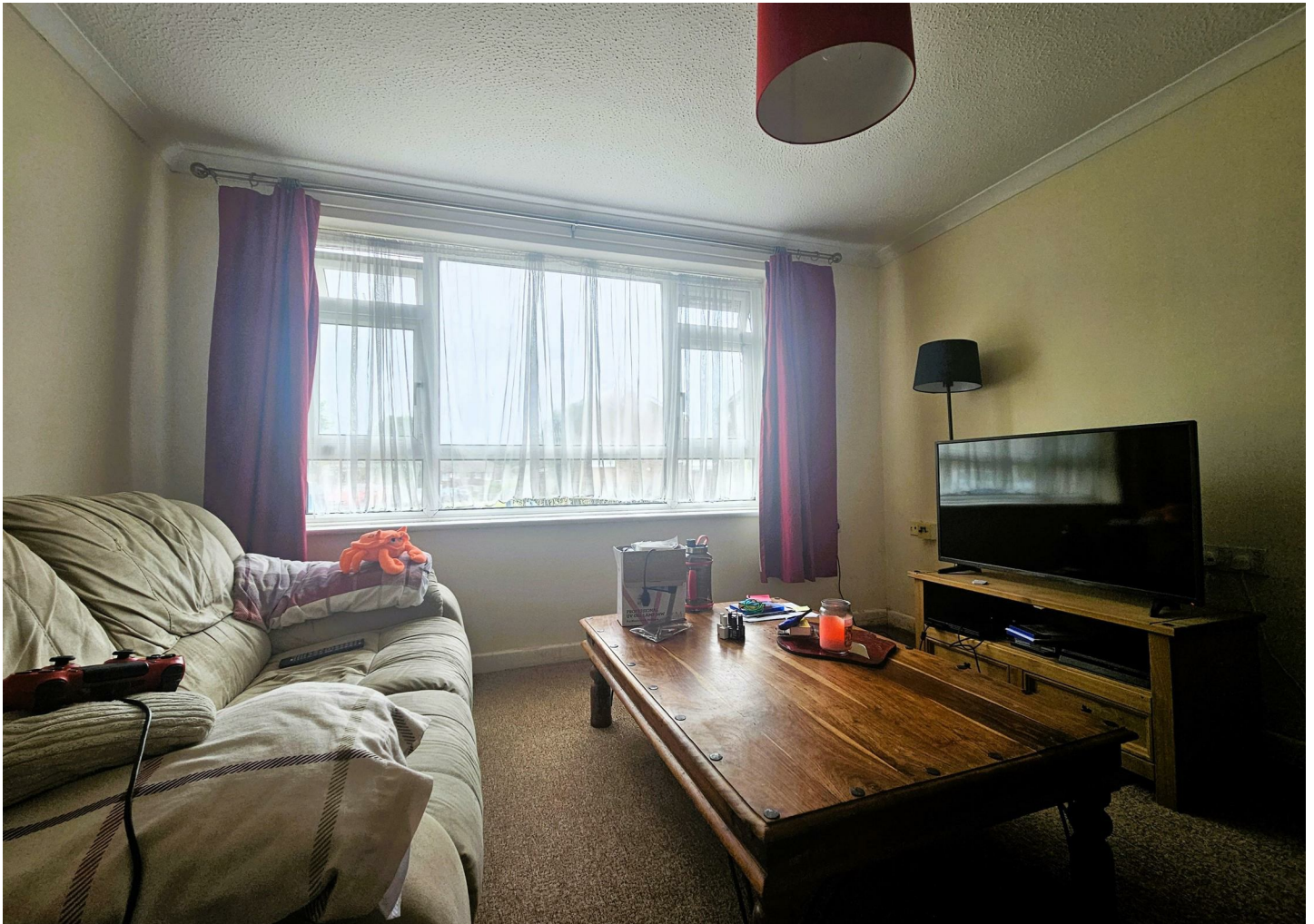
Aspire Residential is delighted to offer a ground floor apartment situated in Lancing. The property comprises one double bedroom, modern kitchen, living room, bathroom and at home office/storage room. The apartment is unfurnished and available from late October 2025.

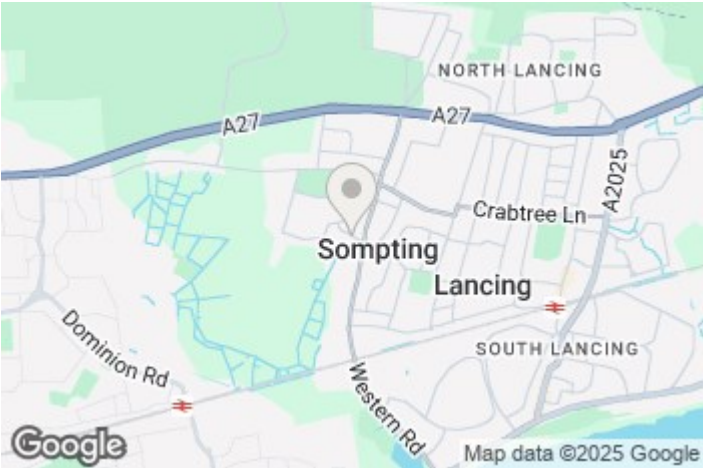


Council Tax Band: A

- *Open Day Saturday 11th October*
- Ground Floor Purpose Built Flat
- Available Late October

- One Double Bedroom
- Close to local shops and transport links
- EPC - D





EPC Rating:

Energy Efficiency Rating		
	Current	Potential
Very energy efficient - lower running costs		
(92 plus) A		
(81-91) B		
(69-80) C		
(55-68) D		
(39-54) E		
(21-38) F		
(1-20) G		
Not energy efficient - higher running costs		
England & Wales	EU Directive 2002/91/EC	

Aspire Residential | Goring-by-Sea

28 Goring Road
Goring-by-Sea
Worthing
BN12 4AD
Telephone: 01903 259 961
Email: info@aspireresidential.co.uk



Aspire Residential | Durrington / Salvington

5 Selden Parade
Salvington Road
Worthing
BN13 2HL
Telephone: 01903 910 424
Email: enquiries@aspireresidential.co.uk

Aspire Residential and Aspire Residential Estate Agents are trading names of Aspire Residential Sales Limited, a Company registered in England and Wales with registration number 11659289. VAT No. 317450614

IMPORTANT NOTICE TO PURCHASERS: We endeavour to make our sales particulars accurate and reliable, however, they do not constitute or form part of an offer or any contract and none is to be relied upon as statements of representation or fact. The services, systems and appliances listed in this specification have not been tested by us and no guarantees as to their operating ability or efficiency are given. All measurements have been taken as a guide to prospective buyers only, and are not precise. If you require clarification or further information on any points, please contact us, especially if you are traveling some distance to view.