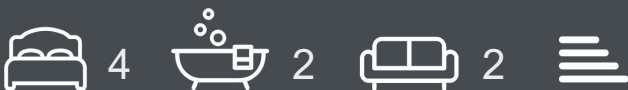


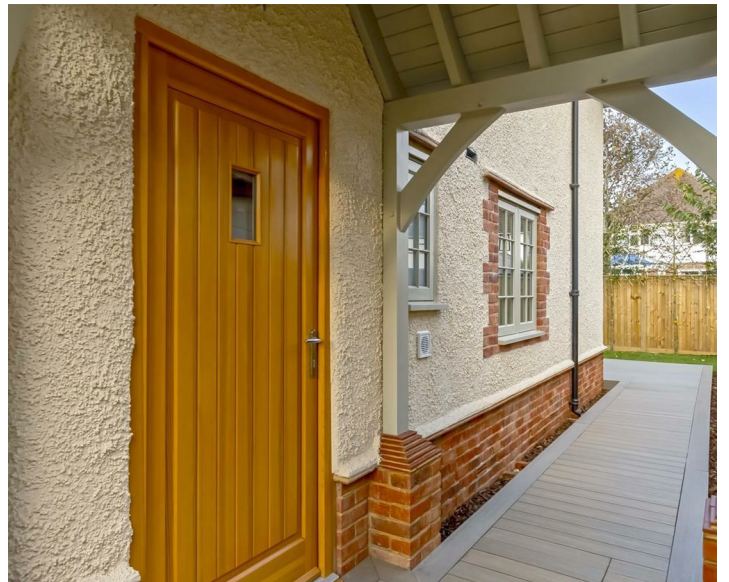
East Avenue, Goring-By-Sea, BN12 4DD

Asking Price £695,000

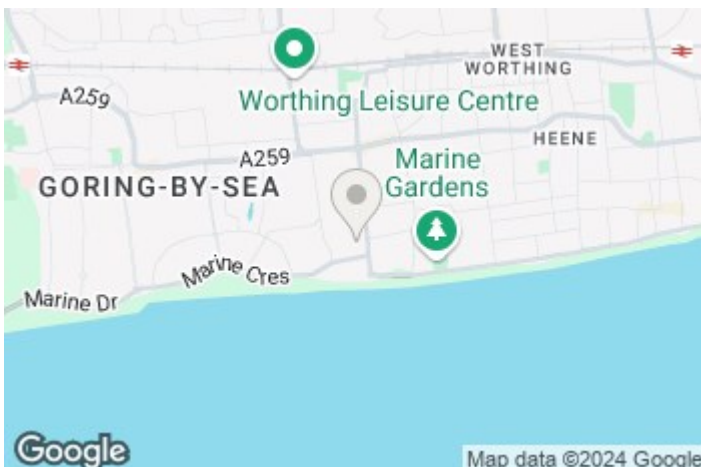
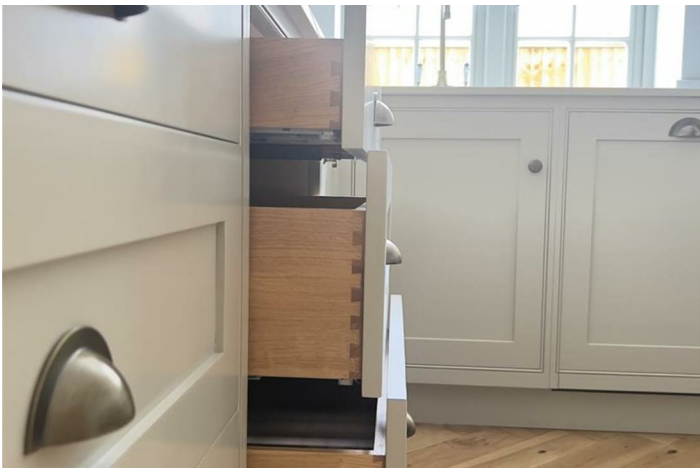
Aspire Residential are delighted to bring to the market this statement new build home, located in a superb and quiet part of Goring By Sea. No expense has been spared by the developers, having chosen only the finest bespoke materials for the build. The kitchen and wardrobes have been provided and designed by the critically acclaimed 'White Sheep Studio'. High quality appliances have been provided throughout which include, but are not limited to; dish washer, electric oven, combination microwave oven, induction hob, canopy extractor fan and a stainless steel American fridge freezer complete with ice machine and cold filtered drinking water. The location offers a fantastic lifestyle, not only providing quiet living, but also the ability to get to the seafront, local shops and wine bars within minutes. The property benefits from two private off road parking spaces with electric car charging points.



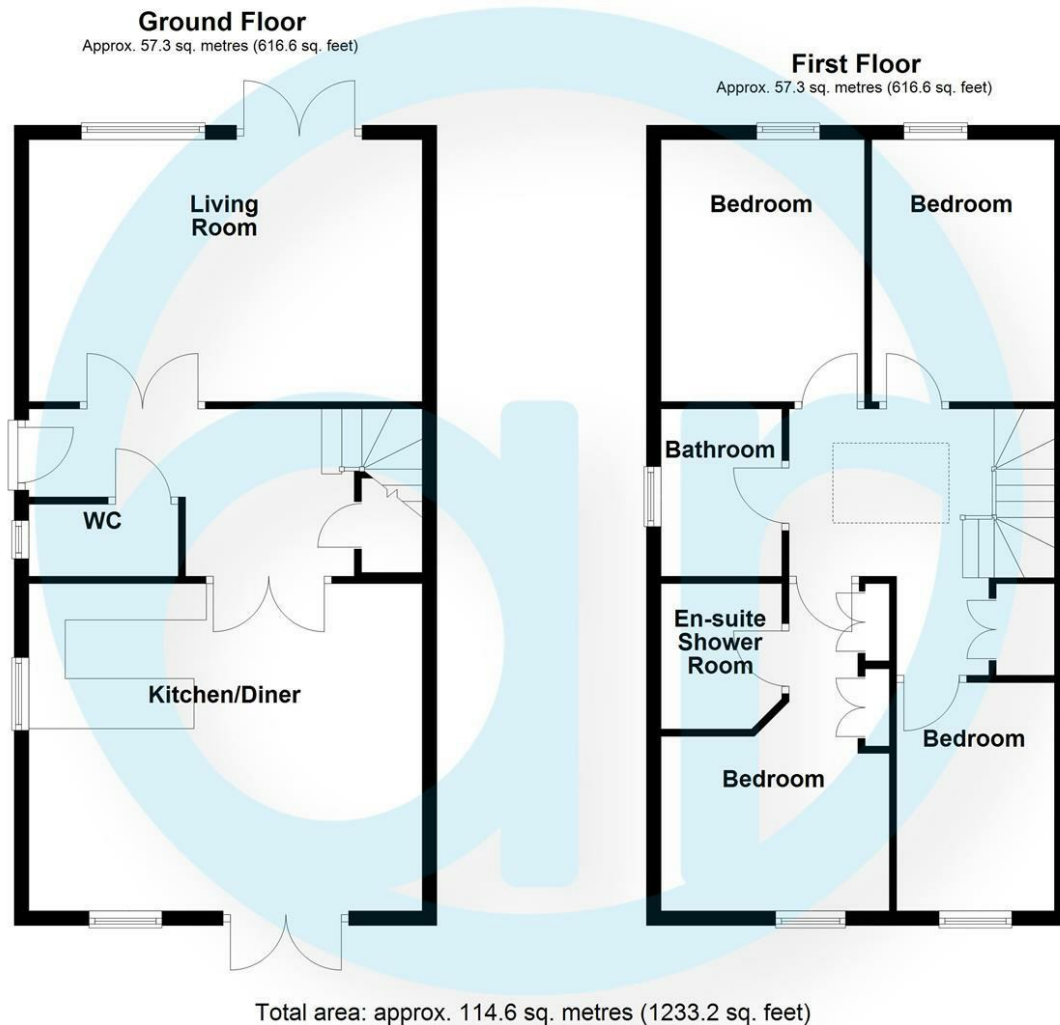
- New Home Guarantee
- Luxurious herring bone real oak flooring throughout the ground floor.
- Handcrafted bricks and clay roof tiles
- Two private off road parking spaces with electric car charging supply
- Farrow and ball colours throughout
- High levels of insulation with a forecasted B energy rating
- Quality Dale Joinery wooden windows and doors
- Panned oak internal doors complete with bronze ironmongery
- Well landscaped externals with Neo Timber Advance composite decking, natural stone paving and a large range of shrubs and trees
- Superbly located, only short walk from the Seafront and local Yacht Club



Goring-by-Sea, a coastal suburb of Worthing, England, harmoniously combines seaside tranquillity and modern living. Nestled between the South Downs National Park and the English Channel, the area offers stunning views of the countryside and coastline. Characterised by tree-lined streets, diverse housing options, and easy beach access, Goring-by-Sea provides a peaceful retreat with well-regarded schools, shopping, and dining. Active community events and a strong neighbourhood spirit contribute to the area's charm, making Goring-by-Sea an idyllic destination that seamlessly blends the beauty of nature with suburban convenience.



EPC Rating:



**Aspire Residential | Goring-by-Sea**

28 Goring Road  
Goring-by-Sea  
Worthing  
BN12 4AD  
Telephone: 01903 259 961  
Email: [info@aspireresidential.co.uk](mailto:info@aspireresidential.co.uk)



**Aspire Residential | Durrington / Salvington**

5 Selden Parade  
Salvington Road  
Worthing  
BN13 2HL  
Telephone: 01903 910 424  
Email: [enquiries@aspireresidential.co.uk](mailto:enquiries@aspireresidential.co.uk)

Aspire Residential and Aspire Residential Estate Agents are trading names of Aspire Residential Sales Limited, a Company registered in England and Wales with registration number 11659289. VAT No. 317450614

**IMPORTANT NOTICE TO PURCHASERS:** We endeavour to make our sales particulars accurate and reliable, however, they do not constitute or form part of an offer or any contract and none is to be relied upon as statements of representation or fact. The services, systems and appliances listed in this specification have not been tested by us and no guarantees as to their operating ability or efficiency are given. All measurements have been taken as a guide to prospective buyers only, and are not precise. If you require clarification or further information on any points, please contact us, especially if you are traveling some distance to view.