



Heene Road, Worthing, BN11 4PN

Asking Price £215,000

Aspire Residential are delighted to offer to the market this spacious top floor one bedroom apartment with a large south westerly roof terrace which offers views across Worthing. The property comprises: one double bedroom, living/dining room, kitchen, bathroom, gas central heating and an allocated parking space. The property will be sold with a new lease upon completion.



Council Tax Band: A

- Upper floor apartment
- One double bedroom
- Short walk to the town centre
- Allocated Parking
- Maintenance - £1015 per 6 months

- South/West aspect roof terrace
- New lease upon completion
- EPC Rating C
- Vacant possession if required
- Internal lift



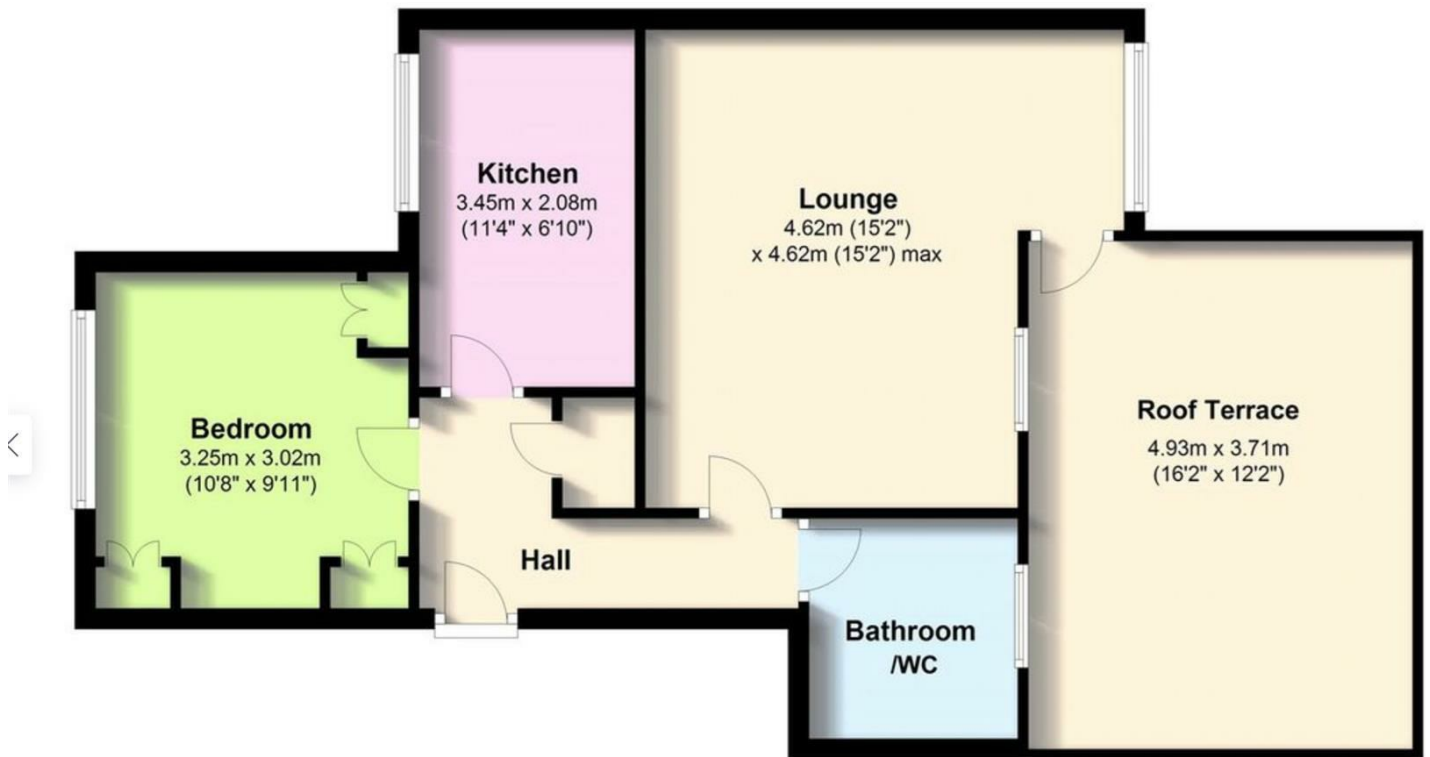
Worthing, a picturesque seaside town on the south coast of England, exudes a unique charm with its blend of Victorian elegance and contemporary vitality. Known for its extensive pebble beach, historic pier, and well-maintained promenade, Worthing offers residents and visitors alike a captivating coastal experience. The town's vibrant cultural scene is enriched by theatres, art galleries, and frequent events, creating a lively atmosphere. With its beautiful parks, such as Beach House Park and Highdown Gardens, Worthing provides green spaces for leisure and relaxation. The town's bustling town centre features a diverse array of shops, restaurants, and entertainment venues, contributing to its reputation as a welcoming and thriving community. Worthing's accessibility, rich history, and scenic beauty make it a sought-after destination for those seeking a coastal haven with a perfect blend of tradition and modernity.



EPC Rating:

C

Energy Efficiency Rating		Current	Potential
Very energy efficient - lower running costs			
(92 plus) A			
(81-91) B			
(69-80) C		72	72
(55-68) D			
(39-54) E			
(21-38) F			
(1-20) G			
Not energy efficient - higher running costs			
<b>England &amp; Wales</b>		EU Directive 2002/91/EC	



Whilst every attempt has been made to ensure the accuracy of the floor plan contained here, measurements of doors, windows, rooms and any other items are approximate and no responsibility is taken for any error, omission, or mis-statement. This plan is for illustrative purposes only and should be used as such by any prospective purchaser.

**Aspire Residential | Goring-by-Sea**

28 Goring Road  
 Goring-by-Sea  
 Worthing  
 BN12 4AD  
 Telephone: 01903 259 961  
 Email: [info@aspireresidential.co.uk](mailto:info@aspireresidential.co.uk)



**Aspire Residential | Durrington / Salvington**

5 Selden Parade  
 Salvington Road  
 Worthing  
 BN13 2HL  
 Telephone: 01903 910 424  
 Email: [enquiries@aspireresidential.co.uk](mailto:enquiries@aspireresidential.co.uk)

Aspire Residential and Aspire Residential Estate Agents are trading names of Aspire Residential Sales Limited, a Company registered in England and Wales with registration number 11659289. VAT No. 317450614

**IMPORTANT NOTICE TO PURCHASERS:** We endeavour to make our sales particulars accurate and reliable, however, they do not constitute or form part of an offer or any contract and none is to be relied upon as statements of representation or fact. The services, systems and appliances listed in this specification have not been tested by us and no guarantees as to their operating ability or efficiency are given. All measurements have been taken as a guide to prospective buyers only, and are not precise. If you require clarification or further information on any points, please contact us, especially if you are traveling some distance to view.