

## Torrige Close, Worthing, BN13 3PH

Asking Price £325,000

Being sold with no onward chain and having just undergone an extensive renovation is this immaculate three bedroom terrace home that now benefits from a brand new modern fitted kitchen and a new stylish bathroom suite. Further advantages to this wonderful home include upgrades to both the electrical and gas central heating system. Externally to the rear you will find a private garden with both lawn and patio areas.

- Being sold with no onward chain
- South facing garden to the rear
- Spacious and well proportioned accommodation
- Brand new kitchen and bathroom
- New herringbone wooden floor throughout
- Immaculate condition following full renovation
- Integrated appliances
- Catchment area for sought after local schools
- Upgrades to gas central heating system and electrics
- Close to local shops and amenities



Worthing, a picturesque seaside town on the south coast of England, exudes a unique charm with its blend of Victorian elegance and contemporary vitality. Known for its extensive pebble beach, historic pier, and well-maintained promenade, Worthing offers residents and visitors alike a captivating coastal experience. The town's vibrant cultural scene is enriched by theatres, art galleries, and frequent events, creating a lively atmosphere. With its beautiful parks, such as Beach House Park and Highdown Gardens, Worthing provides green spaces for leisure and relaxation. The town's bustling town centre features a diverse array of shops, restaurants, and entertainment venues, contributing to its reputation as a welcoming and thriving community. Worthing's accessibility, rich history, and scenic beauty make it a sought-after destination for those seeking a coastal haven with a perfect blend of tradition and modernity.



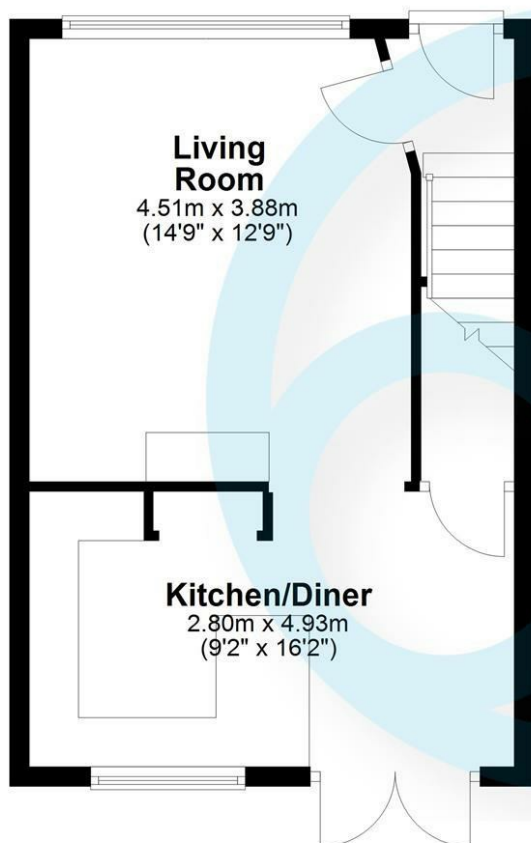
EPC Rating:

C

Energy Efficiency Rating		Current	Potential
Very energy efficient - lower running costs			
(92 plus) A			
(81-91) B			88
(69-80) C		70	
(55-68) D			
(39-54) E			
(21-38) F			
(1-20) G			
Not energy efficient - higher running costs			
<b>England &amp; Wales</b>		EU Directive 2002/91/EC	

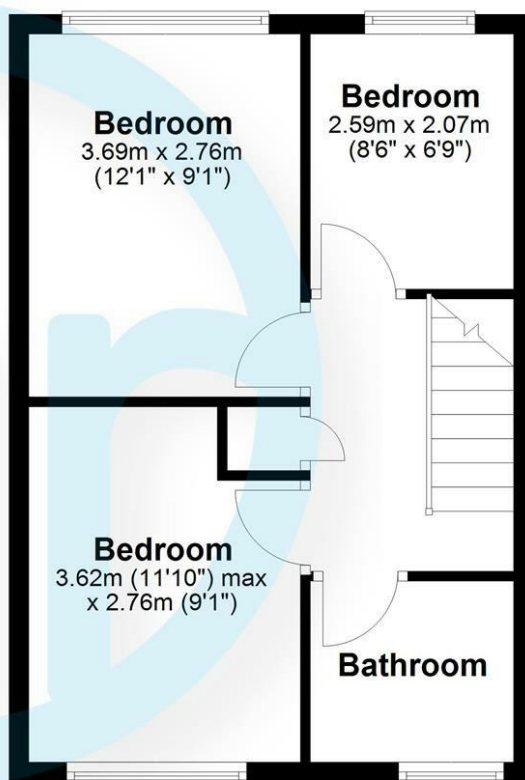
## Ground Floor

Approx. 36.5 sq. metres (392.9 sq. feet)



## First Floor

Approx. 36.5 sq. metres (392.9 sq. feet)



Total area: approx. 73.0 sq. metres (785.9 sq. feet)

### Aspire Residential | Goring-by-Sea

28 Goring Road  
Goring-by-Sea  
Worthing  
BN12 4AD  
Telephone: 01903 259 961  
Email: [info@aspireresidential.co.uk](mailto:info@aspireresidential.co.uk)



### Aspire Residential | Durrington / Salvington

5 Selden Parade  
Salvington Road  
Worthing  
BN13 2HL  
Telephone: 01903 910 424  
Email: [enquiries@aspireresidential.co.uk](mailto:enquiries@aspireresidential.co.uk)

Aspire Residential and Aspire Residential Estate Agents are trading names of Aspire Residential Sales Limited, a Company registered in England and Wales with registration number 11659289. VAT No. 317450614

IMPORTANT NOTICE TO PURCHASERS: We endeavour to make our sales particulars accurate and reliable, however, they do not constitute or form part of an offer or any contract and none is to be relied upon as statements of representation or fact. The services, systems and appliances listed in this specification have not been tested by us and no guarantees as to their operating ability or efficiency are given. All measurements have been taken as a guide to prospective buyers only, and are not precise. If you require clarification or further information on any points, please contact us, especially if you are traveling some distance to view.