



Gorse Avenue, Worthing

£995 Per Month

Appointments Now Fully Booked

Aspire Residential is delighted to offer to market this spacious ground floor apartment. This property is ideally located in a quiet road but still offers local shops and a popular family pub. Internally the property offers one double bedroom, living room, kitchen, W/C, bathroom and has the external benefit of a private rear garden and garage.

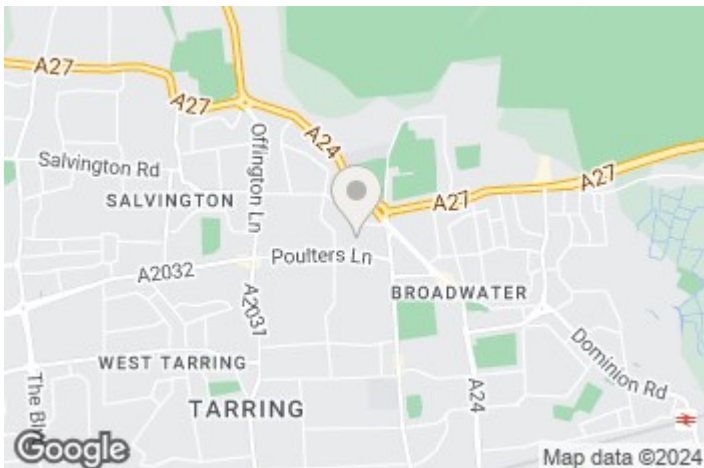
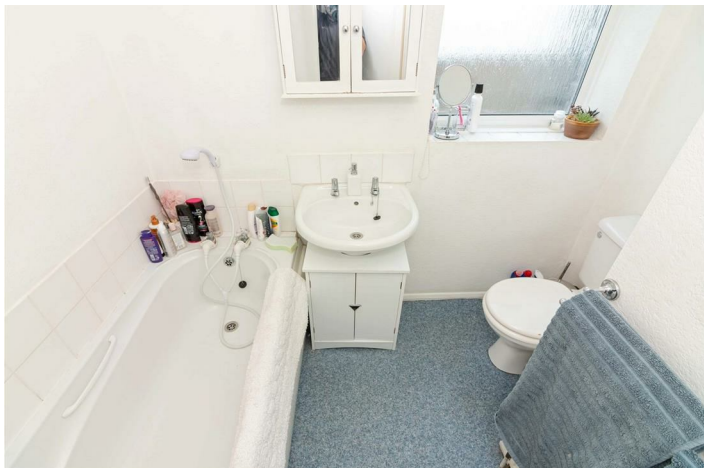


Council Tax Band:

- *Appointments Now Fully Booked*
- Private Rear Garden
- EPC - D
- Easy access to A27

- Ground Floor Apartment
- Quiet Location
- Garage
- Available Early May



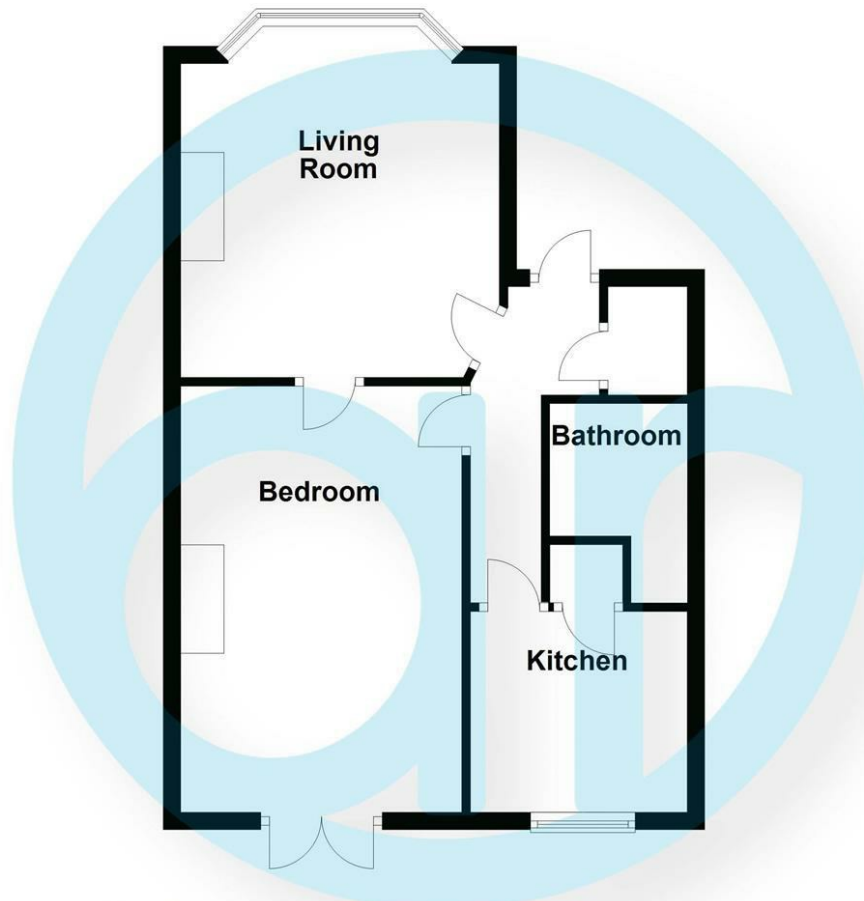


EPC Rating:

Energy Efficiency Rating		
	Current	Potential
Very energy efficient - lower running costs		
(92 plus) A		
(81-91) B		
(69-80) C		
(55-68) D		
(39-54) E		
(21-38) F		
(1-20) G		
Not energy efficient - higher running costs		
England & Wales	EU Directive 2002/91/EC	

Floor Plan

Approx. 45.3 sq. metres (487.2 sq. feet)



Total area: approx. 45.3 sq. metres (487.2 sq. feet)

Aspire Residential | Goring-by-Sea

28 Goring Road
Goring-by-Sea
Worthing
BN12 4AD
Telephone: 01903 259 961
Email: info@aspireresidential.co.uk



Aspire Residential | Durrington / Salvington

5 Selden Parade
Salvington Road
Worthing
BN13 2HL
Telephone: 01903 910 424
Email: enquiries@aspireresidential.co.uk

Aspire Residential and Aspire Residential Estate Agents are trading names of Aspire Residential Sales Limited, a Company registered in England and Wales with registration number 11659289. VAT No. 317450614

IMPORTANT NOTICE TO PURCHASERS: We endeavour to make our sales particulars accurate and reliable, however, they do not constitute or form part of an offer or any contract and none is to be relied upon as statements of representation or fact. The services, systems and appliances listed in this specification have not been tested by us and no guarantees as to their operating ability or efficiency are given. All measurements have been taken as a guide to prospective buyers only, and are not precise. If you require clarification or further information on any points, please contact us, especially if you are traveling some distance to view.