

Marine Parade, Worthing, BN13 3QG

Asking Price £950,000

Internally the property offers multiple guest rooms each with it's own en suite, eleven of which can be let in accordance with the licence agreement. Additionally, the top floor offers owners accommodation which compromises of two bedrooms, both with an en suite and an open plan kitchen/lounge with direct sea views. Further accommodation includes a private bar, dining area, a service kitchen and a double length garage.

- ** Planning Granted For 4 Luxury Flats **
- Idyllic seafront location
- Accommodation arranged over four floors
- Guest accommodation with separate owners accommodation
- Double Length Garage

- Currently run as a successful Guest House
- Uninterrupted views of Worthing Pier and the sea beyond
- Private bar opening onto a terrace overlooking the beach
- Finished to a high standard throughout
- Commercial EPC Rating - D



PLAN VIEW DESIGN

MARINE VIEW

Ground Floor

1:100

RY

11/08/2021

009 02



Worthing, a picturesque seaside town on the south coast of England, exudes a unique charm with its blend of Victorian elegance and contemporary vitality. Known for its extensive pebble beach, historic pier, and well-maintained promenade, Worthing offers residents and visitors alike a captivating coastal experience. The town's vibrant cultural scene is enriched by theatres, art galleries, and frequent events, creating a lively atmosphere. With its beautiful parks, such as Beach House Park and Highdown Gardens, Worthing provides green spaces for leisure and relaxation. The town's bustling town centre features a diverse array of shops, restaurants, and entertainment venues, contributing to its reputation as a welcoming and thriving community. Worthing's accessibility, rich history, and scenic beauty make it a sought-after destination for those seeking a coastal haven with a perfect blend of tradition and modernity.

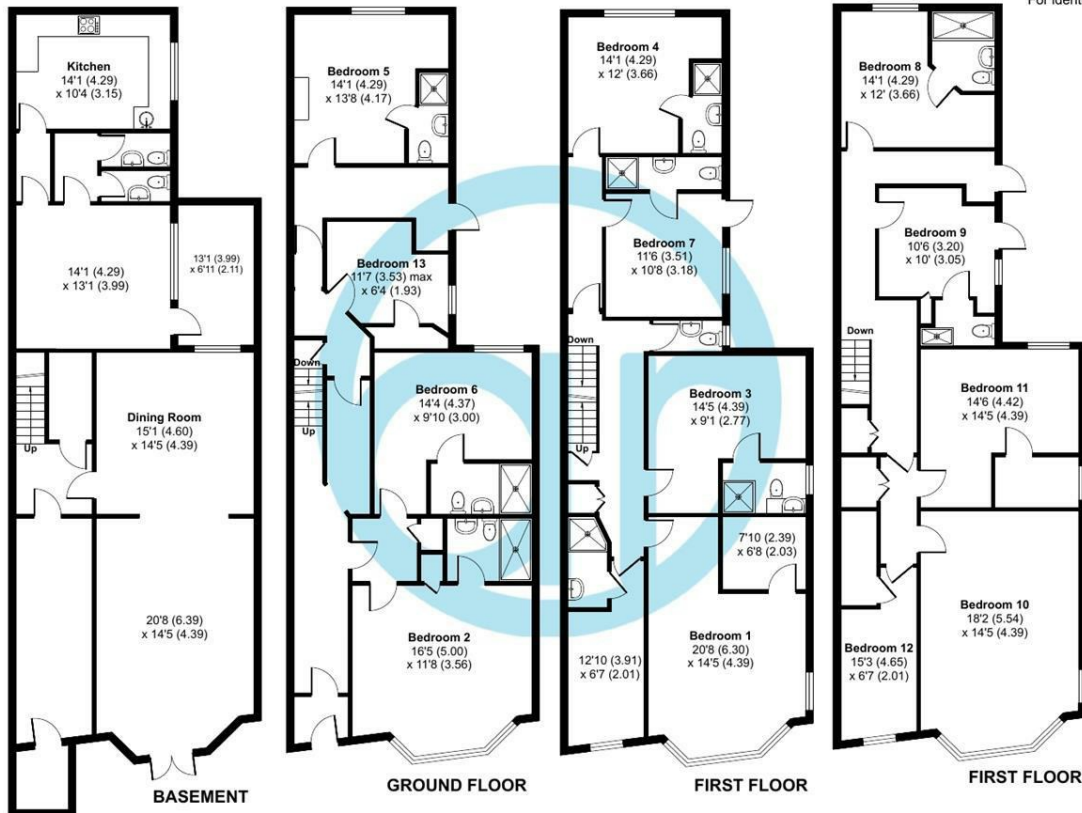


EPC Rating:

Marine Parade, Worthing, BN11

Approximate Area = 4998 sq ft / 464.3 sq m

For identification only - Not to scale



Floor plan produced in accordance with RICS Property Measurement Standards incorporating International Property Measurement Standards (IPMS2 Residential). © nichcom 2024. Produced for Aspire Residential Real Estate. REF: 1103547

Aspire Residential | Goring-by-Sea

28 Goring Road
Goring-by-Sea
Worthing
BN12 4AD
Telephone: 01903 259 961
Email: info@aspireresidential.co.uk



Aspire Residential | Durrington / Salvington

5 Selden Parade
Salvington Road
Worthing
BN13 2HL
Telephone: 01903 910 424
Email: enquiries@aspireresidential.co.uk

Aspire Residential and Aspire Residential Estate Agents are trading names of Aspire Residential Sales Limited, a Company registered in England and Wales with registration number 11659289. VAT No. 317450614

IMPORTANT NOTICE TO PURCHASERS: We endeavour to make our sales particulars accurate and reliable, however, they do not constitute or form part of an offer or any contract and none is to be relied upon as statements of representation or fact. The services, systems and appliances listed in this specification have not been tested by us and no guarantees as to their operating ability or efficiency are given. All measurements have been taken as a guide to prospective buyers only, and are not precise. If you require clarification or further information on any points, please contact us, especially if you are traveling some distance to view.