



Exmoor Drive, Worthing, BN13 2JL

Offers Over £250,000

A two bedroom duplex maisonette with bright, spacious accommodation arranged over two floors. This wonderful property has been presented to a high standard throughout by the current owners including a modern fitted kitchen and a stylish family bathroom. Further advantages including a private balcony over looking the communal gardens, a single garage in a nearby block and further residents parking.

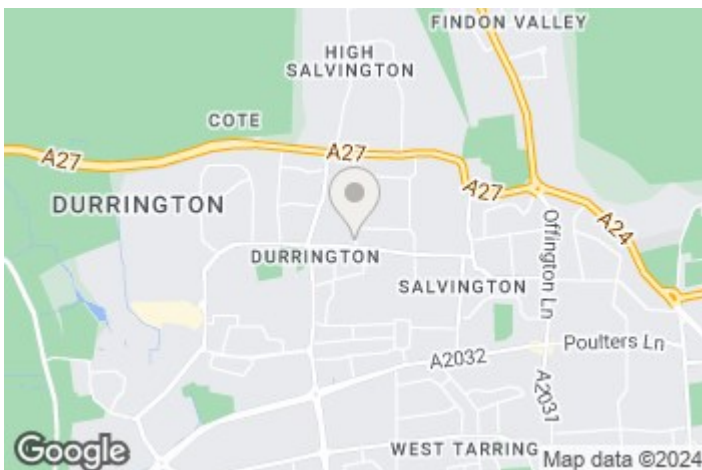
- Two bedroom duplex maisonette
- Finished to a high standard throughout
- Garage and off road parking
- Convenient location close to shops and amenities
- Service and Maintenance: Approx. £183 per month

- Private balcony overlooking the communal gardens
- Modern, stylish Kitchen and Bathroom
- Catchment area for sought after local schools
- Leasehold with 125 years remaining
- Ground Rent: £100 per annum



Durrington's central location ensures easy access to Worthing's bustling town centre and the beautiful coastline, making it an ideal choice for those seeking a well-balanced and connected lifestyle within the larger Worthing community.

Worthing, a picturesque seaside town on the south coast of England, exudes a unique charm with its blend of Victorian elegance and contemporary vitality. Known for its extensive pebble beach, historic pier, and well-maintained promenade, Worthing offers residents and visitors alike a captivating coastal experience. The town's vibrant cultural scene is enriched by theatres, art galleries, and frequent events, creating a lively atmosphere. With its beautiful parks, such as Beach House Park and Highdown Gardens, Worthing provides green spaces for leisure and relaxation. The town's bustling town centre features a diverse array of shops, restaurants, and entertainment venues, contributing to its reputation as a welcoming and thriving community. Worthing's accessibility, rich history, and scenic beauty make it a sought-after destination for those seeking a coastal haven with a perfect blend of tradition and modernity.



EPC Rating:

C

Energy Efficiency Rating		Current	Potential
Very energy efficient - lower running costs			
(92 plus) A			
(81-91) B			
(69-80) C		76	76
(55-68) D			
(39-54) E			
(21-38) F			
(1-20) G			
Not energy efficient - higher running costs			
England & Wales		EU Directive 2002/91/EC	

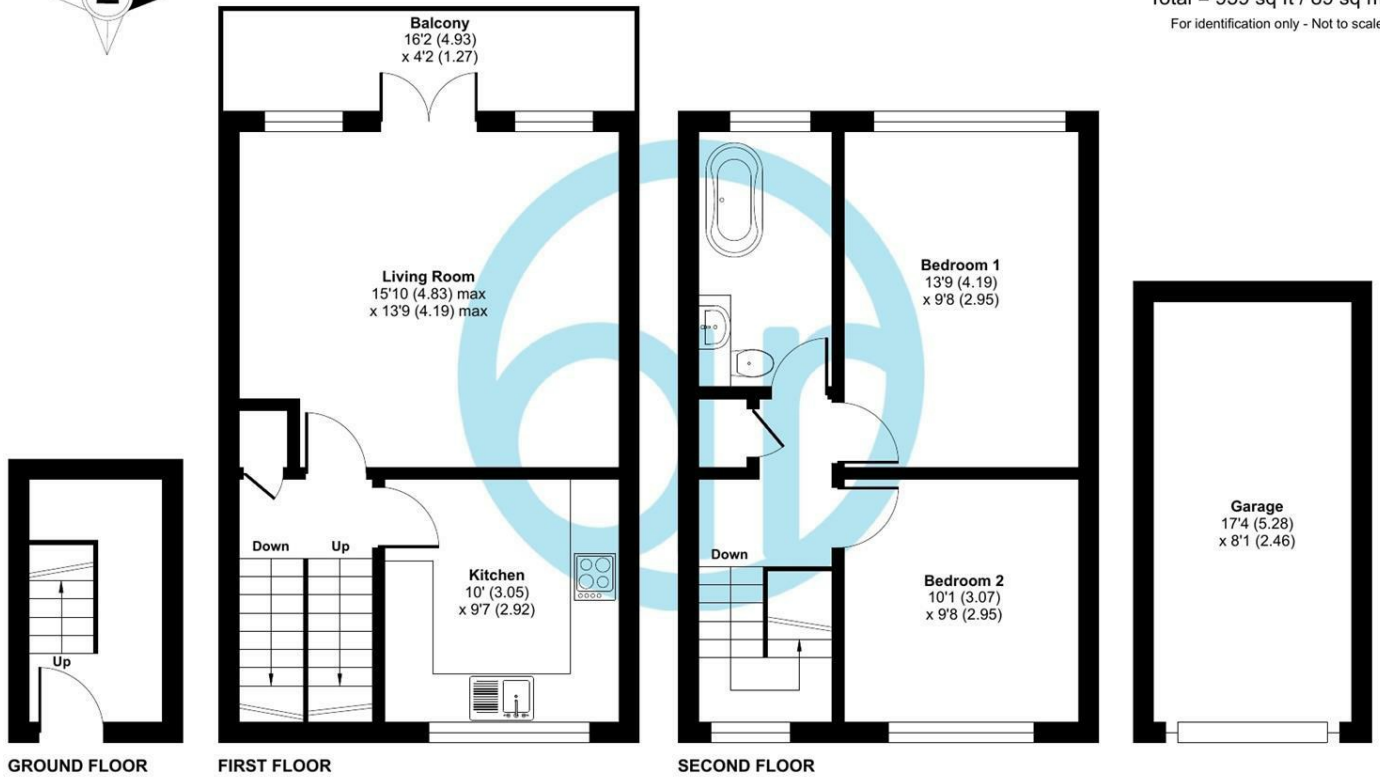
Exmoor Drive, Worthing, BN13

Approximate Area = 817 sq ft / 75.9 sq m

Garage = 142 sq ft / 13.1 sq m

Total = 959 sq ft / 89 sq m

For identification only - Not to scale



Floor plan produced in accordance with RICS Property Measurement Standards incorporating International Property Measurement Standards (IPMS2 Residential). © nichecom 2024. Produced for Aspire Residential Real Estate. REF: 1104705

Aspire Residential | Goring-by-Sea

28 Goring Road
Goring-by-Sea
Worthing
BN12 4AD
Telephone: 01903 259 961
Email: info@aspireresidential.co.uk



Aspire Residential | Durrington / Salvington

5 Selden Parade
Salvington Road
Worthing
BN13 2HL
Telephone: 01903 910 424
Email: enquiries@aspireresidential.co.uk

Aspire Residential and Aspire Residential Estate Agents are trading names of Aspire Residential Sales Limited, a Company registered in England and Wales with registration number 11659289. VAT No. 317450614

IMPORTANT NOTICE TO PURCHASERS: We endeavour to make our sales particulars accurate and reliable, however, they do not constitute or form part of an offer or any contract and none is to be relied upon as statements of representation or fact. The services, systems and appliances listed in this specification have not been tested by us and no guarantees as to their operating ability or efficiency are given. All measurements have been taken as a guide to prospective buyers only, and are not precise. If you require clarification or further information on any points, please contact us, especially if you are traveling some distance to view.