



3 Loanhead Crescent

, Motherwell, ML1 5AW

Offers over £160,000

An extremely spacious and modern semi detached villa, situated within lovely landscaped gardens and situated in a popular location in Newarthill.

The accommodation comprises reception hall, bright lounge, great sized modern dining kitchen with integrated fridge, freezer, oven, microwave, hob and cooker hood, 3 well proportioned double bedrooms, bathroom and immaculate shower room.

Further benefits include double glazing and gas central heating.

There are well maintained gardens to front and rear, the rear with level lawn and a spacious decked area plus a driveway to side providing ample off street parking.

EPC D.

Newarthill lies to the North of Motherwell, a great commuter area serving the whole of central Scotland with good road networks including the M8 and M74 motorways nearby. There is also a local train station, Carfin, not far from the property. Good amenities and facilities are close by, including an excellent 18 hole golf course and new leisure complex, newly opened Motherwell college, excellent schools to both Primary and secondary levels and a great variety of shops and retail parks.

- Immaculate Semi Detached Family Villa
- Modern Fitted Kitchen
- Three Bedrooms
- Bathroom
- Shower Room
- Landscaped Gardens
- Driveway

Viewing

Please contact our Pomphreys Properties Ltd Office on 01698373365 if you wish to arrange a viewing appointment for this property or require further information.



3



2



1



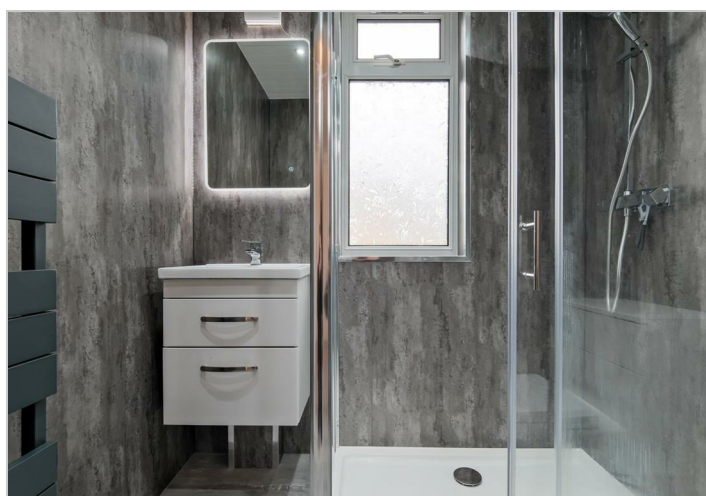
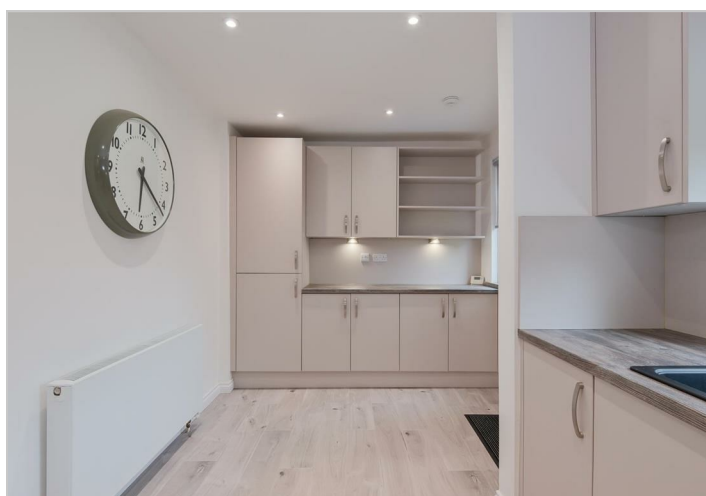
Floor Plan



Area Map



Energy Efficiency Graph



These particulars, whilst believed to be accurate are set out as a general outline only for guidance and do not constitute any part of an offer or contract. Intending purchasers should not rely on them as statements of representation of fact, but must satisfy themselves by inspection or otherwise as to their accuracy. No person in this firm's employment has the authority to make or give any representation or warranty in respect of the property.