



## 6A Kirkton Street

, Carlisle, ML8 4AB

**£750 Per month**

A prime retail unit formed over ground level, laid out to provide an open plan front area with a further three rooms, benefiting from a large double frontage to the busy street with a considerable amount of pedestrian footfall and high volume of daily passing traffic.

Toilet facilities to the rear of the unit.

Rateable Value £6,900

EPC D

- Busy Central location
- Double Frontage Unit
- Bright front sales area
- Three separate Rooms
- Toilet Facilities

### Viewing

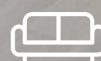
Please contact our Pomphreys Properties Ltd Office on 01698373365 if you wish to arrange a viewing appointment for this property or require further information.



0



0



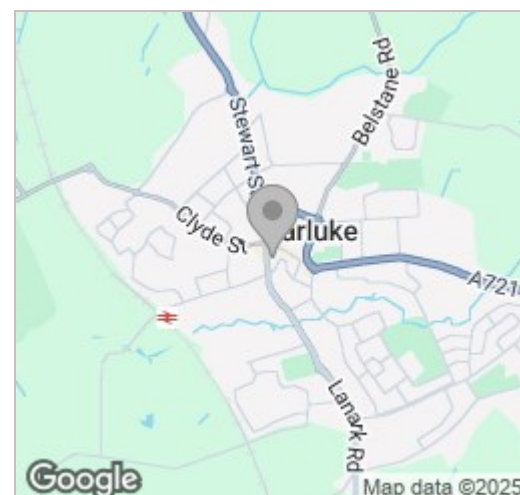
0



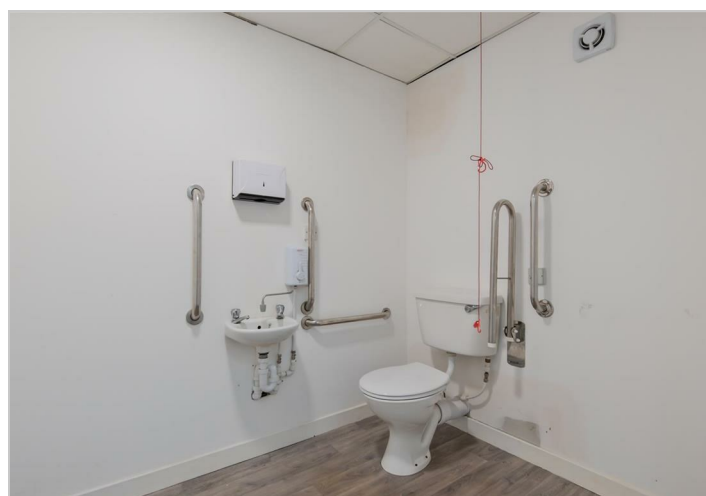
## Floor Plan



## Area Map



## Energy Efficiency Graph



These particulars, whilst believed to be accurate are set out as a general outline only for guidance and do not constitute any part of an offer or contract. Intending purchasers should not rely on them as statements of representation of fact, but must satisfy themselves by inspection or otherwise as to their accuracy. No person in this firm's employment has the authority to make or give any representation or warranty in respect of the property.