



18 Hemmingen Court

, Carlisle, ML8 5LX

Offers over £79,500

NEW TO THE MARKET!

A lovely ground floor apartment, an ideal first time buyer or buy to let opportunity, situated a few minutes walk from Carlisle Town Centre in a small quiet cul-de-sac.

The accommodation comprises entrance hall, bright lounge, fitted modern kitchen with all appliances, double bedroom, wet room and large storage cupboard.

Further benefits include double glazing, gas central heating, front garden, shared driveway and rear garden areas, private and communal.

EPC C.

Situated in Carlisle where all day-to-day requirements can be catered for, including various public transport links. For the commuter, the M8 and M74 motorway networks allows fast, easy access to Glasgow, Edinburgh and all points beyond.

- Cul-de-sac sited
- Shared Driveway
- Private and Communal Garden Areas
- Fitted Modern Kitchen with appliances
- Double Bedroom
- Wet Room
- Large Storage Cupboard
- Double Glazing & Gas Central Heating
- IDEAL BUY TO LET OR FIRST TIME BUYER OPPORTUNITY

Viewing

Please contact our Pomphreys Properties Ltd Office on 01698373365 if you wish to arrange a viewing appointment for this property or require further information.



1



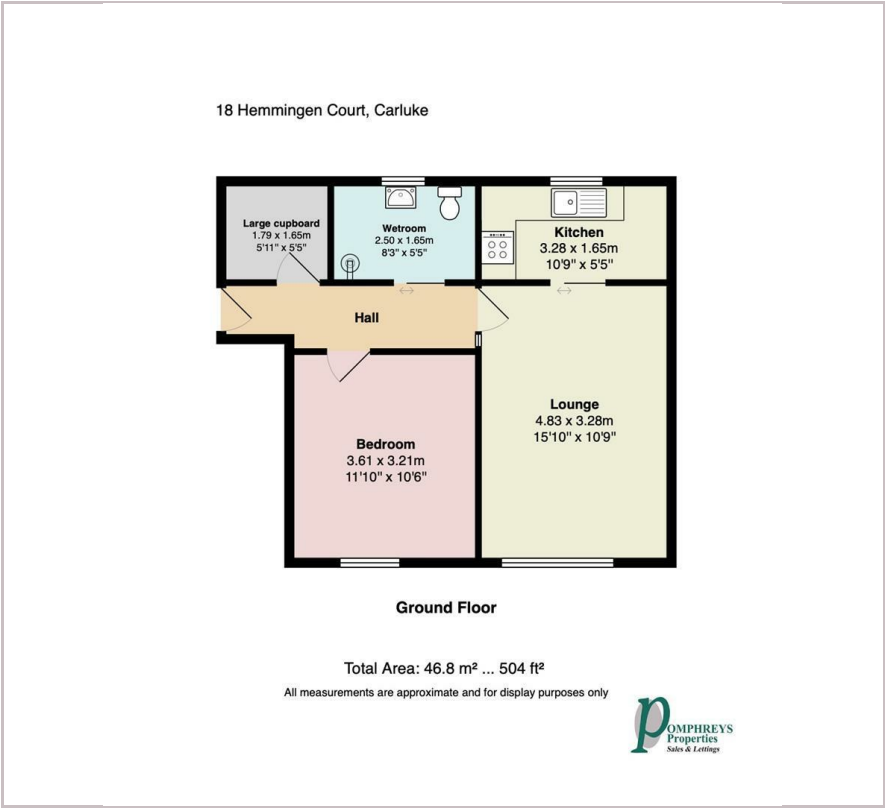
1



1



Floor Plan



Area Map



Energy Efficiency Graph



These particulars, whilst believed to be accurate are set out as a general outline only for guidance and do not constitute any part of an offer or contract. Intending purchasers should not rely on them as statements of representation of fact, but must satisfy themselves by inspection or otherwise as to their accuracy. No person in this firms employment has the authority to make or give any representation or warranty in respect of the property.