



22 Spey Court

, Newmains, ML2 9EE

Offers over £98,000

CLOSING DATE WEDNESDAY 26TH JUNE AT NOON

A spacious mid terraced property, positioned within a popular residential setting, cul-de-sac sited

Offering accommodation formed over two levels and comprises on the ground floor, entrance hallway, a spacious bright lounge with bay window and a modern dining kitchen. On the upper level are two double bedrooms (one double is currently partitioned into two singles) and family bathroom.

The property further benefits from gas central heating, double glazing, front garden with level lawn and a rear garden well maintained, landscaped and enclosed with lawn and paved seating area.

Spey Court is situated minutes to Newmains centre and also a short drive from Wishaw town centre with its many amenities and is ideally situated for commuting to Glasgow, Edinburgh and the central belt via both the M8 and M74 motorway networks.

EPC C

Viewing

Please contact our Pomphreys Properties Ltd Office on 01698373365 if you wish to arrange a viewing appointment for this property or require further information.

- Cul-de-sac sited
- Lovely modern mid terraced villa
- Dining Kitchen
- Enclosed Rear Garden



2



1



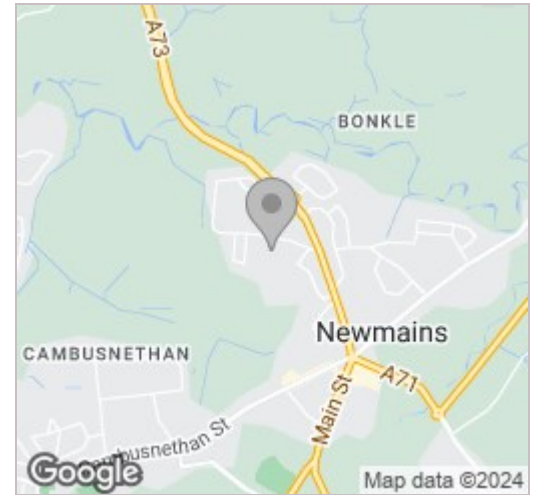
1



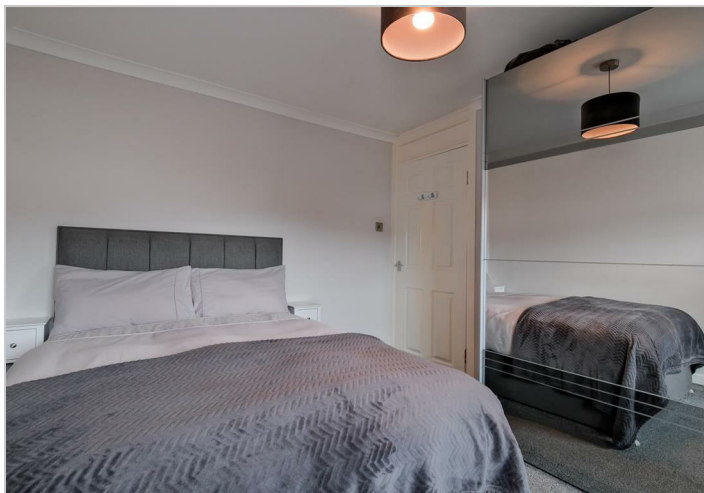
Floor Plan



Area Map



Energy Efficiency Graph



These particulars, whilst believed to be accurate are set out as a general outline only for guidance and do not constitute any part of an offer or contract. Intending purchasers should not rely on them as statements of representation of fact, but must satisfy themselves by inspection or otherwise as to their accuracy. No person in this firm's employment has the authority to make or give any representation or warranty in respect of the property.