



185 Main Street

, Wishaw, ML2 7NE

Offers over £53,000

A fantastic spacious upper flat, centrally located and ideal for the buy to let market or first time buyer!!

Comprising entrance hall, lounge with bay window, fitted modern kitchen, double bedroom and bathroom, this lovely flat must be internally viewed to appreciate the size of accommodation on offer here.

Further benefits include double glazing, electric central heating, communal garden and parking to rear.

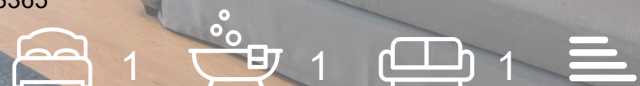
Situated on Wishaw Main Street within the Town Centre, where all day-to-day requirements can be catered for, from the commuting to Glasgow, Edinburgh and the central belt to all shopping and leisure pursuits with train and bus routes to hand.

EPC E

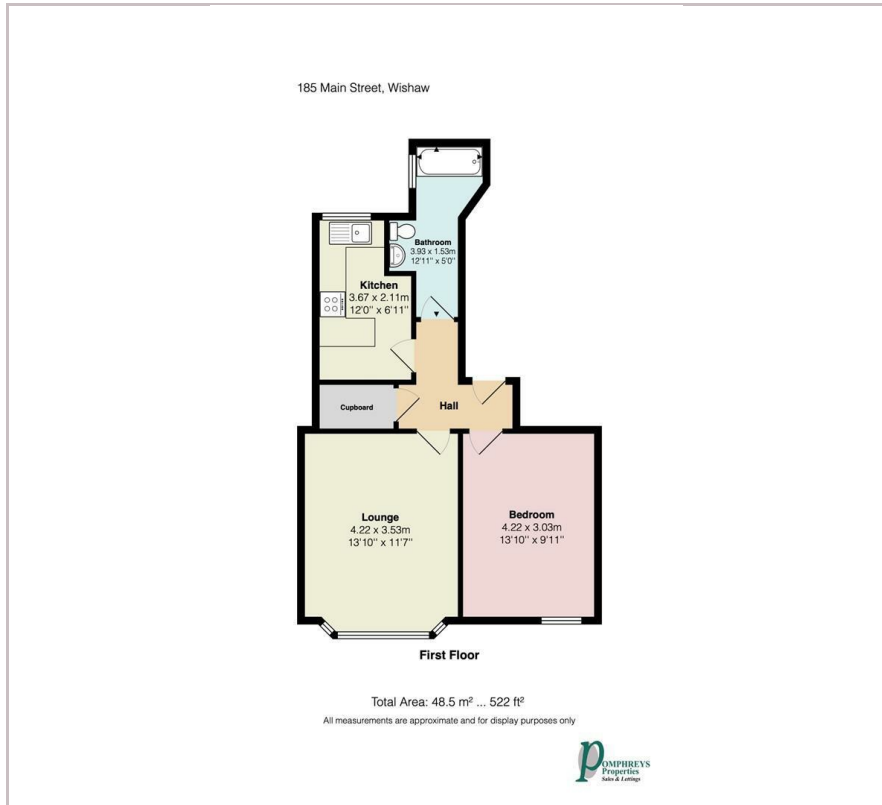
Viewing

Please contact our Pomphreys Properties Ltd Office on 01698373365 if you wish to arrange a viewing appointment for this property or require further information.

- Central Upper Flat
- Ideal for the First Time Buyer or Buy to Let Market!
- Double Bedroom
- Fitted Kitchen
- Lounge with Bay Window
- Parking to rear



Floor Plan



Area Map



Energy Efficiency Graph



These particulars, whilst believed to be accurate are set out as a general outline only for guidance and do not constitute any part of an offer or contract. Intending purchasers should not rely on them as statements of representation of fact, but must satisfy themselves by inspection or otherwise as to their accuracy. No person in this firm's employment has the authority to make or give any representation or warranty in respect of the property.