



## 11 Dimsdale Crescent

, Wishaw, ML2 8DR

**Offers over £113,000**

This rarely available, immaculate and extremely spacious end terraced villa situated within a popular and sought after estate in Wishaw.

Upkept to the highest of standards by the current owners, this property must be viewed internally to appreciate the style, size and quality of accommodation on offer.

The accommodation comprises reception hall, large bright lounge with dual aspects and ample space for dining, beautiful fitted dining kitchen, two double bedrooms and modern shower room.

The property is heated by a gas fired central heating system, is double glazed throughout and has a landscaped garden to front which is monoblocked to provide off street parking for a number of cars and a south facing large and private enclosed rear garden with paved patio and decking areas, ideal for entertaining!

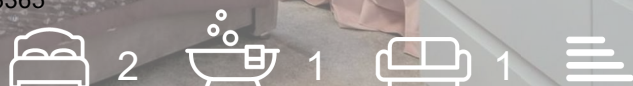
The property is located a few minutes from Wishaw town centre where all day-to-day requirements can be catered for, including various public transport links, sports facilities and schooling. For the commuter, the M8 and M74 motorway networks allow fast, easy access to Glasgow, Edinburgh and all points beyond

EPC D

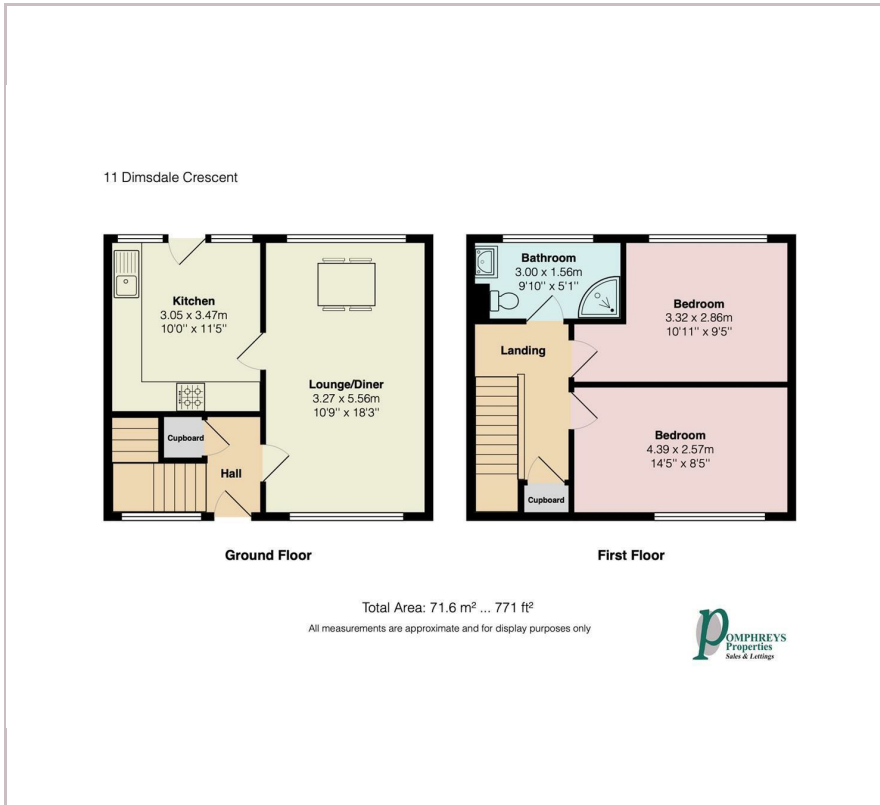
### Viewing

Please contact our Pomphreys Properties Ltd Office on 01698373365 if you wish to arrange a viewing appointment for this property or require further information.

- SPACIOUS AND IMMACULATE END TERRACED VILLA
- FAB DINING FITTED KITCHEN
- TWO DOUBLE BEDROOMS
- FAMILY BATHROOM
- SOUTH FACING LARGE REAR GARDEN
- AMPLE PARKING TO FRONT



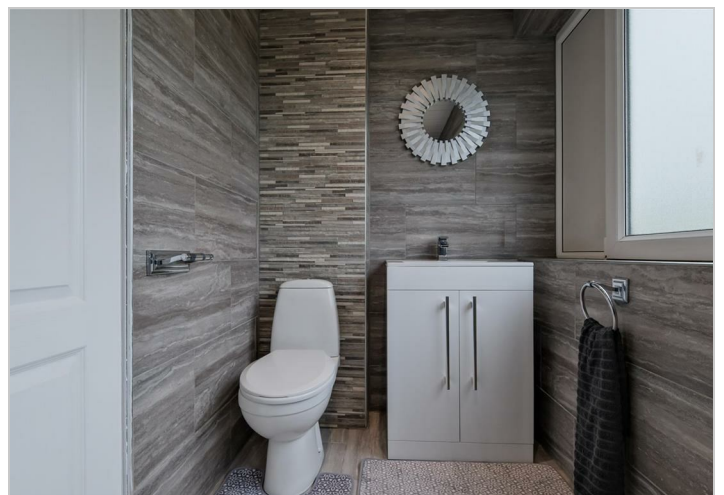
## Floor Plan



## Area Map



## Energy Efficiency Graph



These particulars, whilst believed to be accurate are set out as a general outline only for guidance and do not constitute any part of an offer or contract. Intending purchasers should not rely on them as statements of representation of fact, but must satisfy themselves by inspection or otherwise as to their accuracy. No person in this firm's employment has the authority to make or give any representation or warranty in respect of the property.