



171 Wishaw Road

Waterloo, Wishaw, ML2 8EN

Offers over £63,000

NEW TO THE MARKET!

An immaculate and deceptively spacious GROUND FLOOR APARTMENT situated within Waterloo, Wishaw.

Internal viewing is strongly advised to appreciate the accommodation on offer.

Comprising entrance vestibule, reception hallway, large lounge with ample space for dining, fitted kitchen, bright double bedroom with built in storage and shower room.

Further benefits include, double glazing, gas central heating and communal rear garden.

Wishaw Road is situated central in Waterloo, and a short drive from Wishaw town centre with its many amenities and is ideally situated for commuting to Glasgow, Edinburgh and the central belt via both the M8 and M74 motorway networks.

EPC C

Viewing

Please contact our Pomphreys Properties Ltd Office on 01698373365 if you wish to arrange a viewing appointment for this property or require further information.

- GROUND FLOOR APARTMENT
- Large lounge with ample space for dining
- Fitted modern kitchen
- Spacious double bedroom with built in storage
- Communal Rear Garden



1



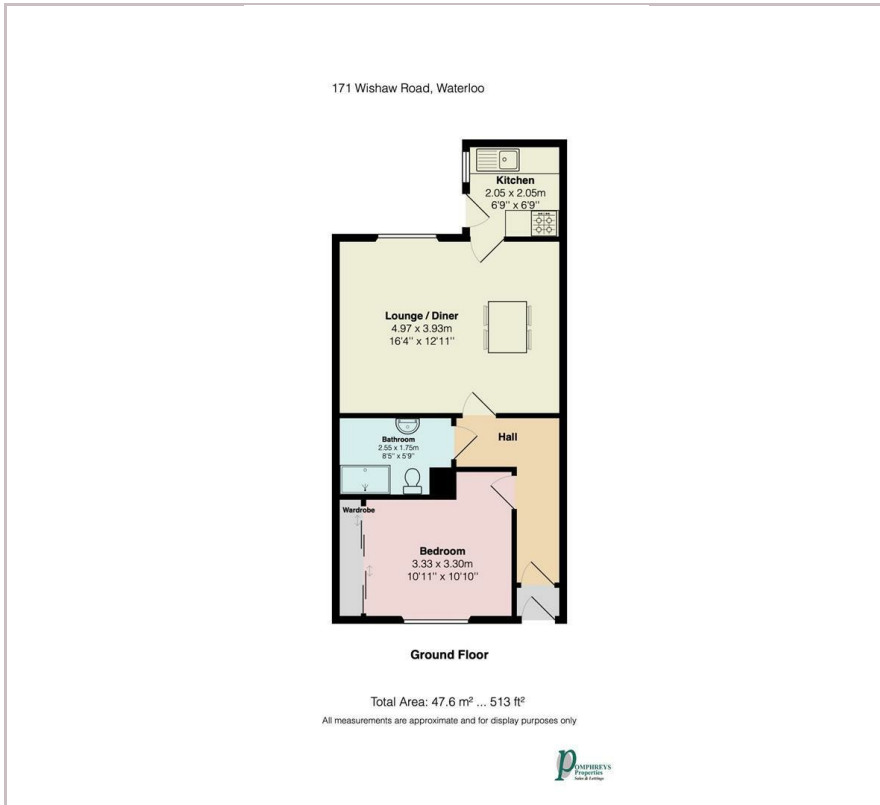
1



1



Floor Plan



Area Map



Energy Efficiency Graph



These particulars, whilst believed to be accurate are set out as a general outline only for guidance and do not constitute any part of an offer or contract. Intending purchasers should not rely on them as statements of representation of fact, but must satisfy themselves by inspection or otherwise as to their accuracy. No person in this firm's employment has the authority to make or give any representation or warranty in respect of the property.