



51 Cairngorm Crescent

, Wishaw, ML2 7PS

Offers over £58,000

CLOSING DATE SET!
WEDNESDAY 1ST MAY AT NOON

A large upper apartment in need of internal upgrade, sold as seen

Accommodation comprises entrance stairway, large lounge, kitchen, 3 double bedrooms and bathroom.

Further benefitting from Double Glazing, Gas Central Heating and a private rear garden.

Cairngorm Crescent is situated minutes from Wishaw town centre with its many amenities and is ideally situated for Wishaw General Hospital, recreational facilities and transport links. Commuting to Glasgow, Edinburgh and the central belt via both the M8 and M74 motorway networks.

EPC D

Viewing

Please contact our Pomphreys Properties Ltd Office on 01698373365 if you wish to arrange a viewing appointment for this property or require further information.

- Internal upgrade required SOLD AS SEEN
- CLOSING DATE SET! WEDNESDAY 1ST MAY AT NOON
- Upper Apartment
- Close to all amenities
- Rear Garden
- Double Glazing
- Gas Central Heating
- Buy to Let investment Opportunity



3



1

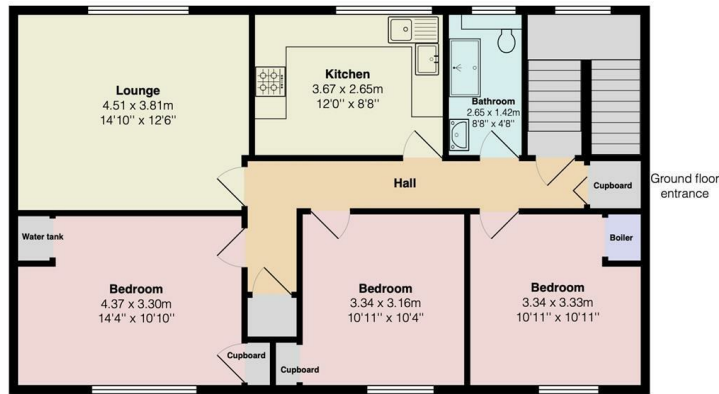


1



Floor Plan

51 Cairngorm Crescent, Wishaw



First Floor

Total Area: 88.0 m² ... 947 ft²

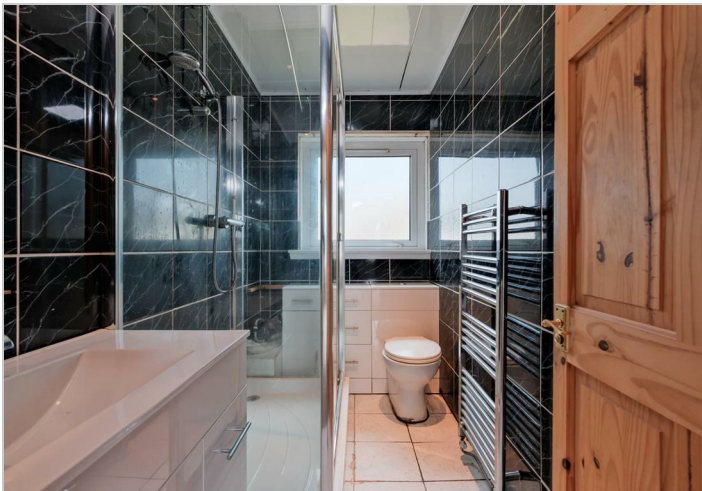
All measurements are approximate and for display purposes only



Area Map



Energy Efficiency Graph



These particulars, whilst believed to be accurate are set out as a general outline only for guidance and do not constitute any part of an offer or contract. Intending purchasers should not rely on them as statements of representation of fact, but must satisfy themselves by inspection or otherwise as to their accuracy. No person in this firm's employment has the authority to make or give any representation or warranty in respect of the property.