

High Oaks

, AL3 6EL



High Oaks

, AL3 6EL

£1,895 PCM

- Available June 2025
- Two Double Bedrooms
 - End Terrace House
 - Large Rear Garden
- Outside Storage & Utility
- Modern Fully Fitted Kitchen
 - Popular Location
 - On Street Parking
 - Council Tax Band C





High Oaks

, AL3 6EL

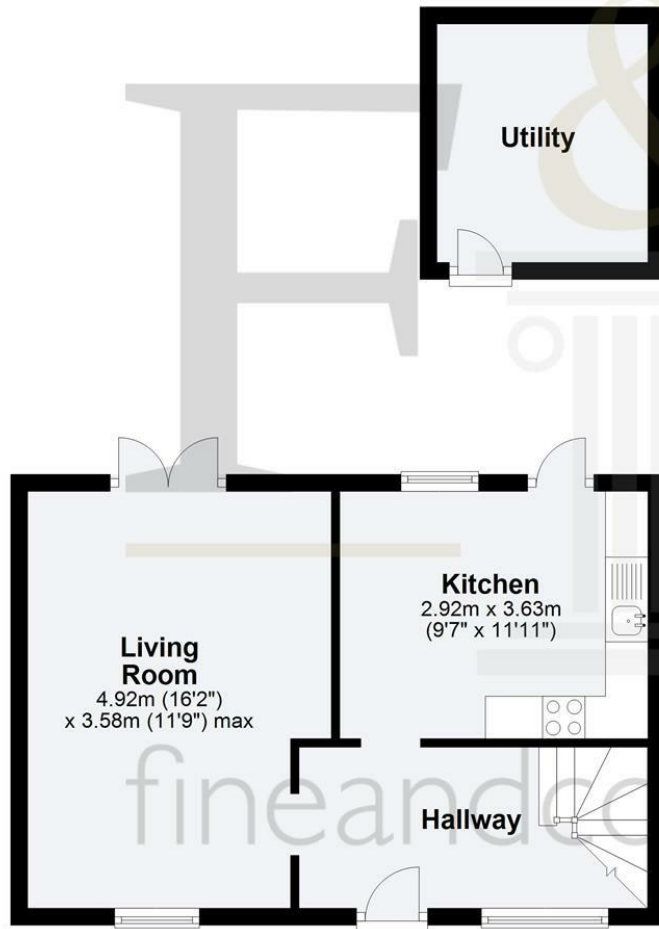
A well presented two bedroom terrace house available to let in the sought-after High Oaks area of St. Albans. The property offers a spacious reception room, modern fully fitted kitchen, two double bedrooms, and bathroom. The property further benefits from its end-terrace position, providing added privacy and an abundance of natural light. Ideally suited for couples or small families, it is conveniently located close to local amenities, parks, reputable schools, and excellent transport links. This home combines comfortable living with a prime location. Part/unfurnished.

Available June 2025

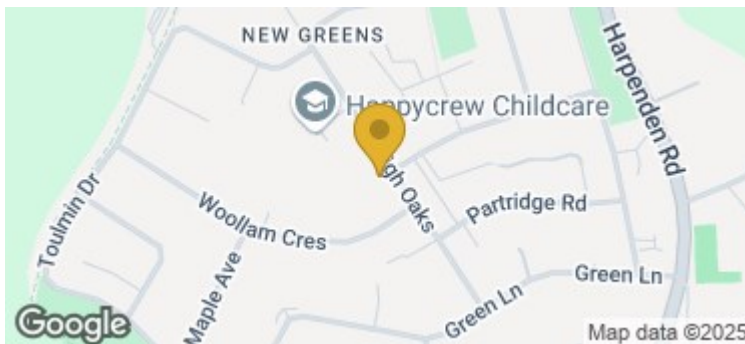
Five week deposit = £2186.00



Ground Floor



First Floor



Energy Efficiency Rating		Current	Potential
Very energy efficient - lower running costs			
(92 plus) A			84
(81-91) B			
(69-80) C		70	
(55-68) D			
(39-54) E			
(21-38) F			
(1-20) G			
Not energy efficient - higher running costs			
England & Wales		EU Directive 2002/91/EC	

Environmental Impact (CO ₂) Rating		Current	Potential
Very environmentally friendly - lower CO ₂ emissions			
(92 plus) A			
(81-91) B			
(69-80) C			
(55-68) D			
(39-54) E			
(21-38) F			
(1-20) G			
Not environmentally friendly - higher CO ₂ emissions			
England & Wales		EU Directive 2002/91/EC	

In accordance with the Consumer Protection from Unfair Trading Regulations 2008 (CPRs) and the Business Protection from Misleading Markets Regulations 2008 (BPRs) Fine & Country have prepared these property particulars as a general guide to a broad description of the property. Fine & Country as agents for the vendor or lessor and for themselves give notice that (a) these particulars are not intended to constitute part of an offer or contract (b) have not carried out a structural survey and the services, appliances and fittings have not been tested (c) all measurements, photographs, distances and floor plans referred to are given as a guide only and should not be relied upon for the purchase of fixtures and fittings (d) tenure details, service charges and ground rent (where applicable) are given as a guide only and should be checked and confirmed by your solicitor prior to exchange of contracts (e) neither the vendor nor any person in the employment of Fine & Country has any authority to make or give any representation or warranty whatsoever in respect of the property.