



## Highfield Lane

St Albans | Hertfordshire | AL4 0RH

£1,125,000

**FINE & COUNTRY**  
fineandcountry.com™

# STEP INSIDE

## Highfield Lane

This exquisite three-floor residence boasts front-facing views, abundant natural light, and meticulous craftsmanship. A key benefit is the side plot that currently serves as extra land, offering future development potential. Currently, a planning application for an extension has already been approved, further enhancing its value and situated a stones throw to St Albans city centre, and the mainline station.

The gated entry leads to a spacious driveway and side plot with approved extension plans (planning ref: 5/2023/2570). The adaptable layout includes three bedrooms on the first floor, with the principal bedroom featuring an en-suite and fitted wardrobes. The second floor offers additional versatile space/fourth bedroom and ample storage. The property also includes a garden room with a kitchenette and en-suite, and a timber-constructed study, ideal for a home office. The landscaped rear garden features a patio with a pergola, manicured lawns, and vibrant plants.









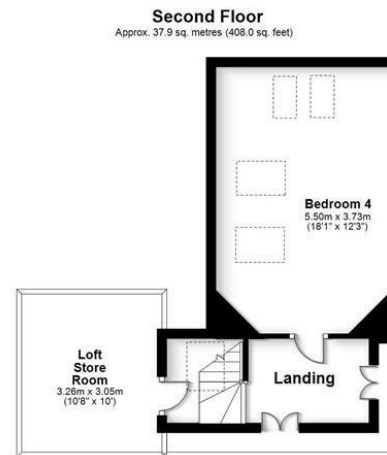
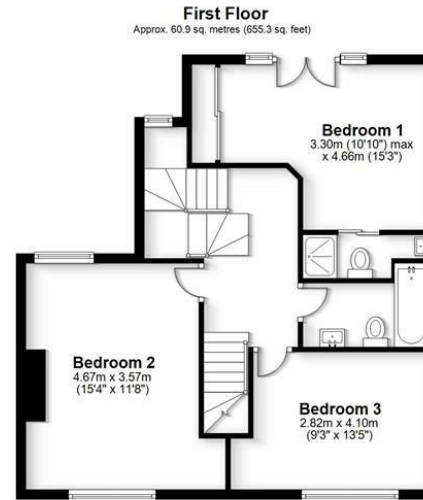
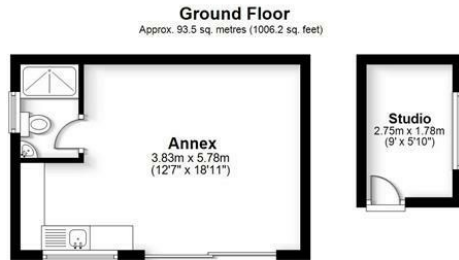
# STEP OUTSIDE

## Highfield Lane

Located on Highfield Lane in Tyttenhanger, it offers tranquility and convenience with access to St Albans city centre, the mainline station, esteemed schools, major motorways, Highfield Park, health clubs, and local shops. The community hosts annual events including a bonfire and fireworks display, Christmas party, and regular quiz evenings.







Total area: approx. 192.3 sq. metres (2069.5 sq. feet)

FOR ILLUSTRATIVE PURPOSES ONLY - NOT TO SCALE  
The position and size of doors, windows, appliances and other features are approximate only. Total area includes garages and outbuildings - © My Home Property Marketing - Unauthorised reproduction prohibited.  
Plan produced using PlanUp.

Energy Efficiency Rating		
	Current	Potential
Very energy efficient - lower running costs		
(92 plus) <b>A</b>		<b>86</b>
(81-91) <b>B</b>		
(69-80) <b>C</b>	<b>76</b>	
(55-68) <b>D</b>		
(39-54) <b>E</b>		
(21-38) <b>F</b>		
(1-20) <b>G</b>		
Not energy efficient - higher running costs		
<b>England &amp; Wales</b>	EU Directive 2002/91/EC	

In accordance with the Consumer Protection from Unfair Trading Regulations 2008 (CPRs) and the Business Protection from Misleading Markets Regulations 2008 (BPRs) Fine & Country have prepared these property particulars as a general guide to a broad description of the property. Fine & Country as agents for the vendor or lessor and for themselves give notice that (a) these particulars are not intended to constitute part of an offer or contract (b) have not carried out a structural survey and the services, appliances and fittings have not been tested (c) all measurements, photographs, distances and floor plans referred to are given as a guide only and should not be relied upon for the purchase of fixtures and fittings (d) tenure details, service charges and ground rent (where applicable) are given as a guide only and should be checked and confirmed by your solicitor prior to exchange of contracts (e) neither the vendor nor any person in the employment of Fine & Country has any authority to make or give any representation or warranty whatsoever in respect of the property.

fineandcountry.com™

