

College Place

St. Albans, AL3 4PU



College Place

St. Albans, AL3 4PU

£1,950 PCM

- Available Mid April 2024
- Two Double Bedrooms
- Mid-Terraced Cottage
- Fully Fitted Kitchen & Modern Bathroom Suite
- Open Plan Lounge/Diner
 - Open Plan Lounge/Diner
- Good Decorative Order Throughout
 - Private Rear Garden
 - Conservation Area
 - City Centre Location
 - Council Tax band E



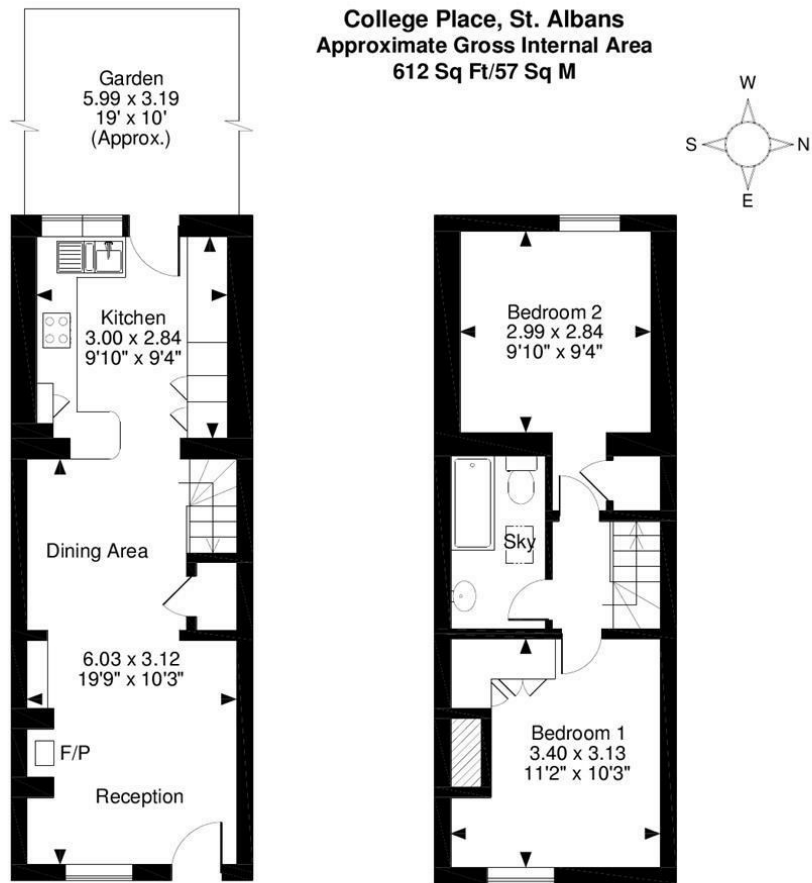


College Place

St. Albans, AL3 4PU



Fine and Country St Albans
3 London Road, St Albans, AL1 1LA
01727 229799
stalbans@fineandcountry.com



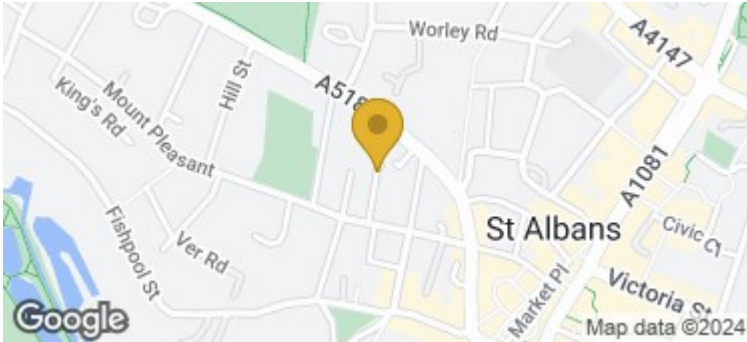
Ground Floor

First Floor

FOR ILLUSTRATIVE PURPOSES ONLY - NOT TO SCALE

The position & size of doors, windows, appliances and other features are approximate only.

© ehouse. Unauthorised reproduction prohibited. Drawing ref. dig/8372095/PJS



Energy Efficiency Rating		
	Current	Potential
Very energy efficient - lower running costs		
(92 plus) A		
(81-91) B		
(69-80) C		
(55-68) D		
(39-54) E		
(21-38) F		
(1-20) G		
Not energy efficient - higher running costs		
	65	85
EU Directive 2002/91/EC		
England & Wales		

Environmental Impact (CO ₂) Rating		
	Current	Potential
Very environmentally friendly - lower CO ₂ emissions		
(92 plus) A		
(81-91) B		
(69-80) C		
(55-68) D		
(39-54) E		
(21-38) F		
(1-20) G		
Not environmentally friendly - higher CO ₂ emissions		
	65	71
EU Directive 2002/91/EC		
England & Wales		

In accordance with the Consumer Protection from Unfair Trading Regulations 2008 (CPRs) and the Business Protection from Misleading Markets Regulations 2008 (BPRs) Fine & Country have prepared these property particulars as a general guide to a broad description of the property. Fine & Country as agents for the vendor or lessor and for themselves give notice that (a) these particulars are not intended to constitute part of an offer or contract (b) have not carried out a structural survey and the services, appliances and fittings have not been tested (c) all measurements, photographs, distances and floor plans referred to are given as a guide only and should not be relied upon for the purchase of fixtures and fittings (d) tenure details, service charges and ground rent (where applicable) are given as a guide only and should be checked and confirmed by your solicitor prior to exchange of contracts (e) neither the vendor nor any person in the employment of Fine & Country has any authority to make or give any representation or warranty whatsoever in respect of the property.