

Mortimer Crescent

Kings Park, AL3 4GB

Mortimer Crescent

Kings Park, AL3 4GB

Offers In Excess Of £1,100,000

- Four Bedrooms
- Three Bathrooms
- Semi-Detached Town House
 - Double Garage
 - Lounge with French Doors onto Garden
- Large Kitchen / Diner with Dual Aspect Windows
 - Landscaped Rear Garden
 - Front Garden
- Principal Bedroom with En-Suite & Dressing Room
 - Great Condition Throughout





Mortimer Crescent

Kings Park, AL3 4GB

Presenting a meticulously designed residence, this property spans three floors, providing a harmonious and luminous living space. The layout includes an inviting entrance hall, a convenient cloakroom, a spacious kitchen/breakfast room, and a welcoming sitting room that seamlessly opens onto the garden facing southeast.

Ascending to the first floor reveals three bedrooms, one boasting an en-suite and dressing room, accompanied by a well-appointed family bathroom. The second floor showcases an exquisite primary bedroom featuring a dressing room and an additional en-suite.

Externally, the property boasts a meticulously maintained rear garden with direct access to the double garage, while the front garden exceeds the average size, enhancing the overall appeal of the residence.

Kings Park, an award-winning development, is situated on the south side of St Albans, offering excellent access to the M25 at junction 21A and the M1 at junction 6. For commuters, there is a fast one-stop train link to St Pancras International (with Eurostar direct to Brussels and Paris) and Kings Cross station. Abbey Station also provides access to trains heading to Watford Junction, where there is a fast train to Euston station. St Albans boasts a comprehensive range of shopping facilities within the city centre, complemented by the nearby Waitrose food hall. The adjacent Verulamium Park, with approximately 100 acres of beautiful parkland, offers leisure facilities. St Albans features an excellent selection of schooling options, both state and private.



Fine and Country St Albans
3 London Road, St Albans, AL1 1LA
01727 229799
stalbans@fineandcountry.com



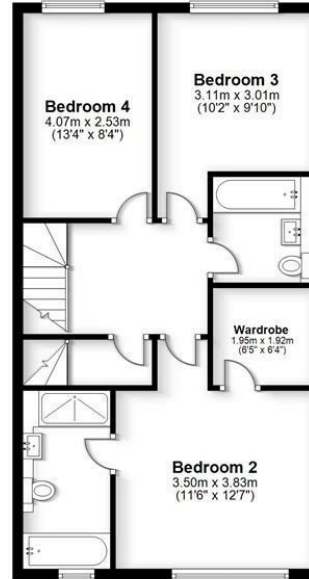
Ground Floor

Approx. 95.4 sq. metres (1026.7 sq. feet)



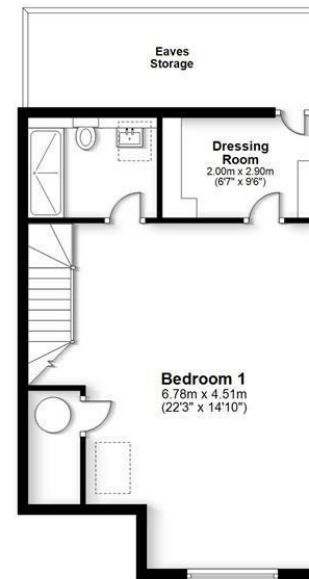
First Floor

Approx. 61.7 sq. metres (663.8 sq. feet)



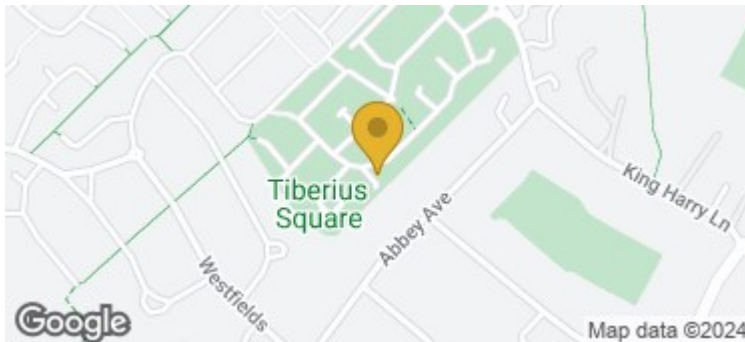
Second Floor

Approx. 47.3 sq. metres (509.0 sq. feet)



Total area: approx. 204.3 sq. metres (2199.5 sq. feet)

FOR ILLUSTRATIVE PURPOSES ONLY - NOT TO SCALE
The position and size of doors, windows, appliances and other features are approximate only. Total area includes garages and outbuildings - © My Home Property Marketing - Unauthorised reproduction prohibited.
Plan produced using PlanUp.



Energy Efficiency Rating		Current	Potential
Very energy efficient - lower running costs			
(92 plus) A			
(81-91) B			
(69-80) C			
(55-68) D			
(39-54) E			
(21-38) F			
(1-20) G			
Not energy efficient - higher running costs			
EU Directive 2002/91/EC		81	88
England & Wales			

Environmental Impact (CO ₂) Rating		Current	Potential
Very environmentally friendly - lower CO ₂ emissions			
(92 plus) A			
(81-91) B			
(69-80) C			
(55-68) D			
(39-54) E			
(21-38) F			
(1-20) G			
Not environmentally friendly - higher CO ₂ emissions			
EU Directive 2002/91/EC			
England & Wales			

In accordance with the Consumer Protection from Unfair Trading Regulations 2008 (CPRs) and the Business Protection from Misleading Markets Regulations 2008 (BPMRs) Fine & Country have prepared these property particulars as a general guide to a broad description of the property. Fine & Country as agents for the vendor or lessor and for themselves give notice that (a) these particulars are not intended to constitute part of an offer or contract (b) have not carried out a structural survey and the services, appliances and fittings have not been tested (c) all measurements, photographs, distances and floor plans referred to are given as a guide only and should not be relied upon for the purchase of fixtures and fittings (d) tenure details, service charges and ground rent (where applicable) are given as a guide only and should be checked and confirmed by your solicitor prior to exchange of contracts (e) neither the vendor nor any person in the employment of Fine & Country has any authority to make or give any representation or warranty whatsoever in respect of the property.