



Offers In Excess Of £1,000,000

3 Bedroom Detached House for sale

151 Wapping High Street, London



Overview

This detached four storey townhouse, boasting over 1,200 sq ft of internal accommodation, offers buyers exceptional versatility, functioning as either a two- or three-bedroom property. A charming outside garden terrace and the option for garage parking (available at an additional cost) further enhance its appeal.



Key Features

- 1215 sq ft of Internal Space
- Garage (Additional Cost if Required)
- Secluded Patio Garden Terrace
- Freehold
- Chain Free
- Sought After Location
- Excellent Transport Links
- Close to Local Shops/Restaurants/Bars
- Open Day Viewings
- 2/3 Bedrooms





This detached four storey townhouse, boasting over 1,200 sq ft of internal accommodation, offers buyers exceptional versatility, functioning as either a two- or three-bedroom property. A charming south facing outside garden terrace and the option for garage parking (available at an additional cost) further enhance its appeal.

The first floor features a spacious open-plan kitchen, lounge, and dining area, designed for both comfort and functionality. The well-appointed kitchen includes a generous selection of floor and wall cabinets, ample worktop space, and a range of integrated appliances. The flexible layout allows for either a dedicated dining area or a lounge setup, catering to various lifestyle needs. Patio doors open onto a bright private garden terrace, providing an inviting outdoor retreat. Additionally, there is a separate downstairs toilet on this floor for added convenience.

The second floor offers a generously sized open-plan space, currently used as a lounge. However, its adaptable layout allows it to function just as easily as an additional bedroom. With some simple modifications, this area could even accommodate both a lounge and a third bedroom, providing excellent flexibility to suit different needs.

The third floor features a spacious bedroom with a desirable south-facing aspect, ensuring an abundance of natural light throughout the day. A range of built-in cupboards and wardrobes offer excellent storage solutions, keeping the space both functional and uncluttered. This floor also includes a well-appointed family bathroom, complete with a bathtub, an overhead shower, and additional cupboard space for added convenience. A generously sized landing provides even more storage options, enhancing practicality.

A stylish spiral staircase leads to the top floor, where you'll find a stunning master bedroom. This expansive retreat benefits from natural light streaming in through charming dormer windows, built-in wardrobes for ample storage, and access to its own private ensuite bathroom, creating a perfect blend of comfort and elegance.

The property offers exceptional versatility and can be reconfigured into a three-bedroom layout with two reception rooms, as illustrated in the additional floorplan.

There is an option to purchase a secure 124 sq ft garage within the gated development. The garage is on a separate title deed, offering additional



convenience and security. For more details, please contact Adrian (Property Manager)

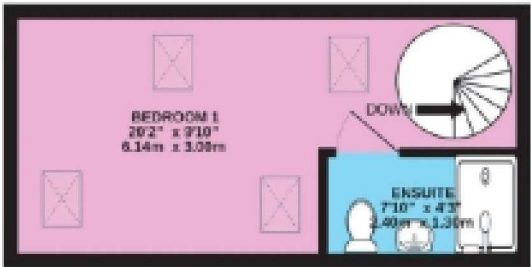
Wapping combines historical charm with modern convenience, making it a highly sought-after location. Its cobbled streets, riverside views, and rich maritime history create a unique atmosphere. The area boasts a welcoming community, excellent amenities, and serene green spaces like Wapping Gardens and King Edward Memorial Park, making it an ideal place to call home.

Floorplans

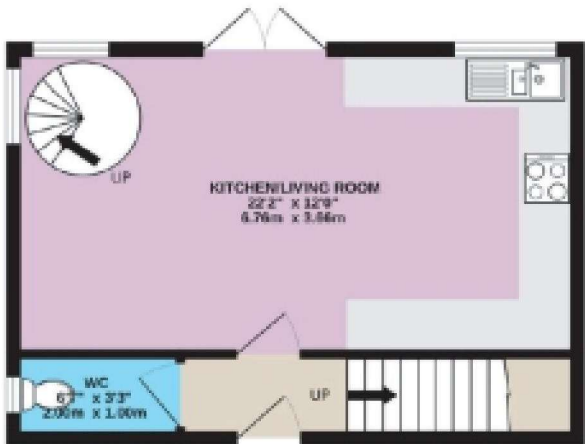


Wapping High Street, London, E1

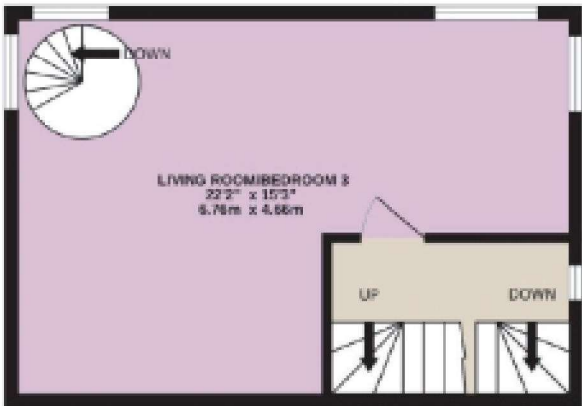
APPROX. GROSS INTERNAL FLOOR AREA 1215 SQ FT 112.9 SQ METRES



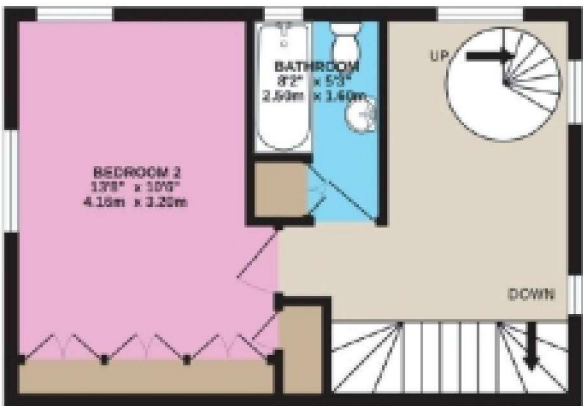
THIRD FLOOR



GROUND FLOOR



FIRST FLOOR



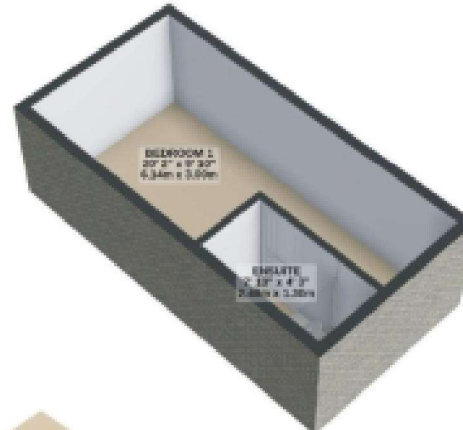
SECOND FLOOR

Floorplans

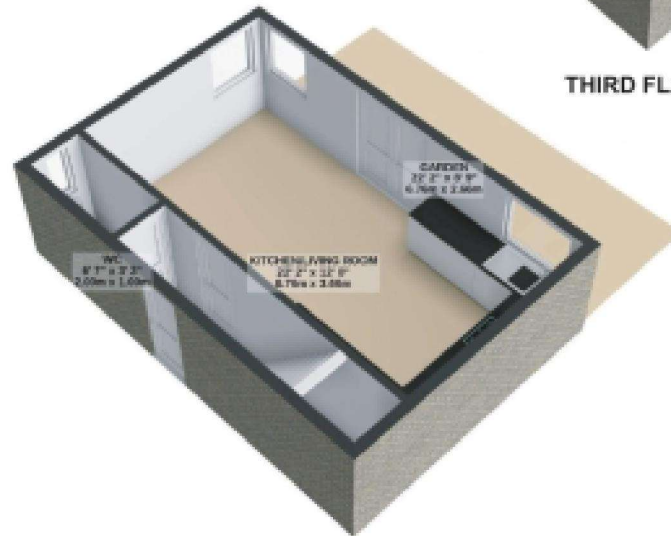


Wapping High Street, London, E1

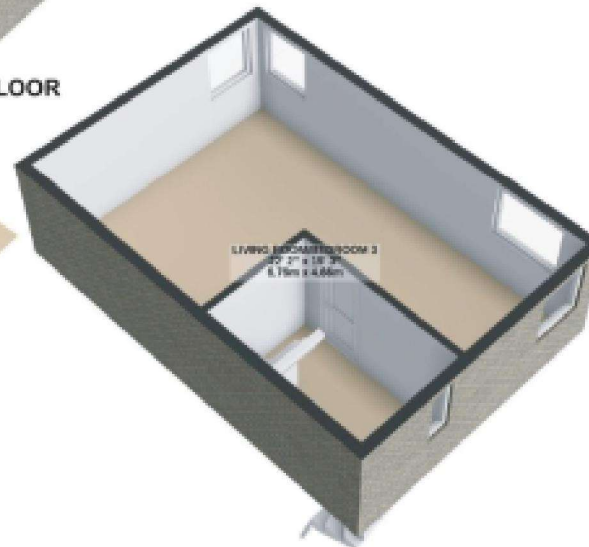
APPROX. GROSS INTERNAL FLOOR AREA 1215 SQ FT 112.9 SQ METRES



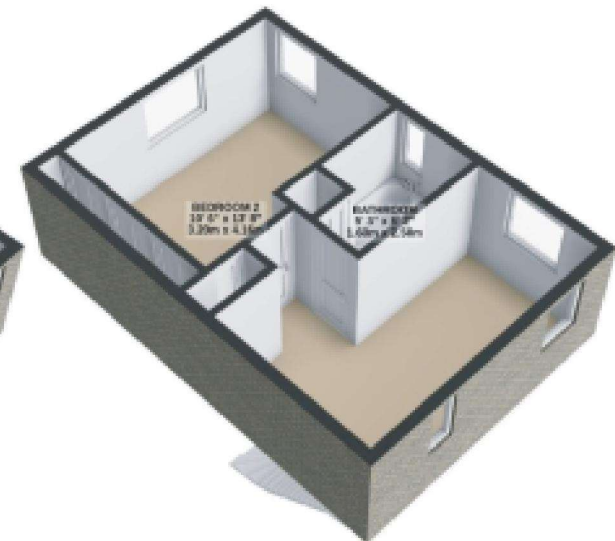
THIRD FLOOR



GROUND FLOOR



FIRST FLOOR



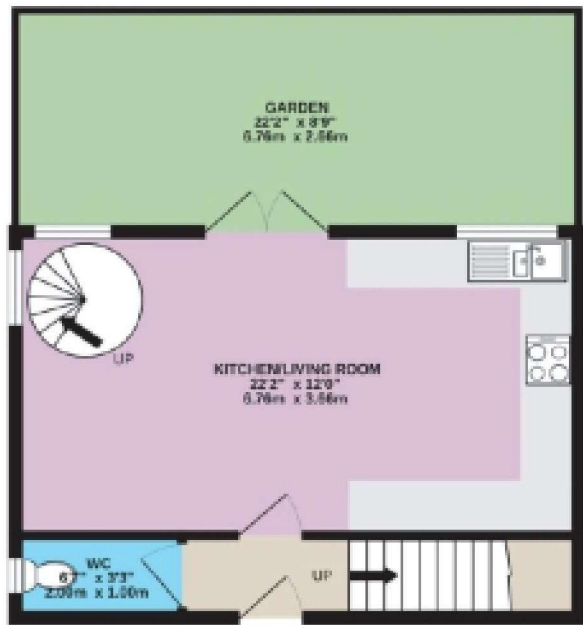
SECOND FLOOR

Floorplans

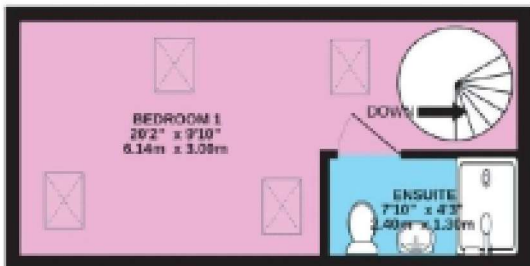


Wapping High Street, London, E1

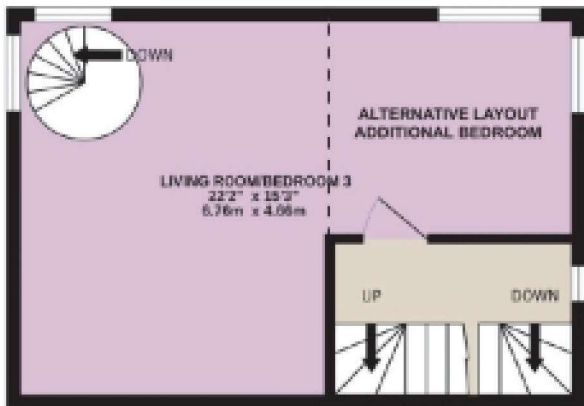
APPROX. GROSS INTERNAL FLOOR AREA 1215 SQ FT 112.9 SQ METRES



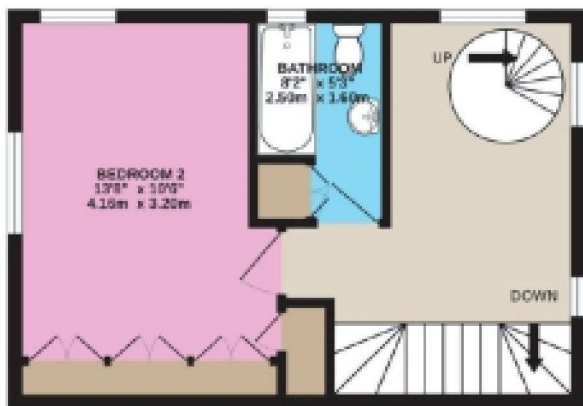
GROUND FLOOR



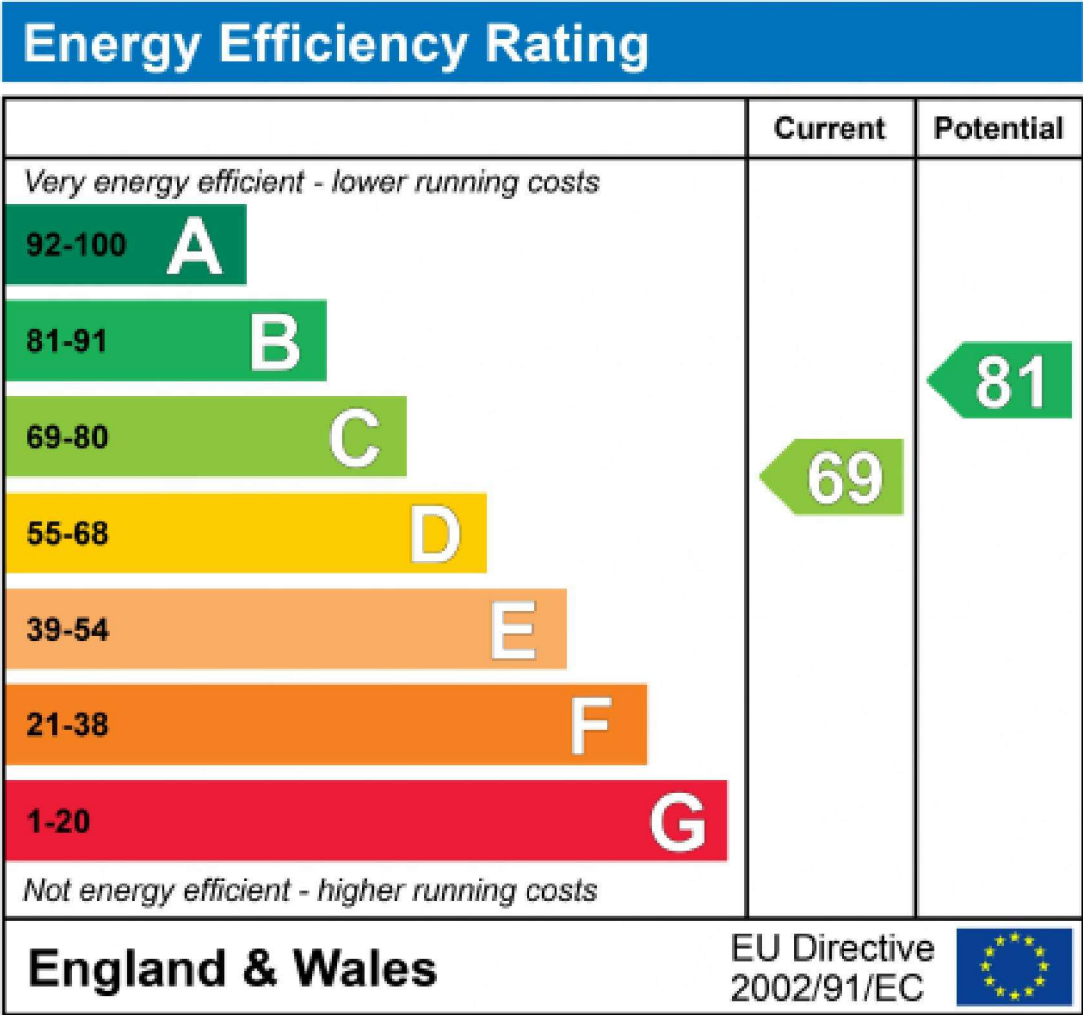
THIRD FLOOR



FIRST FLOOR



SECOND FLOOR





Marketed by EweMove Wapping & Bow
0203 866 7070 (24/7)
wapping@ewemove.com