



**GUIDE PRICE OF £180,000**

**MODERN AUCTION**

**Prime 5-Bed HMO**

## OVERVIEW



**5 Bedrooms**



**2 Bathrooms**



**Off-street parking**



**Large period property  
spanning 3 floors**



**Period features with high  
ceilings and large rooms**

EweMove is proud to present this impressively spacious mid-terrace HMO. The house spans three floors and features two bathrooms, two kitchens, and five bedrooms. This house has been extended and is excellent as an HMO or large-family home. Outside, there is a rear garden and on-street parking to the front.

The property is near parks and offers exceptional connectivity to various key destinations. Dover's high-speed rail link isn't far, providing you direct access to London St. Pancras in just over an hour. This convenience is ideal for commuters and anyone seeking easy access to the capital.

In addition to the rail link, the A2 is conveniently nearby, providing swift connections to Canterbury City Centre, ensuring you can easily enjoy the leisure, history and culture. For those with air travel in mind, London Gatwick Airport is easily accessible via the major roadways within a short distance from this property.



# KITCHEN



**EweMove**  
SALES AND LETTINGS  
MAIDSTONE WEST





Bedroom



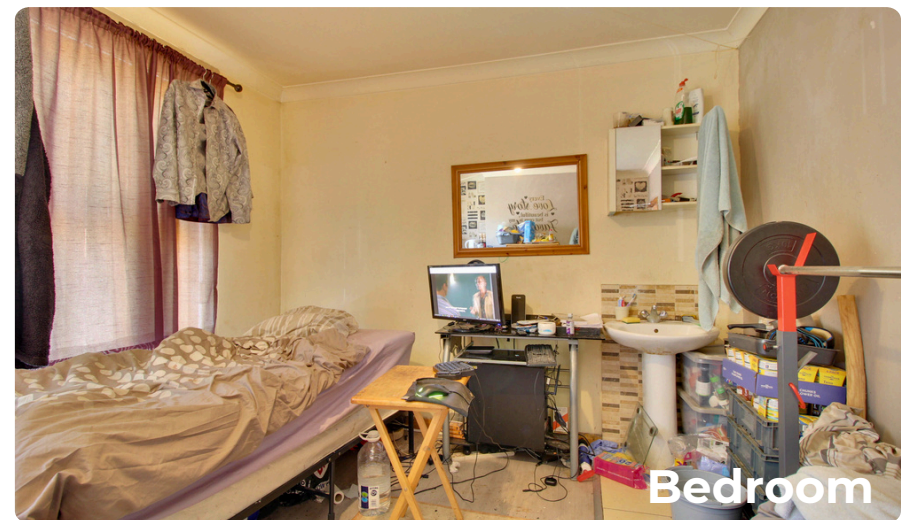
Kitchenette



Bedroom



W/C



Bedroom



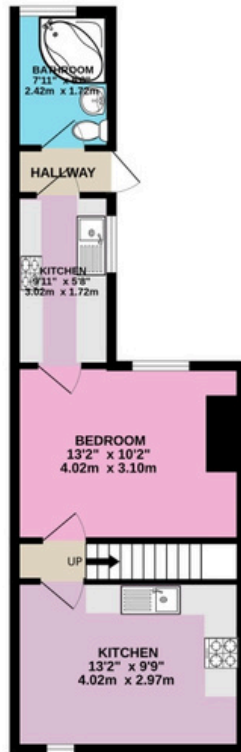
# BATHROOM



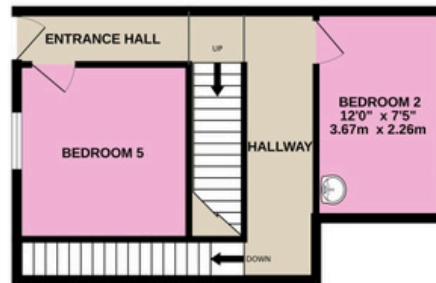
**EweMove**  
SALES AND LETTINGS  
MAIDSTONE WEST

# FLOOR PLANS

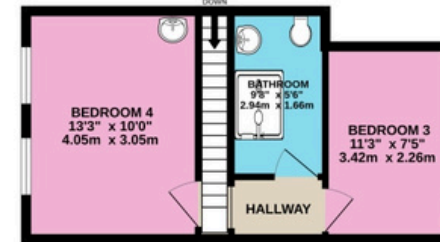
**BASEMENT**  
402 sq.ft. (37.4 sq.m.) approx.



**GROUND FLOOR**  
361 sq.ft. (33.5 sq.m.) approx.



**1ST FLOOR**  
314 sq.ft. (29.2 sq.m.) approx.



## MID TERRACE HOUSE

TOTAL FLOOR AREA: 1077 sq.ft. (100.1 sq.m.) approx.

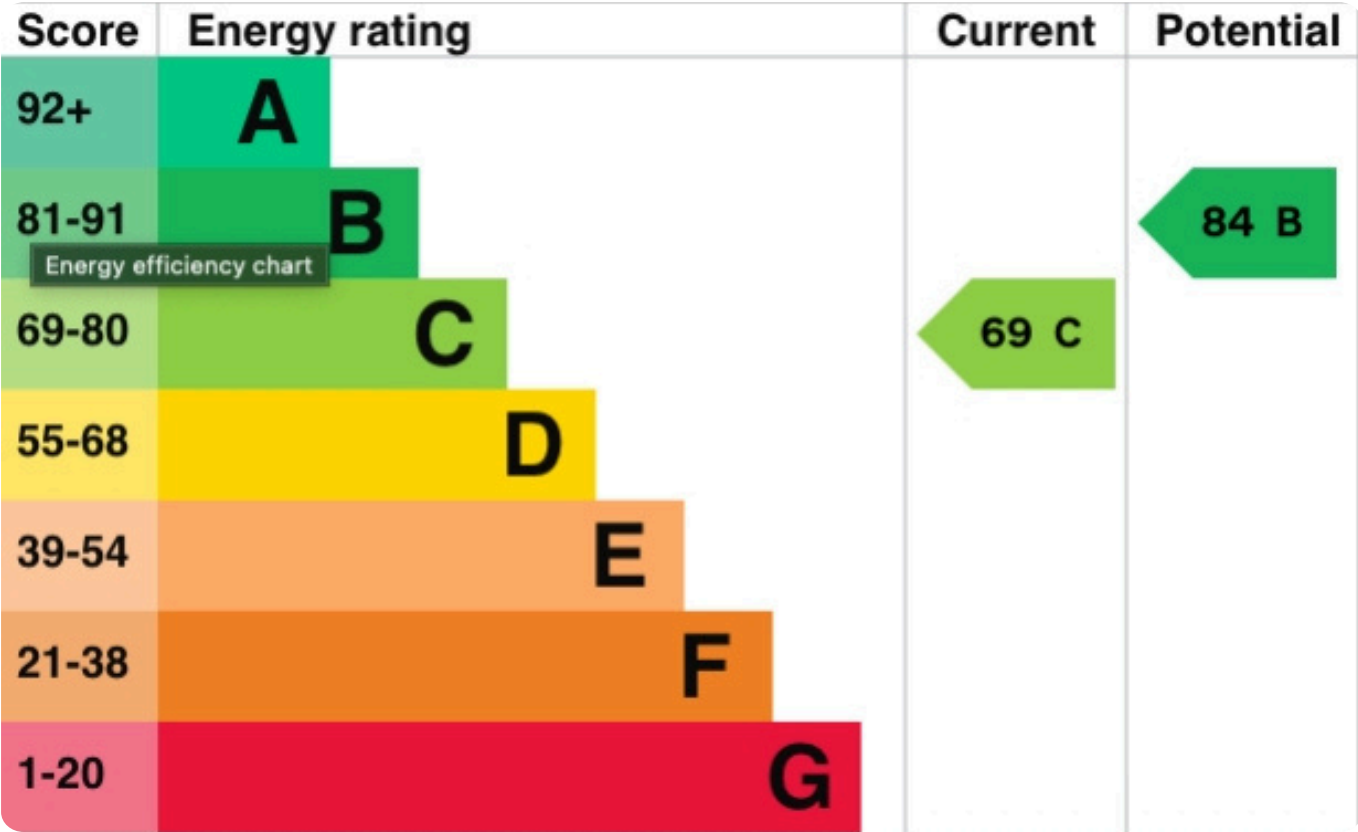
Whilst every attempt has been made to ensure the accuracy of the floorplan contained here, measurements of doors, windows, rooms and any other items are approximate and no responsibility is taken for any error, omission or mis-statement. This plan is for illustrative purposes only and should be used as such by any prospective purchaser. The services, systems and appliances shown have not been tested and no guarantee as to their operability or efficiency can be given.  
Made with Metropix ©2024

Please note, all dimensions are approximate / maximums and should not be relied upon for the purposes of floor coverings.



**EweMove**  
SALES AND LETTINGS  
MAIDSTONE WEST

# ADDITIONAL INFORMATION



EPC RATING: C  
COUNCIL TAX BAND: B

Marketed by EweMove Maidstone West

✉ maidstonewest@ewemove.com

☎ 01622 231 782

