



Guide Price £250,000

2 Bedroom Park Home for sale

The Sonata Stepshort, Belton, Great Yarmouth



**EweMove**  
SALES AND LETTINGS



## Overview

Live a life of luxury and tranquillity under extensive Norfolk skies with a glorious coastline just moments away. Our OPEN HOUSE events are fast approaching, so come along and get your move on track.



## Key Features

- Open House Event - 6th and 7th September 2024
- Brand New Over-50's Residential Homes
- Turnkey Home Fully-Furnished
- Quiet Enclosed Gardens and Pet Friendly
- Private Driveway Parking for Two Vehicles
- Friendly Community with Local Everyday Essentials Close By
- Gorleston-on-Sea Beach, Marine Parade and Golf Club within a 10-Minute Drive
- £5000 Towards Legal and Estate Agent Fees



Welcome to Rose Farm Residential Park in Belton, just 10 minutes from the Norfolk coastline. An exciting line of brand-new, luxury park homes is underway to provide you with a splendid home and relaxed lifestyle. These homes are modern in layout and design offering a sophisticated build, tasteful interiors, and convenient spaces. A home you can be proud of all year round within this delightful residential park.

Complete with integrated appliances, vaulted ceilings, an electric fireplace for ambiance, exterior lighting, and adjacent private parking for two vehicles, there is much to discuss regarding their intelligent design, quality materials, and overall finish. Not to mention a range of additional extras to bespoke your home.

Located within a friendly community offering local eateries, a Tesco Express, and a Wellbeing Pharmacy you will never need to go far for daily essentials. Within a 15-minute drive, you will find supermarkets, shopping outlets, and a wider range of amenities. The Marine Parade and Golf Club at Gorleston-on-Sea are within a 10-minute drive.

There is nothing like viewing a prospective home in person. We are open 24/7 to receive your request and look forward to welcoming you.

What3Words; ///aced.activism.emails



**Lounge Diner**

19' 0" x 18' 4" (5.80m x 5.60m)

Vaulted ceiling, electric fireplace, fitted carpet, three uPVC double-glazed windows, two radiators, and television socket.

**Kitchen**

11' 11" x 9' 2" (3.65m x 2.80m)

Vinyl flooring, radiator, uPVC double glazed window, oak effect worktops, and shaker style kitchen units, electric single built under oven, four burner gas hob, integrated fridge-freezer, dishwasher, washing machine and storage cupboard housing the boiler.

**Bedroom One**

14' 1" x 10' 5" (4.30m x 3.20m)

Fitted carpet, uPVC double-glazed window, colour co-ordinated curtains, radiator, and walk-in wardrobe.

**Ensuite Shower Room**

8' 10" x 7' 0" (2.70m x 2.15m)

uPVC obscured double-glazed window, vinyl flooring, walk-in shower with glass screen, basin, WC, and wall-mounted mirror.

**Bedroom Two**

8' 10" x 8' 6" (2.70m x 2.60m)

Fitted carpet, uPVC double-glazed window, radiator, superior comfort double bed and padded headboard, and colour co-ordinated curtains.

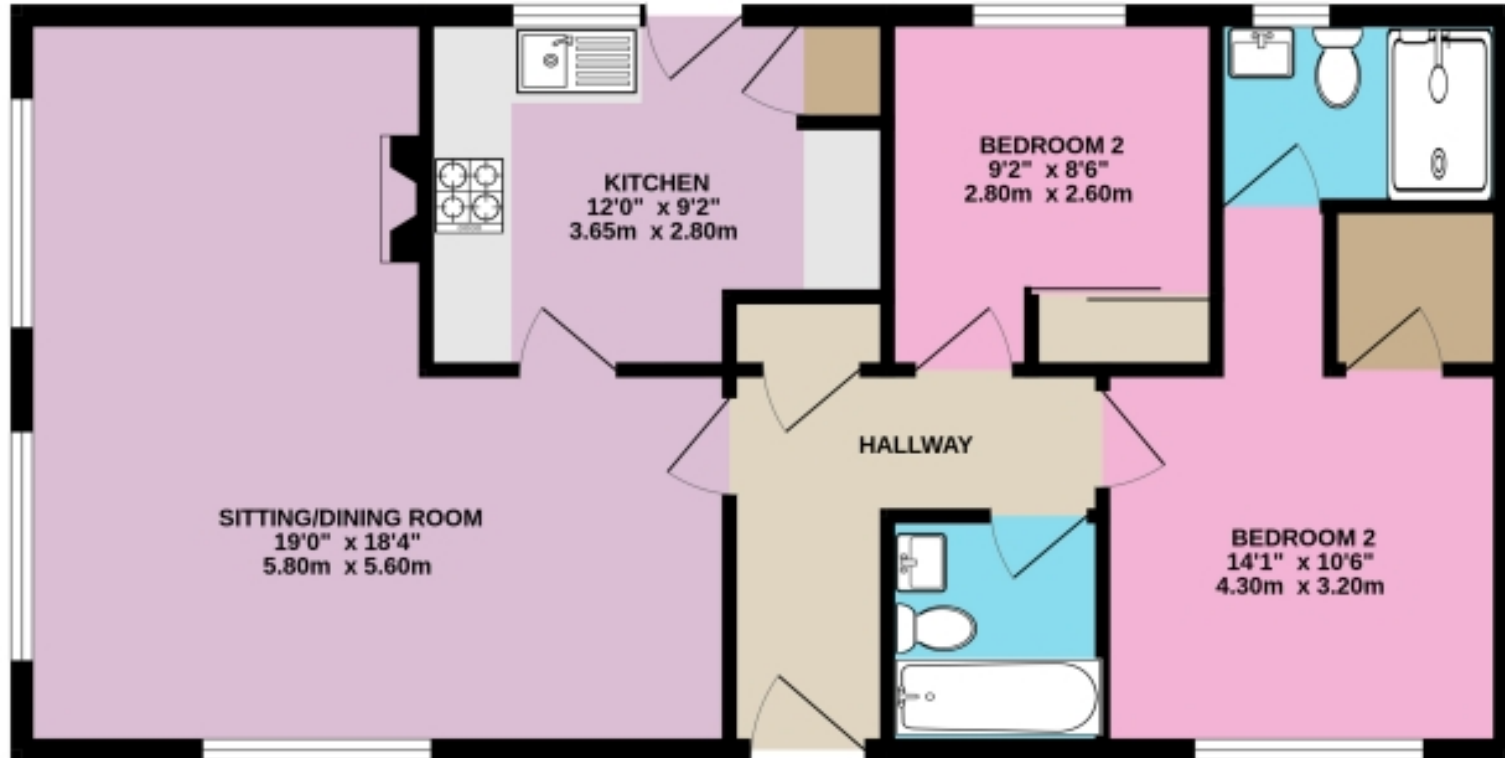
**Bathroom**

6' 6" x 5' 6" (2.00m x 1.70m)

Vinyl flooring, uPVC double-glazed window, roller blind, bath, basin, wall-mounted mirror, radiator, and WC.

# Floorplans

GROUND FLOOR  
729 sq.ft. (67.7 sq.m.) approx.



DETACHED 2-BEDROOM PARK HOME

TOTAL FLOOR AREA : 729 sq.ft. (67.7 sq.m.) approx.

Whilst every attempt has been made to ensure the accuracy of the floorplan contained here, measurements of doors, windows, rooms and any other items are approximate and no responsibility is taken for any error, omission or mis-statement. This plan is for illustrative purposes only and should be used as such by any prospective purchaser. The services, systems and appliances shown have not been tested and no guarantee as to their operability or efficiency can be given.  
Made with Metropix ©2024

## EPC

The EPC will be available within 28 days or the property may be exempt, please speak to us for more details.



Marketed by Ewemove Wymondham

01953 665 785 (24/7)

wymondham@ewemove.com



**EweMove**  
SALES AND LETTINGS