



Offers Over £725,000

5 Bedroom Detached House for sale

2 Barnetts Lane, Kidderminster



EweMove
SALES AND LETTINGS



Overview

Located in a sought-after residential area, next to Kidderminster Golf Course. 2 Barnetts Lane, Kidderminster is a Luxurious and extremely well-presented detached family home offering five generous bedrooms, two bathrooms, and a fantastic living space spread over approximately 2249 square feet. This property is perfect for those seeking an executive versatile family home.



Key Features

- Sauna in Garden room
- Large Orangery
- Recently fitted New Windows
- Modernised Kitchen & Utility
- Large Office/ Snug room
- Five Spacious Bedrooms
- Wood Burner and triple aspect lounge









Located in a sought-after residential area, next to Kidderminster Golf Course. 2 Barnetts Lane, Kidderminster is a luxurious and extremely well-presented detached family home offering five generous bedrooms, two bathrooms, and a fantastic living space spread over approximately 2249 square feet. This property is perfect for those seeking an executive versatile family home.

This fantastic modern home comprises a welcoming entrance hallway, a bright and airy living room, a separate dining area, and a recently refurbished well-equipped shaker-style kitchen with modern fixtures. The five bedrooms provide ample room for family living, with the master bedroom benefiting from an en-suite bathroom. There is also a family bathroom for added convenience.



Externally, the property boasts a large driveway providing off-road parking for several vehicles, as well as a private rear garden and orangery perfect for entertaining. The house is situated in a very peaceful location and benefits from being within easy reach of Kidderminster town centre, local amenities, and excellent transport links.

The area is well-served by local schools, such as Heronswood Primary School, Comberton Primary School, Offmore Primary School and King Charles I High School. Kidderminster Rail Station is within walking distance offering regular train services to Birmingham and Worcester making it ideal for commuters.

Key Features:

- Five Spacious Bedrooms
- Sauna in the Garden Room
- Two Bathrooms
- Modern kitchen with ample storage
- Large Living Rooms/ Snug/ Office and Dining Room
- Generous living and dining areas
- Off-road parking for multiple vehicles
- Private Enclosed rear garden
- Convenient location near schools and local amenities
- Approximately 2249 sq ft of living space

This family home offers a fantastic opportunity for those looking for a larger property with plenty of potential. Early viewing is highly recommended.

Flood Risk Very Low

Broadband superfast

Phone 02, vodafone, virgin okay, 3 poor

For more information or to arrange a viewing, please contact us today!

Legal Disclaimer:

These particulars are prepared and issued in good faith for guidance purposes only and do not constitute, nor form any part of, an offer or contract. No person in the employment of Ewemove WorcesterEast has any authority to make or

give any representation or warranty whatsoever in relation to this property. All descriptions, dimensions, references to condition and necessary permissions for use and occupation, and any other details, are given without responsibility and any intending tenant or purchaser should not rely on them as statements or representations of fact but must satisfy themselves by inspection or otherwise as to the correctness of each of them.

Any areas, measurements, or distances quoted are approximate only. Fixtures, fittings and appliances referred to have not been tested and therefore no guarantee can be given as to their working order or suitability. Ewemove WorcesterEast accepts no liability for any inaccuracy, omission or misstatement contained in these particulars. Rents and availability quoted are subject to change or withdrawal without notice. All negotiations are subject to contract.

Prospective tenants or purchasers are strongly advised to satisfy themselves, by inspection or otherwise, as to the accuracy of the particulars and the suitability of the property for their requirements.

Family Bathroom

10' 2" x 10' 5" (3.10m x 3.20m)
measured at it's widest

Ensuite

8' 9" x 8' 9" (2.67m x 2.67m)

Bedroom 1

13' 11" x 12' 4" (4.25m x 3.78m)

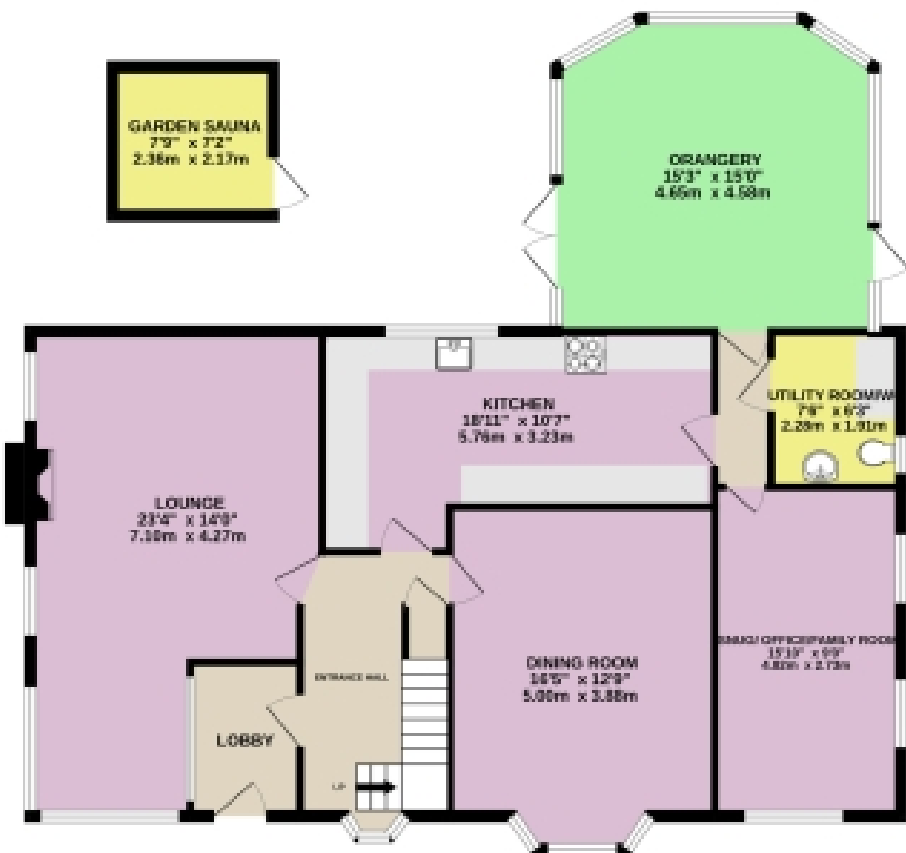
Bedroom 2

12' 2" x 11' 11" (3.71m x 3.65m)

Bedroom 3

Floorplans

GROUND FLOOR
1259 sq.ft. (117.0 sq.m.) approx.



1ST FLOOR
975 sq.ft. (90.6 sq.m.) approx.



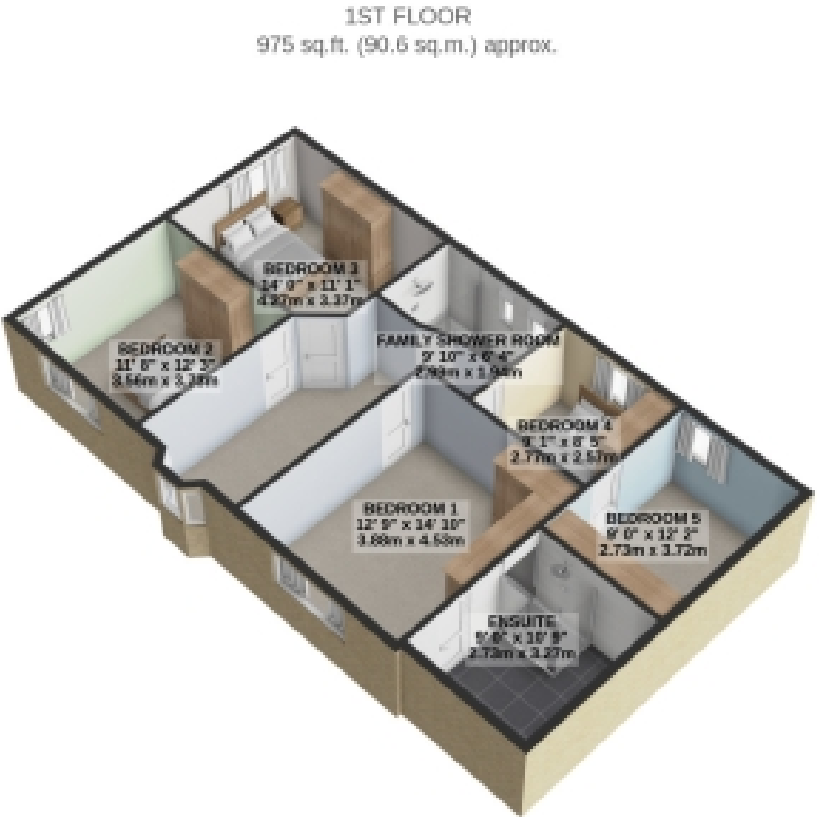
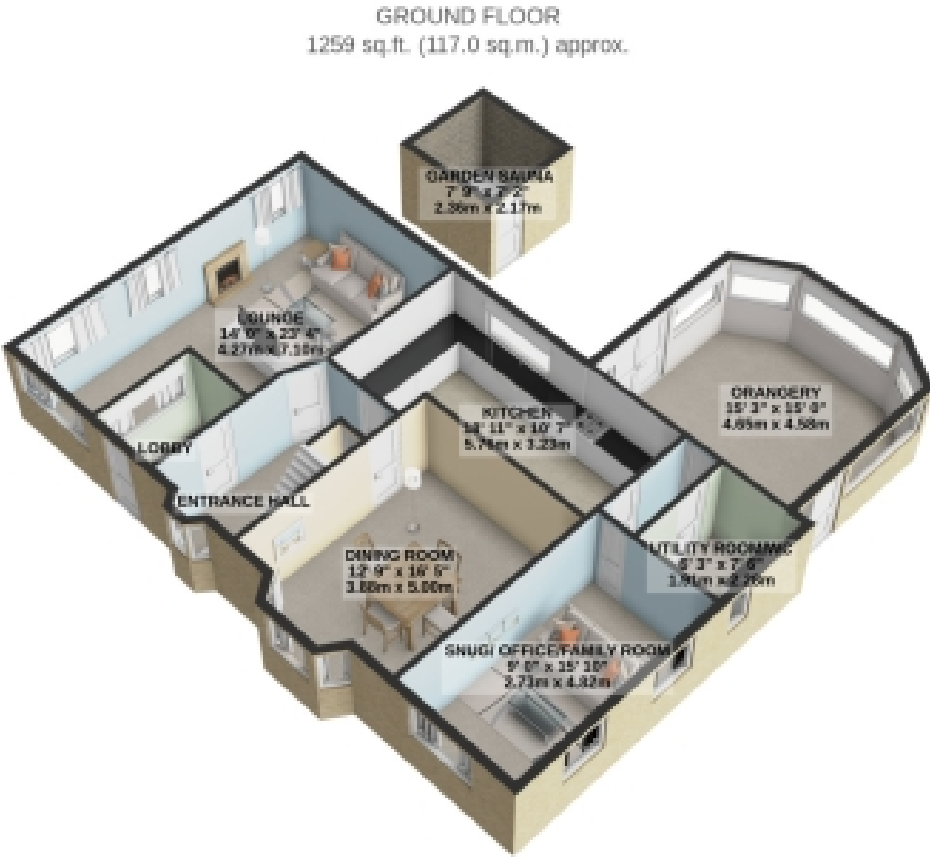
5 BEDROOM DETACHED

TOTAL FLOOR AREA : 2234 sq.ft. (207.5 sq.m.) approx.

Whilst every attempt has been made to ensure the accuracy of the floorplan contained here, measurements of doors, windows, rooms and any other items are approximate and no responsibility is taken for any error, omission or mis-statement. This plan is for illustrative purposes only and should be used as such by any prospective purchaser. The services, systems and appliances shown have not been tested and no guarantee as to their operability or efficiency can be given.
Made with Metropix 6/2025

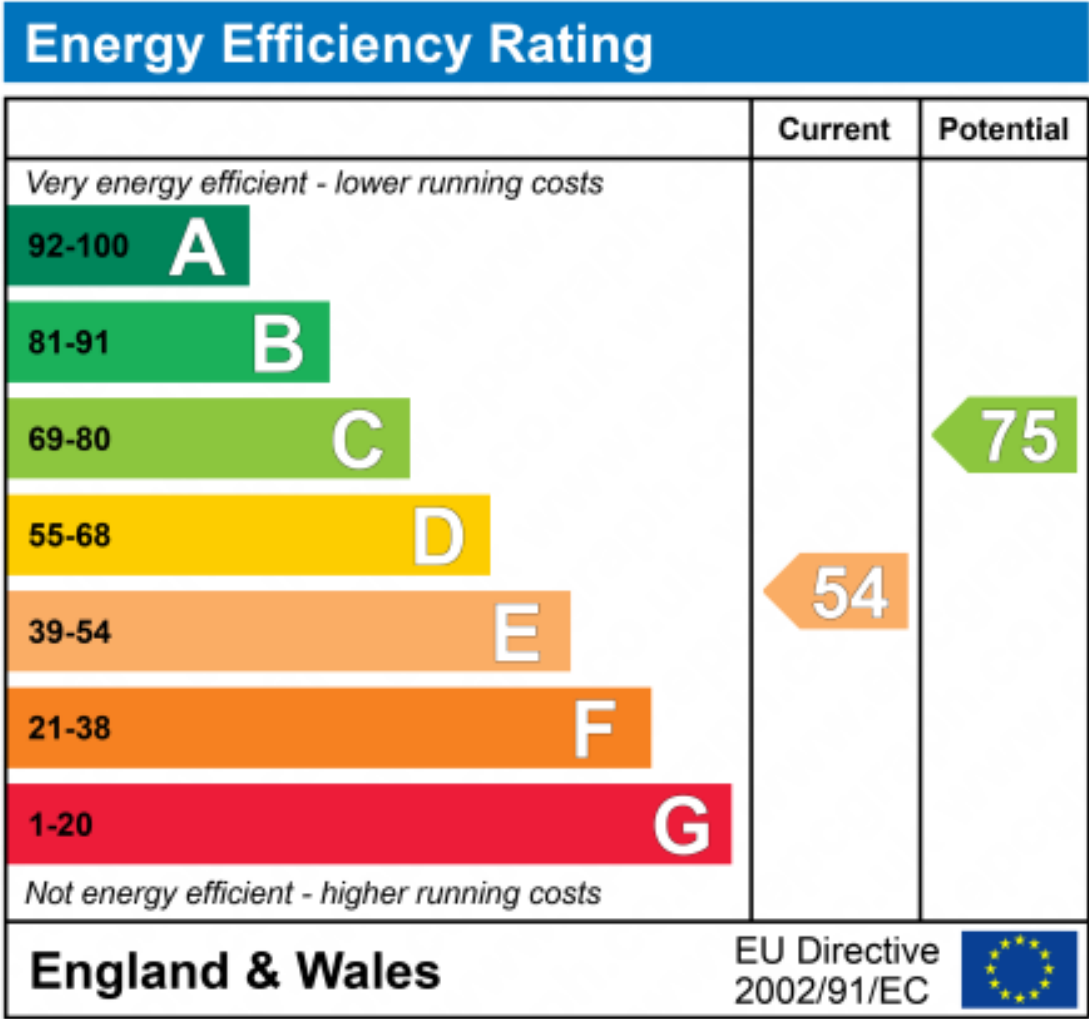


Floorplans



5 BEDROOM DETACHED
TOTAL FLOOR AREA : 2234 sq.ft. (207.5 sq.m.) approx.

For illustrative purposes only. Decorative finishes, fixtures, fittings and furnishings do not represent the current state of the property. Measurements are approximate. Not to scale.
Made with Metropix © 2025





Marketed by EweMove Worcester East

01905 967991 (24/7)
worcestereast@ewemove.com

