



From £195,000

3 Bedroom Terraced House for sale
41 Wood Street, Kidderminster



EweMove
SALES AND LETTINGS



Overview

This 3 bedroom with 2 ½ bathrooms, terrace property, covering 4 floors has been completely renovated and remodelled for the 21st century lifestyle and has to be seen for EWE to appreciate the forward thinking design incorporated here by the developer. With modern dark grey windows and front glazed door, the house looks beautifully vibrant against the deep red bricked frontage.



Key Features

- Newley Renovated and Refurbished
- Master Bedroom with Ensuite
- Cellar Workshop
- Kitchen Diner
- Ensuite Utility Room
- Cloakroom on First Floor
- Patio/ Astro North West Facing Garden With BBQ Area









This 3 bedroom with 2 ½ bathrooms, terrace property, covering 4 floors has been completely renovated and remodelled for the 21st century lifestyle and has to be seen for EWE to appreciate the forward thinking design incorporated here by the developer. With modern dark grey windows and front glazed door, the house looks beautifully vibrant against the deep red bricked frontage.

Entering into the front reception, you have contemporary wall feature on the chimney stack, with wiring for a wall television, the perfect canvas for a modern family to make their mark. Past the stair case, you enter the brand-new grey shaker living kitchen, with electric hob and fitted oven. With grey wood effect flooring throughout the whole ground floor, there is a seamless flow between the rooms.

Uniquely this terraced house now has a separate utility room with access to the garden from a glazed side door and then also the downstairs totally refurbished bathroom. The patioed and AstroTurf low maintenance north west garden stretching down to a gravelled area, is complemented with a side covered access, providing a further dry storage area. Back in the kitchen, you have the door leading down the brick stairs to the storage cellar.

From the right if the kitchen you go up stairs to the first floor, where you have the two bedrooms, the double to the front and the large single to the rear of the house and also the additional cloakroom from the first-floor landing. Further turned stairs lead to the spacious master bedroom with new modern en-suite, covering most of the footprint of the house. Located close to the centre of Kidderminster and easy access to motorways and Birmingham, Redditch and Worcester, this is an ideal starter home, or landlord investment.

With no chain, this is a home EWE can book to view!



Cellar

10' 10" x 10' 9" (3.31m x 3.29m)

Bathroom

6' 8" x 5' 6" (2.05m x 1.68m)

Utility Room

13' 7" x 5' 6" (4.15m x 1.68m)

Kitchen/Dining Room

12' 5" x 10' 5" (3.80m x 3.20m)

Reception Room

10' 9" x 10' 5" (3.30m x 3.20m)

Bedroom 3

10' 5" x 10' 0" (3.20m x 3.06m)

Bedroom 2

10' 9" x 10' 5" (3.30m x 3.20m)

Bedroom 1

22' 8" x 10' 5" (6.93m x 3.20m)

Upstairs Cloakroom

4' 11" x 2' 7" (1.50m x 0.80m)

Ensuite Bathroom

5' 10" x 5' 6" (1.80m x 1.70m)

Floorplans

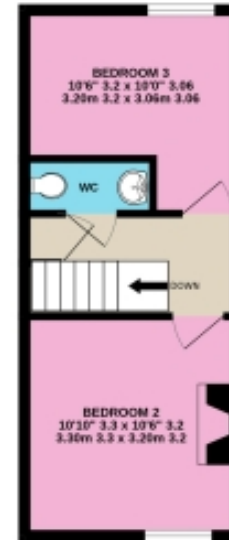
BASEMENT
138 sq.ft. (12.8 sq.m.) approx.



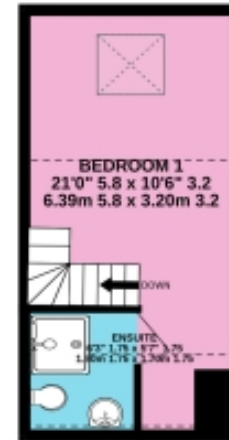
GROUND FLOOR
375 sq.ft. (35.1 sq.m.) approx.



1ST FLOOR
265 sq.ft. (24.7 sq.m.) approx.



2ND FLOOR
189 sq.ft. (18.5 sq.m.) approx.



3 BEDROOM, TERRACE WITH CELLAR, 4 FLOORS, 2 BATHROOMS

TOTAL FLOOR AREA : 990sq.ft. (92.0 sq.m.) approx.

Whilst every attempt has been made to ensure the accuracy of the floorplan contained here, measurements of doors, windows, rooms and any other items are approximate and no responsibility is taken for any error, omission or mis-statement. This plan is for illustrative purposes only and should be used as such by any prospective purchaser. The services, systems and appliances shown have not been tested and no guarantee as to their operability or efficiency can be given.

Made with Metropix ©2024

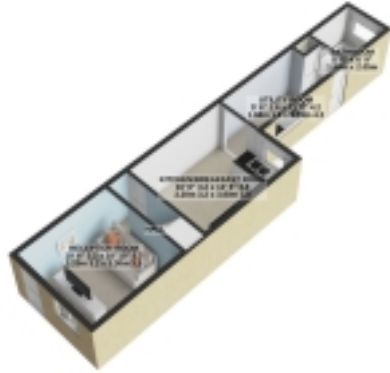


Floorplans

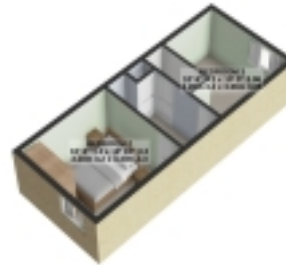
BASEMENT
188 sq ft. (17.8 sq m.) approx.



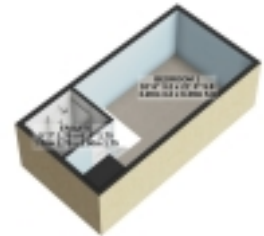
GROUND FLOOR
378 sq ft. (35.1 sq m.) approx.



1ST FLOOR
265 sq ft. (24.7 sq m.) approx.

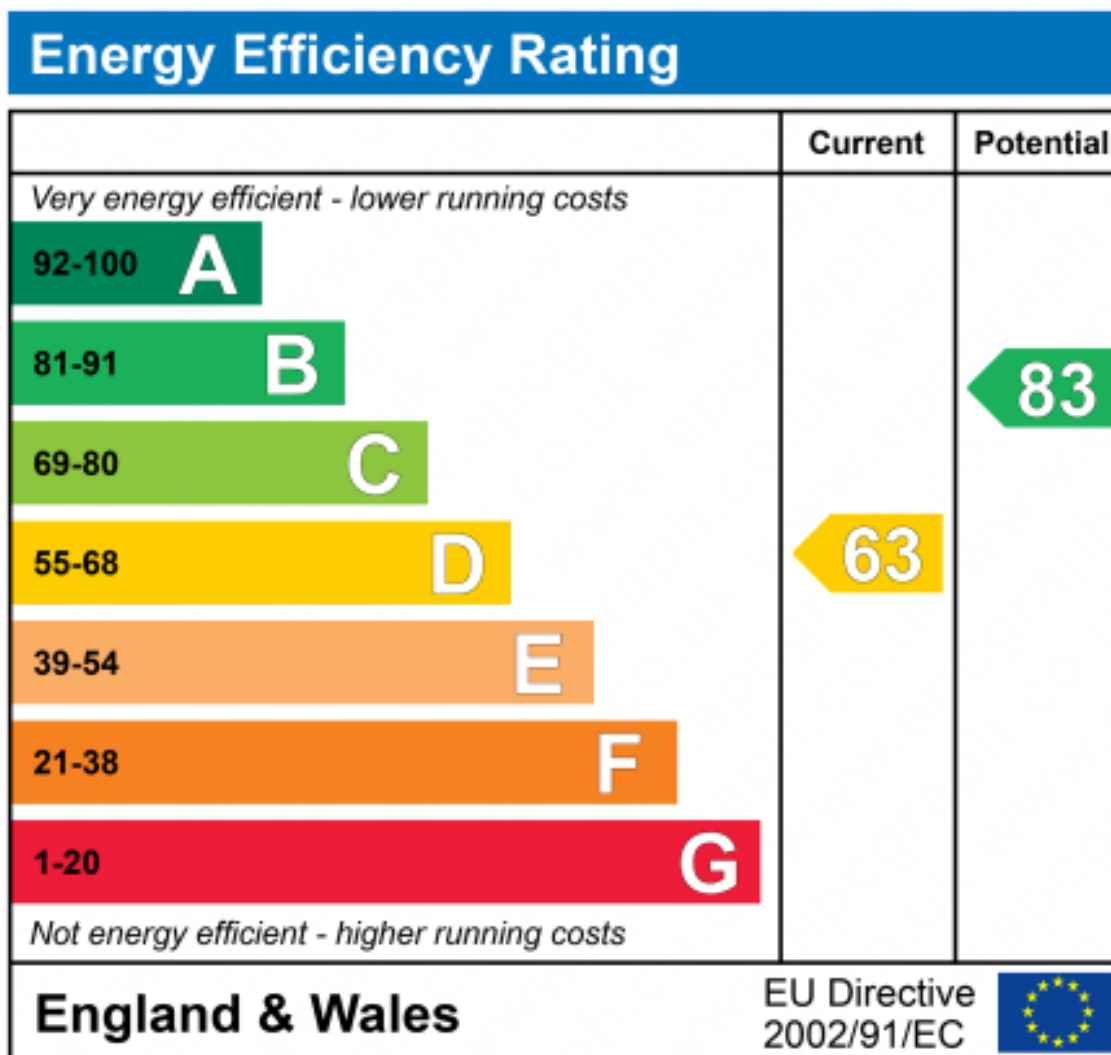


2ND FLOOR
198 sq ft. (18.3 sq m.) approx.



3 BEDROOM, TERRACE WITH CELLAR, 4 FLOORS, 2 BATHROOMS
TOTAL FLOOR AREA: 990 sq ft. (92.0 sq m.) approx.

For illustrative purposes only. Decorative finishes, fixtures, fittings and furnishings do not represent the current state of the property. Measurements are approximate. Not to scale.
Made with Atropic © 2024





Marketed by EweMove Worcester East

01905 967991 (24/7)

worcestereast@ewemove.com



EweMove
SALES AND LETTINGS