



£340,000

4 Bedroom Detached House for sale

10 HIGGOTT CLOSE, BRANSTON, BURTON-ON-TRENT





Overview

Well-presented throughout and offered with no upward chain, this home is a fantastic opportunity. Call us 24/7 or visit our EweMove website to arrange your viewing.



Key Features

- Redecorated and New Carpets Throughout
- Four Bed Detached Home
- Ideally Located In Heart Of Branston
- Master Bedroom with Ensuite
- Two Reception Rooms
- Kitchen Plus Utility
- Driveway & Garage
- Sought After Location
- Excellent Commuter Links







Nestled in a quiet cul-de-sac, this detached family home is ready to move into having recently undergone redecoration and new carpeting throughout. Located in the sought-after Branston village, this family-friendly neighbourhood boasts a variety of local amenities and excellent schools.

Upon entering, a welcoming hallway leads you to a versatile dining room or home office with views over the front garden. The spacious living room, complete with a feature fireplace, opens seamlessly to the rear garden through sliding patio doors-perfect for indoor-outdoor living. The modern, well-equipped kitchen sits adjacent to a handy utility room, offering practicality and convenience. The ground floor is also home to a guest cloakroom and under-stair storage, adding to the functional layout.

Upstairs, the property features four well-proportioned bedrooms, all served by a contemporary family bathroom. The generous master suite includes an en-suite bathroom and fitted wardrobes, providing an extra touch of luxury and privacy.

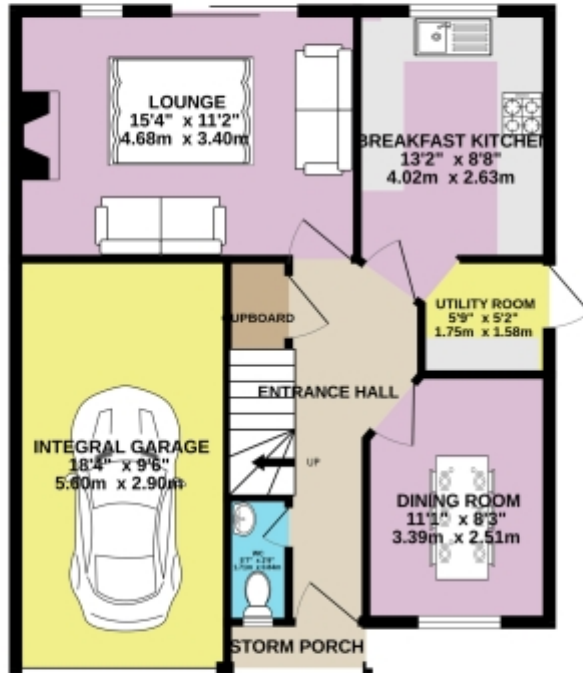


Outside, a spacious driveway with side-by-side parking and an integral single garage provides ample space for vehicles and storage. The rear garden, designed for low-maintenance, is ideal for relaxing or entertaining guests.

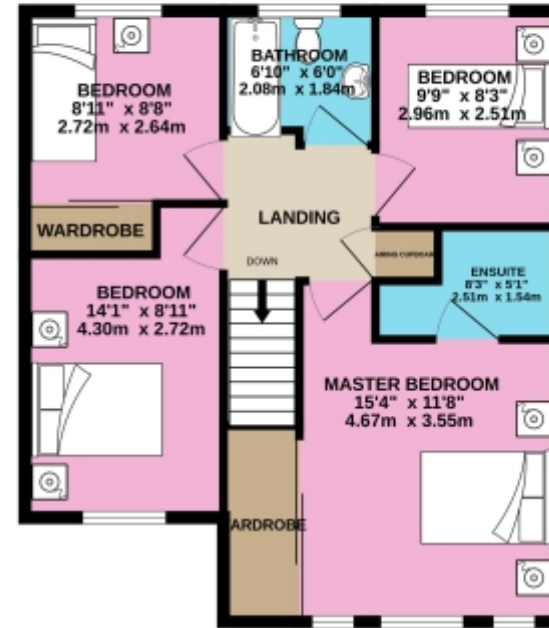
This delightful home enjoys an enviable location near popular local spots such as the much-loved Birds Bakery and the convenient Co-Op store. For those who enjoy the outdoors, Branston Water Park and Branston Golf Club are just a short walk away, offering peaceful retreats for leisure and recreation.

Floorplans

GROUND FLOOR



1ST FLOOR



Floorplans

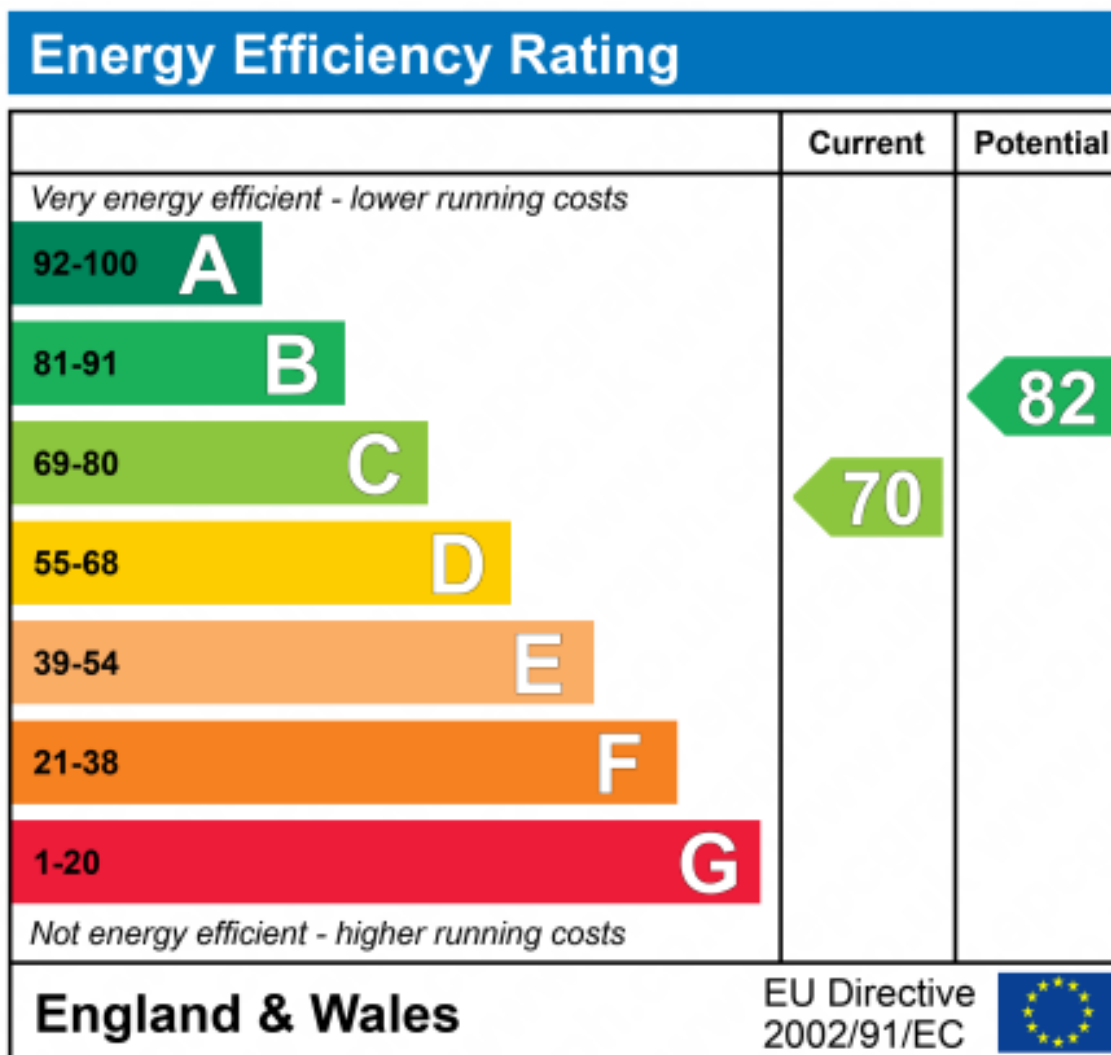
GROUND FLOOR
685 sq.ft. (63.6 sq.m.) approx.



1ST FLOOR
617 sq.ft. (57.3 sq.m.) approx.



For illustrative purposes only. Decorative finishes, fixtures, fittings and furnishings do not represent the current state of the property. Measurements are approximate. Not to scale.
Made with Metropix © 2024





Marketed by EweMove Barton-under-Needwood

01283 247076 (24/7)
barton@ewemove.com

