



Offers In Excess Of £200,000

3 Bedroom Terraced House for sale

92 SHREWSBURY ROAD, STRETTON, BURTON-ON-TRENT



EweMove
SALES AND LETTINGS



Overview

Discover the epitome of modern living in this stunning property, where comfort, style, and convenience converge to create the perfect place to call home. VIEWING ESSENTIAL.



Key Features

- Contemporary Home
- Extended Dining Kitchen
- Enclosed Rear Garden With Patio
- Contemporary Bathroom
- Off Street Parking & Garage
- Close To Excellent Local Amenities
- Popular Location
- CHAIN FREE





Discover the epitome of modern living in this stunning property, where comfort, style, and convenience converge to create the perfect place to call home. VIEWING ESSENTIAL.

The expansive lounge offers a welcoming ambiance, bathed in natural light filtering through the double glazed window. Venture further to discover the heart of the home - an extended living dining kitchen exuding elegance and functionality. Here, a culinary haven awaits, boasting white gloss fronted units, wood effect work surfaces, and a convenient breakfast bar. French doors beckon you to step out onto the patio, seamlessly merging indoor and outdoor living.

Ascend the staircase to the first floor, where a haven of rest awaits. The master bedroom features ample storage within a built-in wardrobe recess. Two additional bedrooms offer versatility, ideal for accommodating guests or crafting a personalized space.

Unwind in the tiled bathroom oasis, offering a retreat for relaxation and rejuvenation.

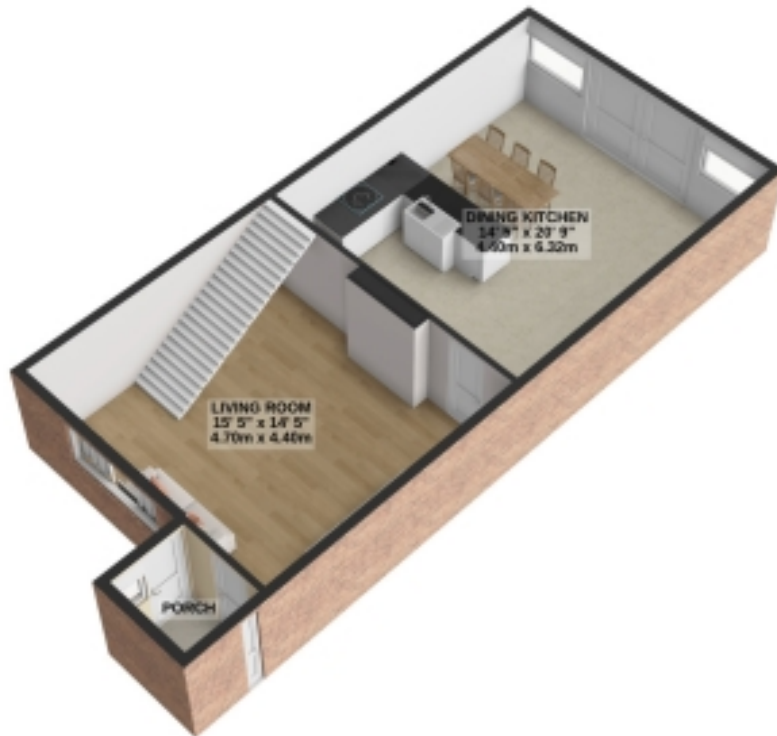
Outside, the property boasts convenience with off street parking, and a single garage, while the enclosed rear garden provides an idyllic space for alfresco dining or basking in the sunshine.



Nestled in the heart of Stretton, this home offers access to a vibrant village community and a plethora of amenities. Enjoy excellent schooling options and effortless connectivity to major transport routes, including the A38, A50, and East Midlands Airport. For additional conveniences and transportation options, Burton's bustling town centre and rail station are just a stone's throw away.

Floorplans

GROUND FLOOR
714 sq.ft. (66.4 sq.m.) approx.



1ST FLOOR
465 sq.ft. (43.2 sq.m.) approx.



For illustrative purposes only. Decorative finishes, fixtures, fittings and furnishings do not represent the current state of the property. Measurements are approximate. Not to scale.
Made with Metropix © 2024

Floorplans

GROUND FLOOR



1ST FLOOR



EPC

The EPC will be available within 28 days or the property may be exempt, please speak to us for more details.



Marketed by EweMove Barton-Under-Needwood & Lichfield

01543 624118 (24/7)
barton@ewemove.com



EweMove
SALES AND LETTINGS