



£300,000

3 Bedroom Detached House for sale

69 Park Road, Barton Under Needwood, Burton-on-Trent



**EweMove**  
SALES AND LETTINGS





## Overview

ENQUIRE VIA OUR EWEMOVE WEBSITE to view this beautiful detached family home. Located in the desirable village of Barton-Under-Needwood benefiting from an extensive range of facilities and amenities including the renowned Barton Marina!



## Key Features

- 3 Bed Detached Family Home
- Conservatory
- Bathroom + Downstairs WC
- Block Paved Driveway
- Private Rear Garden + Garage Store
- Very Popular Location
- John Taylor Catchment
- Excellent Village Amenities









A charming block paved driveway greets you outside, providing ample parking. Enter through the welcoming hallway that guides you into the generously sized living room featuring dual aspect windows and a captivating gas fire.

The well-planned kitchen seamlessly blends practicality with style, complemented by an adjoining conservatory that offers delightful views of the serene rear garden. A convenient WC on the ground floor adds a touch of practicality to the layout.

Venture upstairs to discover three spacious bedrooms, including a master bedroom with fitted wardrobes, all serviced by a contemporary family shower room.

The private rear garden serves as a peaceful outdoor haven, ideal for both relaxation and hosting gatherings in a tranquil setting and a detached garage caters for all your storage needs.



Set in the prime location of Barton under Needwood, the property is within John Taylor catchment and benefits from an excellent range of shops and amenities. Centred around the character high street are traditional village pubs, a cafe, the Co-Op general store and boutique gift shops. It is also a short walk to the highly popular Barton Marina.

The nearby A38 provides links to the Cathedral City of Lichfield, Burton-On-Trent and the larger Cities of Derby and Birmingham

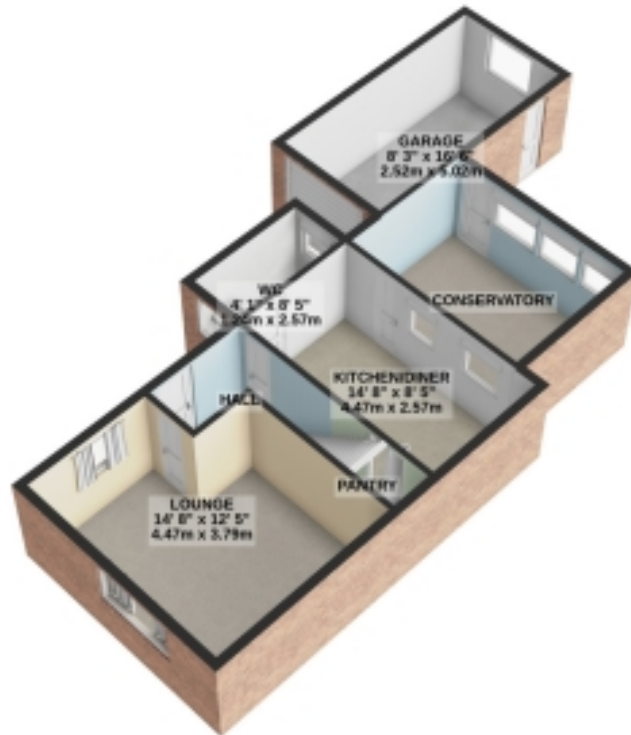




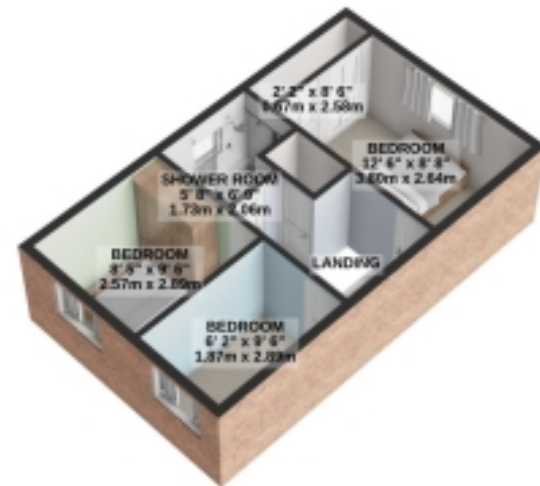


# Floorplans

GROUND FLOOR  
639 sq.ft. (59.3 sq.m.) approx.



1ST FLOOR  
360 sq.ft. (33.4 sq.m.) approx.

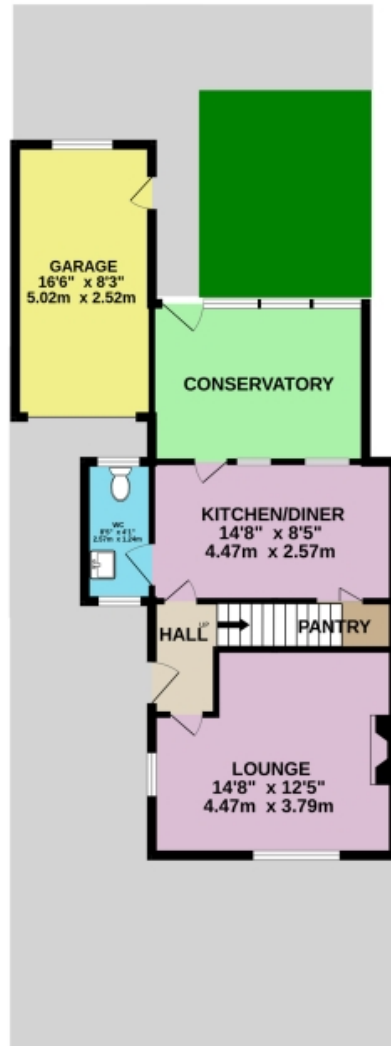


For illustrative purposes only. Decorative finishes, fixtures, fittings and furnishings do not represent the current state of the property. Measurements are approximate. Not to scale.  
Made with Metropix © 2023

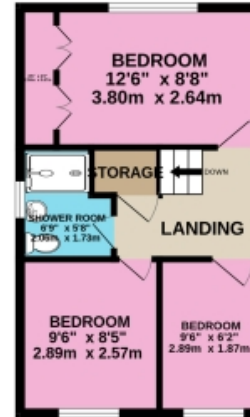


# Floorplans

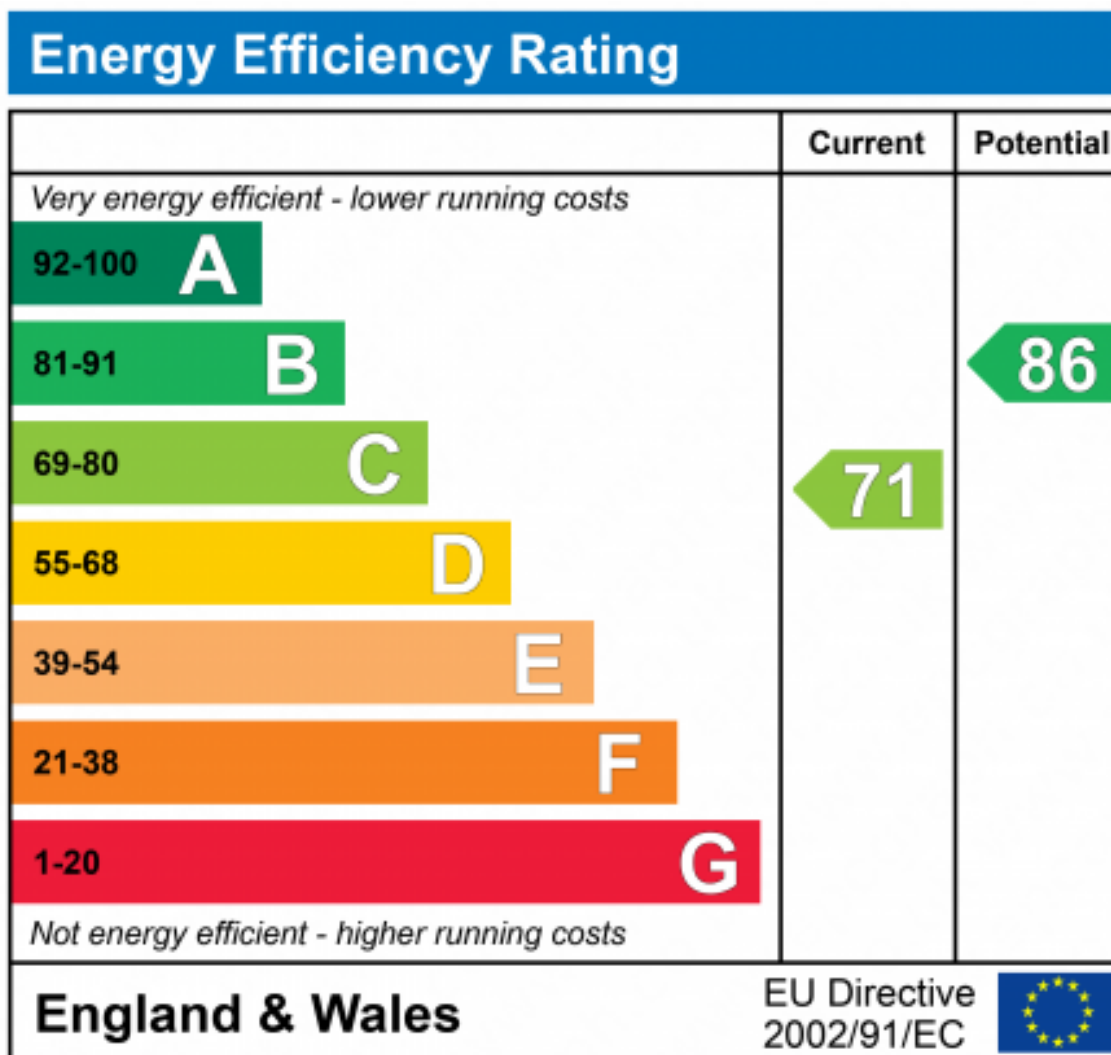
GROUND FLOOR



1ST FLOOR









Marketed by EweMove Barton-Under-Needwood

01543 624118 (24/7)  
barton@ewemove.com

