



£539,000

5 Bedroom Detached House for sale
26 Brierfield Way, Mickleover, Derby



EweMove
SALES AND LETTINGS



Overview

BOOK YOUR VIEWING VIA OUR EWEMOVE WEBSITE OR CALL US 24/7. Nestled in the heart of Mickleover, this spacious extended family home offers a lifestyle of comfort and convenience. With an open aspect to the front and just a leisurely stroll away from the bustling village center, this superb detached property is an idyllic retreat for your family.



Key Features

- Call NOW 24/7 or book instantly online to View
- Littleover Community School Catchment
- Stunning Kitchen/Diner
- Luxury Master Suite
- Converted Garage - Space for Home Office/Gym
- Annex Potential
- Private Low Maintenance Garden
- Excellent Local Amenities
- Close to Excellent Transport Links









This property is deceptively spacious, offering the perfect blend of open-plan living and private spaces. The generous entrance hall welcomes you and leads to a beautiful open-plan kitchen/diner, equipped with a range-style gas cooker and a breakfast bar for family gatherings.

An inner hallway leads to a beautifully decorated dual-aspect living room with French doors opening to a patio area, creating a seamless transition between indoor and outdoor entertaining.

The double garage has been thoughtfully converted into a utility room and a large open room, ideal for a cinema room or gym but can easily be reinstated as a double garage if needed.

Upstairs, you'll find a lavish master bedroom complete with a dressing area and an en-suite bathroom featuring a Jacuzzi-style bath, providing a perfect retreat.



A second bedroom also boasts an en-suite shower room, while three more bedrooms are serviced by a separate shower room, ensuring convenience for the entire family.

The secluded rear garden spans two levels, featuring a spacious paved patio area and an upper level with AstroTurf and mature trees and shrubs. A charming summer house/garden room offers a peaceful escape.

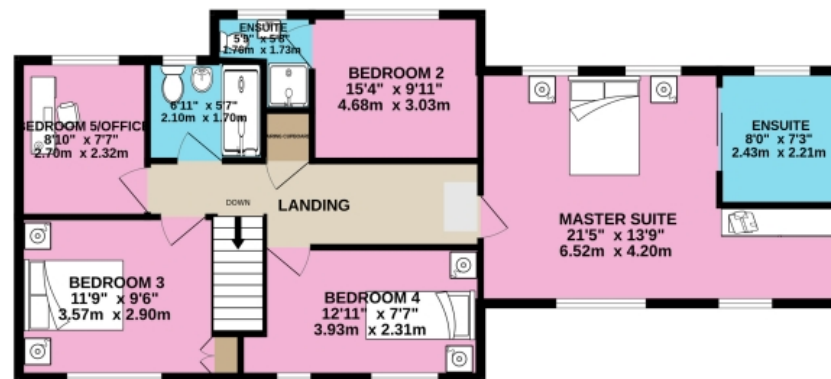
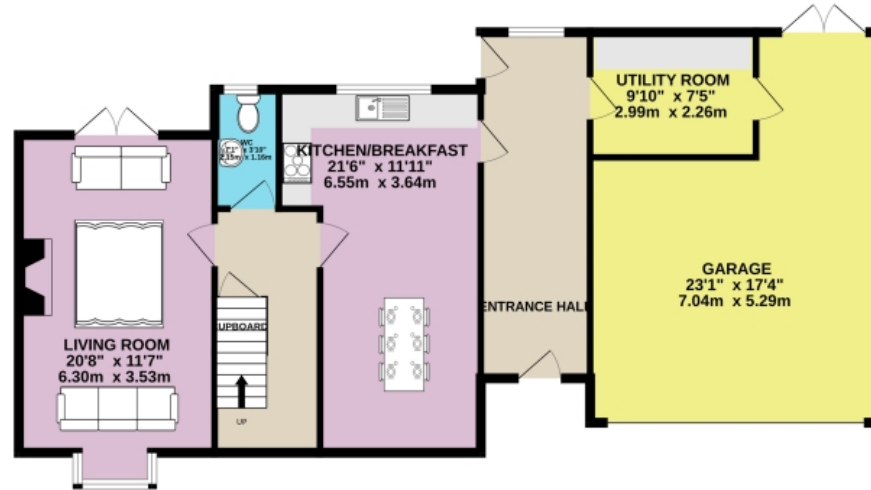
Mickleover is a highly sought-after residential suburb of Derby, located just 3 miles from the city centre. You'll enjoy easy access to a range of amenities, including supermarkets, shops, doctors, and dentists. For leisure enthusiasts, Mickleover Golf Course and nearby countryside walks await, as well as access to the local cycle network.

Excellent transport links are at your doorstep, with quick access to the A38 and A50 trunk roads and the M1 motorway, making commuting a breeze.

Families will appreciate the range of educational options, from primary to secondary schools. Private education is also available at esteemed institutions like Derby High School and Derby Grammar School.

Don't miss this opportunity to make this exceptional family home yours. Contact us today to arrange a viewing.

Floorplans



Floorplans

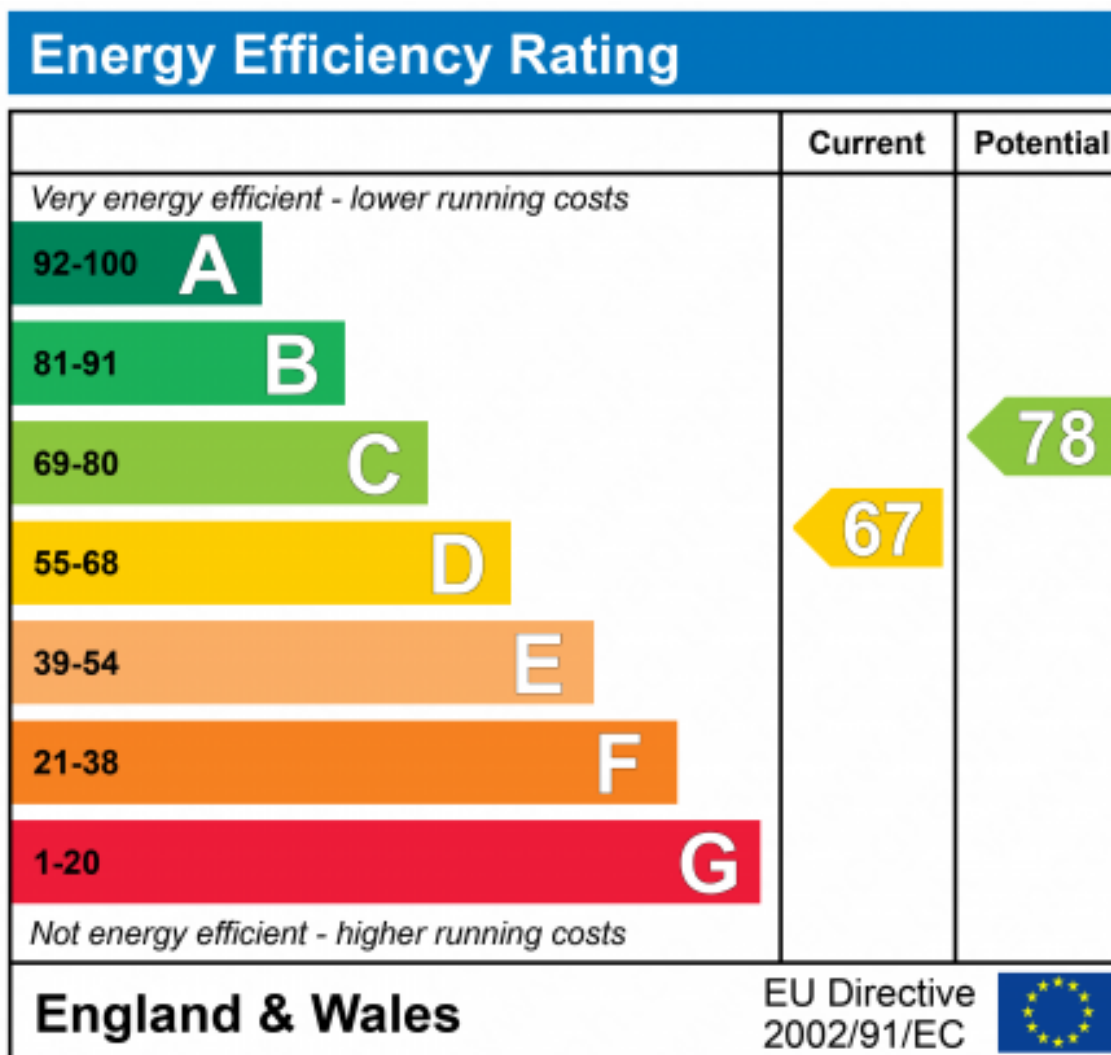
GROUND FLOOR
1091 sq.ft. (101.3 sq.m.) approx.



1ST FLOOR
851 sq.ft. (79.0 sq.m.) approx.



For illustrative purposes only. Decorative finishes, fixtures, fittings and furnishings do not represent the current state of the property. Measurements are approximate. Not to scale.
Made with Metropix © 2023





Marketed by EweMove Barton-Under-Needwood

01543 624118 (24/7)
barton@ewemove.com

