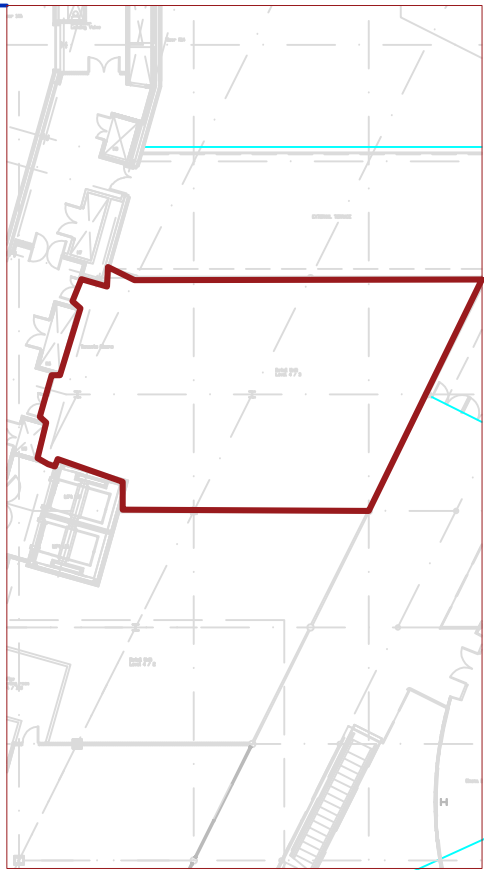


TAKEN FROM THE ORIGINAL AS BUILT,
THE TOTAL UNIT WITHOUT ANY PARTITIONS IS
217M2



BALCONY
205M² APPROX

UNIT 1
(9060-8800)X(13140-13250)
108M² APPROX
COLUMNS EXCLUDED

UNIT 2
11660X11400 MAX
91.3M² APPROX
COLUMNS EXCLUDED


FEMALE TOILET
3.1M² APPROX

MALE TOILET
2.0M² APPROX
TO FRONT OF IPS

STORE
8.8M² APPROX

NOTE:

1. ALL DIMENSIONS ARE NET INTERNAL ROOM DIMENSIONS ONLY AND DO NOT INCLUDE ANY PARTITION WALL CONSTRUCTION.
2. EXISTING PARTITIONS ARE NOT PARALLEL TO THE BUILDING EXTERNAL LINE.
3. INTERNAL DOOR POSITIONS NOT SHOWN.
4. DRAWING PRODUCED FOR ROOM INTERNAL M2 AREAS ONLY.
5. DRAWING NOT TO BE USED FOR CONSTRUCTION PURPOSES.

REVISIONS		
REV	DATE	DESCRIPTION
		
ARCHITECT	CLIENT	
	MILLENNIUM POINT CURZON STREET BIRMINGHAM	
PROJECT TITLE		
MILLENNIUM POINT		
DRAWING TITLE		
AREA SCHEDULE		
STATUS		
TENDER ISSUE		
DRAWN BY	CHECKED	DATE
DS	DS	JULY 2018
DRAWING No.	REV	SCALE
641-200	-	NTS