

HEATHER COTTAGE, 1 BENNET HOUSE, CULROSS KY12 8JH

HARPER & STONE
ESTATE & LETTING AGENTS





HEATHER COTTAGE, 1 BENNET HOUSE

CULROSS, FIFE KY12 8JH

PROPERTY FEATURES

- Beautiful 18th century semi-detached cottage
- Located in the historical Royal Burgh of Culross
- Furnished
- Two Bedrooms
- Well appointed kitchen and bathroom
- Generous lounge with open fire
- All white goods included
- Beautiful historical location
- Available immediately

Harper & Stone are delighted to bring to the rental market Heather Cottage, 1 Bennet House in Culross, positioned in an enviable location just adjacent to Culross Palace in the centre of the burgh.

Entry to the property is through a solid wood front door into a generous reception hall which features a useful storage cupboard.

Immediately right is bedroom two, a twin bedroom which is located at the front of the property. Down the hallway lies bedroom one, which is a good-sized double room. Opposite bedroom one is the family bathroom. The family bathroom comprises a three-piece suite of bath with shower above, WC and pedestal sink. There is also a large cupboard in the hall which houses the boiler and washing machine.

A solid wood staircase leads to the first floor where the living space is located. The well-appointed kitchen/dining area is at the top of the landing.







HEATHER COTTAGE, 1 BENNET HOUSE

Appliances include a four-burner electric hob and oven, fridge freezer, dishwasher and microwave. There is also a dining area with six seater dining table.

Off the kitchen is the lounge, which is a generous room providing an open fire with black stone surround and a window to the front bringing in the natural light.

Early viewing recommended.

Viewings are strictly by appointment only via Harper & Stone.

Landlord Registration: FIF-1708103-25
LARN181005

No pets preferred/No HMO

Council Tax Band D

EER Band D

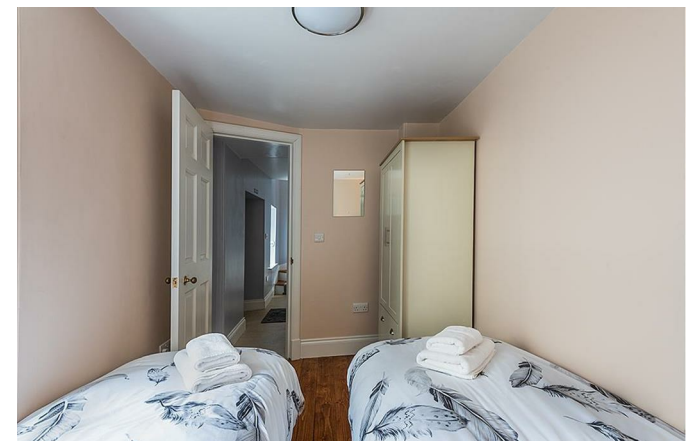
Water: Mains

Sewage: Mains

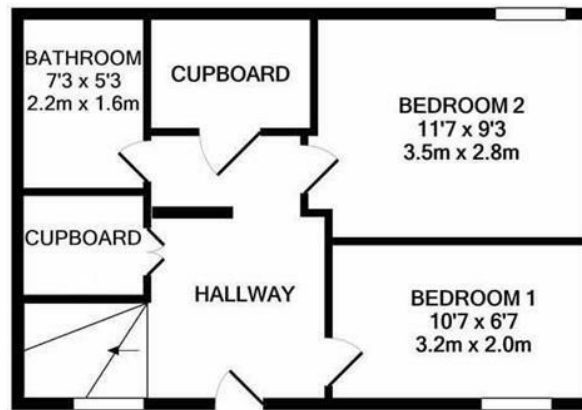
Heating: Mains

What3words

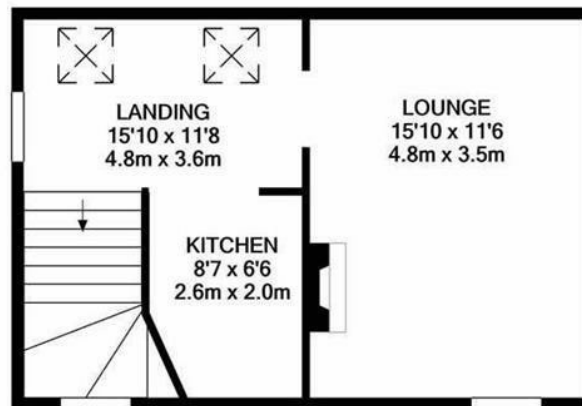
Navigation: [///waltz.meanwhile.lightbulb](https://www.what3words.com/?q=///waltz.meanwhile.lightbulb)







GROUND FLOOR



1ST FLOOR