



4 Beds, Semi-Detached, Freehold, £299,950

Stryd Portref

Three Estate Agents are delighted to present this rare-to-market, four-bedroom, eco-friendly home situated in the sought-after Parc Eirin development on the outskirts of Tonyrefail. Built in 2022 in partnership with Sero Energy and Tirion Homes, this is an exceptional 'A'-rated eco-home.

Features

- ECO HOME
- FOUR BEDROOMS
- SOLAR PANELS AND BATTERY
- GROUND SOURCE HEAT PUMP
- END OF CUL-DE-SAC LOCATION
- EN-SUITE

Three Estate Agents are delighted to present this rare-to-market, four-bedroom, eco-friendly home situated in the sought-after Parc Eirin development on the outskirts of Tonyrefail. Built in 2022 in partnership with Sero Energy and Tirion Homes, this exceptional 'A'-rated eco-home was designed with sustainability in mind, boasting highly efficient central heating and electrical systems.

This modern property features UPVC double glazing, electric central heating with underfloor heating, a ground-source heat pump, and solar panels with a battery storage system. Additionally, it includes an EV charging point, ensuring an environmentally conscious lifestyle. With a low-carbon footprint, this home is a fantastic opportunity for buyers seeking energy efficiency without compromising on style and comfort.

Upon entering, you are welcomed by a spacious entrance hallway with ceramic tiled flooring, providing access to all ground-floor rooms. A convenient WC features a modern vanity unit and continues the ceramic tile flooring for a sleek, cohesive look.

The generously sized lounge is bathed in natural light, thanks to a large front-facing window and French doors opening onto the rear garden. The room benefits from laminate flooring and a stylish feature fireplace, creating a warm and inviting space.

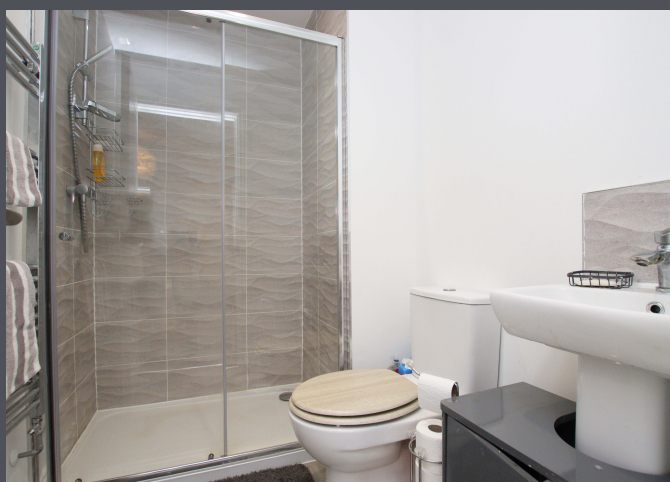
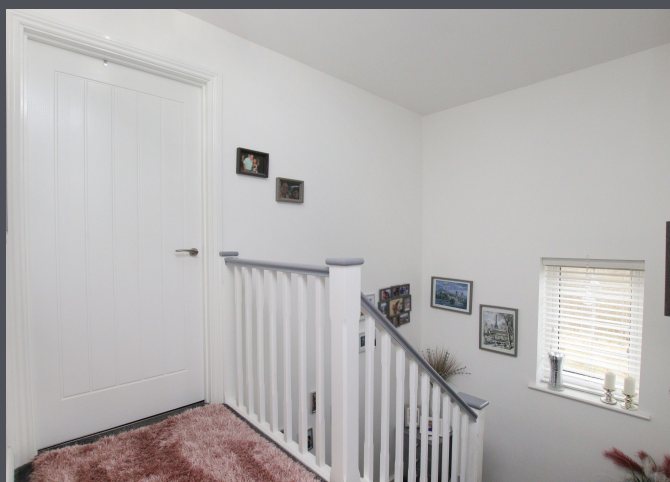
The open-plan kitchen/dining area is both functional and stylish, boasting ceramic tiled flooring, ample dining space, and a breakfast bar. The fully integrated appliances include a fridge freezer, dishwasher, oven, hob, and extractor hood, making it perfect for modern family living.

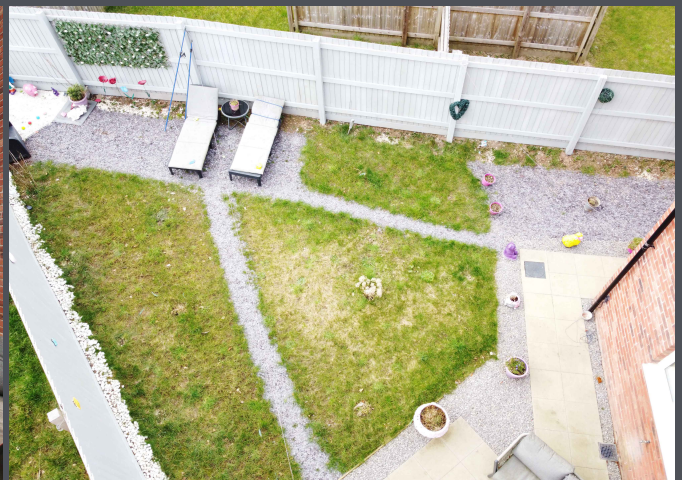
The entire ground floor benefits from underfloor heating, ensuring comfort throughout.

Upstairs, you will find four well-proportioned bedrooms, all featuring carpeted flooring for added warmth and comfort. The master bedroom further benefits from a private en











Score	Energy rating	Current	Potential
92+	A	99 A	103 A
81-91	B		
69-80	C		
55-68	D		
39-54	E		
21-38	F		
1-20	G		

